

---

# **Routt County Community Wildfire Protection Plan**



*September 2010*





## **Process for Revision and Updates**

This CWPP is a living document that should be reviewed annually and updated as needed. The core individuals are encouraged to track projects and record needed revisions in an addendum section of their copy of the CWPP. It is requested that these revisions be submitted to Routt County Office of Emergency Management (OEM) once a year for inclusion in the Routt County master CWPP. Routt County OEM will maintain a single master CWPP in which all revisions and updates will be tracked.

The revised CWPP will be submitted for approval to all signatories approximately every five years or more frequently if needed.



**The following mutually agree with the contents of this Routt County Community Wildfire Protection Program (CWPP):**

---

John Twitchell  
District Forester, Colorado State Forest Service

---

Date

---

Jamie Kingsbury  
District Ranger, Hahn's Peak Ranger District  
Routt Medicine Bow National Forest

---

Date

---

Jack Lewis  
District Ranger, Yampa Ranger District  
Routt Medicine Bow National Forest

---

Date

---

David Blackstun  
Acting Field Manager, Little Snake Field Office  
Bureau of Land Management

---

Date

**The following Routt County Fire Protection Districts mutually agree with the contents of this Routt County Community Wildfire Protection Plan (CWPP):**

---

Bob Reilley  
Fire Chief, North Routt Fire Protection District

---

Date

---

Bryan Rickman  
Fire Chief, West Routt Fire Protection District

---

Date

---

Ron Lindroth  
Fire Chief, Steamboat Fire-Rescue

---

Date

---

Chuck Wisecup  
Fire Chief, Oak Creek Fire Protection District

---

Date

---

Dan Allen  
Fire Chief, Yampa Fire Protection District

---

Date

**This plan has been reviewed by the Routt County Board of County Commissioners and found to meet the criteria for Community Wildfire Protection Plans (CWPPs) set forth by the Colorado State Forest Service.**

---

Nancy J. Stahoviak  
Chairperson, Routt County Board of County Commissioners

---

Date

---

Robert L. Struble  
Director, Routt County Office of Emergency Management

---

Date





## TABLE OF CONTENTS

<b>INTRODUCTION .....</b>	<b>5</b>
<b>OVERVIEW .....</b>	<b>5</b>
<b>CORE TEAM &amp; MEETINGS .....</b>	<b>6</b>
MEETINGS.....	6
<b>BACKGROUND AND HISTORY .....</b>	<b>7</b>
<b>GENERAL FIRE INFORMATION.....</b>	<b>9</b>
<b>FIRE ECOLOGY .....</b>	<b>9</b>
<b>FIRE BEHAVIOR .....</b>	<b>10</b>
<b>VEGETATIVE TYPES.....</b>	<b>10</b>
LODGEPOLE PINE.....	10
SUBALPINE FIR.....	11
ASPEN.....	12
SAGEBRUSH .....	12
GAMBEL OAK.....	13
GRASSLAND–GRASSES/FORBS .....	14
<b>FIRE STATISTICS.....</b>	<b>14</b>
<b>HISTORICAL WILDFIRES .....</b>	<b>16</b>
<b>HOW HAZARDOUS IS ROUTT COUNTY? .....</b>	<b>18</b>
<b>COMMUNITY INFORMATION .....</b>	<b>21</b>
<b>GENERAL INFORMATION .....</b>	<b>21</b>
<b>TOPOGRAPHY/SLOPE .....</b>	<b>22</b>
<b>METEOROLOGY .....</b>	<b>22</b>
<b>HYDROLOGY.....</b>	<b>25</b>
<b>THREATENED AND ENDANGERED SPECIES .....</b>	<b>27</b>
<b>HOMES, BUSINESSES AND ESSENTIAL INFRASTRUCTURE AT RISK .....</b>	<b>27</b>
<b>OTHER COMMUNITY VALUES.....</b>	<b>28</b>
<b>EMERGENCY SERVICES .....</b>	<b>29</b>
NORTH ROUTT FIRE PROTECTION DISTRICT .....	30
STEAMBOAT SPRINGS FIRE-RESCUE .....	30
WEST ROUTT FIRE PROTECTION DISTRICT.....	30
OAK CREEK FIRE PROTECTION DISTRICT .....	31
YAMPA FIRE PROTECTION DISTRICT .....	31
CRAIG RURAL FIRE PROTECTION DISTRICT.....	31
US FOREST SERVICE (HAHN’S PEAK AND YAMPA RANGER DISTRICT).....	31
BLM (LITTLE SNAKE FIELD OFFICE) .....	31
COLORADO STATE FOREST SERVICE .....	31
<b>COMMUNICATIONS .....</b>	<b>32</b>

<b>MITIGATION AREAS &amp; STRATEGIES.....</b>	<b>33</b>
<b>DESIRED FUTURE CONDITIONS AND GOALS .....</b>	<b>33</b>
GOALS.....	33
OBJECTIVES/STRATEGIES .....	33
<b>PLANNING AREA BOUNDARIES .....</b>	<b>34</b>
<b>NORTH ROUTT AREA .....</b>	<b>35</b>
NORTH ROUTT CWPP .....	36
Completed Projects .....	38
OTHER AREAS.....	38
Communities Involved .....	38
<b>STEAMBOAT SPRINGS AREA .....</b>	<b>39</b>
FISH CREEK - SANCTUARY CWPP .....	40
Completed Projects .....	41
BURGESS CREEK CWPP .....	42
Completed Projects .....	42
STEAMBOAT PINES CWPP.....	43
Completed Projects .....	43
OTHER AREAS/COMMUNITIES.....	44
Ski Area.....	44
Fish Creek/Sanctuary Area.....	44
Spring Creek Area .....	44
Strawberry Park to Mad Creek Area.....	44
Howelson Hill/Emerald Mountain Area.....	44
Milner Area (North and South) .....	45
Hwy 131 Corridor .....	45
Lower Elk River Corridor .....	45
Catamount/US40 Area.....	46
Completed Projects .....	47
<b>SOUTH ROUTT .....</b>	<b>49</b>
STAGECOACH AREA CWPP.....	50
Completed Projects .....	53
OTHER AREAS/COMMUNITIES .....	54
Oak Creek Area.....	54
Yampa/Toponos Area .....	54
<b>WEST ROUTT .....</b>	<b>55</b>
<b>FUTURE PROJECTS SUMMARY .....</b>	<b>57</b>
NORTH ROUTT AREA .....	57
Rocky Mountain Youth Corp ARRA Grant .....	57
Willow Creek Project - BLM.....	57
Willow Creek Roadless Project - USFS.....	57
Red Creek Project - BLM .....	57
Columbine and 42 Fuels - USFS.....	58
Routt County Road Hazard Project.....	58
USFS Road Hazard Project.....	58
STEAMBOAT SPRINGS AREA.....	58
City of Steamboat Springs ARRA Grant.....	58
Steamboat Front - USFS.....	58

BLM Emerald Mountain Fuels Project - Proposed.....	59
Routt County Road Hazard Project.....	59
USFS Road Hazard Project.....	59
SOUTH ROUTT AREA .....	59
Stagecoach Fuels Project.....	59
Morrison Creek - USFS .....	60
Routt County Road Hazard Project.....	60
USFS Road Hazard Project.....	60
WEST ROUTT AREA.....	60
Routt County Road Hazard Project.....	60
USFS Road Hazard Project.....	60

**APPENDIX A: MAPS**

**APPENDIX B: MEETING SUMMARIES AND COMMENTS**

**APPENDIX C: OTHER INFORMATION**

**APPENDIX D: ANNUAL PROJECT UPDATES AND ADDENDUMS**

**APPENDIX E: EXISTING CWPPS**



# Introduction

## Overview

Members of the Routt County community, in cooperation with local, state and federal agencies and other interested parties have collaboratively developed this Routt County Community Wildfire Protection Plan (CWPP). This CWPP was created according to the guidelines of *Preparing a Community Wildfire Protection Plan, A Handbook for Wildland-Urban Interface Communities*, March 2004, Communities Committee, National Association of Counties, National Association of State Foresters, Society of American Foresters, Western Governors' Association. The handbook was designed to lead the community through a process that includes eight steps to completion of a CWPP.

Technical assistance was provided by US Forest Service and Routt County Geographic Information Systems (GIS) Department. The *Routt County, Colorado Fire Management Plan* was completed in 2003. All resource materials used are listed in the Appendix.

The Healthy Forest Restoration Act (HFRA) passed by congress on November 21, 2003 directs the federal agencies to collaborate with communities in developing hazardous fuel reduction projects, and in the prioritization of treatment areas as defined by a community's CWPP. It identifies strategies for reducing wildfire fuels while improving forest health, supporting local industry and economy, and improving fire fighting response capabilities.

More recently in 2009, Colorado Senate Bill 09-001 was passed, signed and went into effect. This bill's purpose was to establish CWPPs at the county level, most notably, determining fire hazard areas within the unincorporated portion of the county.

The wildland/urban interface is defined as an area or zone where structures and other human development meets or intermingles with undeveloped wildland or vegetative fuels.<sup>1</sup> An analysis by Jones in 1992 showed that an estimated 29,117 acres of wildland/urban interface exist in Routt County with 103 subdivisions in the affected area. Obviously, many changes including increased growth rate have occurred since this study.

Some homeowners in the planning area are actively practicing the mitigation measures recommended by FIREWISE, a tool designed to protect homes and other property from the impacts of a wildfire. However, other homeowners have taken little or no action to protect their properties from wildland fire. The inconsistent

---

<sup>1</sup> McPherson, Guy R., Dale D. Wade, and Clinton B. Phillips. 1990. *Glossary of Wildland Fire Management Terms Used in the United States*. Society of American Foresters, Washington, D.C. 138 pp.

application of FIREWISE mitigation measures may place their neighbors at increased risk from wildfire.

The purpose of this document is to provide stakeholders and those living in the planning area with an overview of existing wildland fuel conditions, share preliminary findings, and recommend a possible course of potential strategies, projects, and priorities that will reduce the impacts of a wildland fire to the community.

## **Core Team & Meetings**

A core decision making team was assembled and is comprised of the following agencies and individuals:

- Bart Brown and John Twitchell, Colorado State Forest Service
- Mark Cahur, U.S. Forest Service
- Lynn Barclay, Bureau of Land Management
- Bob Struble, Routt County Emergency Management
- Ron Lindroth, Mel Stewart, Deb Funston and Leighton White, Steamboat Springs Fire Rescue
- Bryan Rickman, West Routt Fire Protection District
- Bob Reilley, North Routt Fire Protection District
- Chuck Wisecup, Oak Creek Fire Protection District
- Craig Robinson, City of Steamboat Springs
- Lance Miles & Doug Allen, Steamboat Ski Corporation
- Jason Striker, Routt County Environmental Health
- Scott Havener & Kathy Connell, Steamboat Springs Rural Fire Protection District
- Emy Parmley, Routt County GIS
- Dave McIrvin, Sanctuary HOA

### **Meetings**

An initial meeting of the core team was held on August 20, 2009. The purpose of the meeting was to begin the process of creating a countywide CWPP as a result of Colorado Senate Bill 09-001.

A second meeting of the core group was held on September 15, 2009. The purpose of this meeting was to focus and create a rough list of priorities in the Steamboat Springs and surrounding area.

The first public meeting/open house was held on November 12, 2009. The meeting was advertised on the radio and print media but turnout was extremely low.

A third core group meeting was held on December 9, 2009 to discuss the lack of public involvement as well as the plan moving forward.

A second public meeting was held in conjunction with the annual North Routt Fire Protection District Meeting on June 5, 2010. Twenty-seven (27) people were in attendance. The group was informed of the project and no specific concerns from the public were brought forth.

A fourth core group meeting was held on June 22, 2010. The purpose was to discuss the draft plan and any modifications, etc needed before holding a final public meeting and plan completion.

A fifth and final meeting was held on July 22, 2010. This meeting was combined with the Routt County Wildland Fire MAC Advisory Group meeting. The purpose was to discuss the draft plan and allow public an opportunity for comment before going to the Routt County Commissioners in most likely September for final approval.

**Note:** All meeting notes and summaries are located in the Appendices.

## **Background and History**

This CWPP is a result of Colorado Senate Bill 09-001. However, extensive planning in various communities began back in 2004 following the passage of the Healthy Forest Restoration Act. This has resulted in the creation of several CWPPs throughout Routt County:

- Steamboat Pines CWPP, 2004
- Upper Burgess Creek CWPP, 2004
- Fish Creek – Sanctuary CWPP, 2007
- North Routt CWPP, 2007
- Stagecoach Area CWPP, 2007

These communities have already begun and/or completed projects within their respective boundaries. This county-wide CWPP will incorporate these areas as stand-alone and will be referenced accordingly.

PAGE  
INTENTIONALLY  
LEFT  
BLANK



# General Fire Information

## Fire Ecology

Throughout history wildfire has been a dominant disturbance factor effecting the structure and composition of various ecosystems. Fire alone, however, is not the sole determining factor. Topography and climate play a vital role in the successional stages of these ecosystems. As a result, fire frequency and severity have been critical link in determining which plant species exist and grow on a particular site.

Wildfire events are common and somewhat predictable in their frequency. The frequency varies with forest type. Climate also affects fire frequency. For example, fire frequency in ponderosa pine in Rocky Mountain National Park has been estimated at 30 years<sup>2</sup> whereas the frequency in lodgepole pine has been estimated at 50 years<sup>3</sup>. These numbers might be considered average as some areas have estimated frequencies at 12 to 25 years or even are infrequent as 300-400 years.

Each vegetation type reacts differently to fire. Lodgepole pine, for example, has adapted to fire by requiring fire for regeneration. When lodgepole seeds dense, “dog-hair” stands are formed and often remain until destroyed by another wildfire. While these dense, “dog-hair” stands are very common, a given species composition is dependent on several factors such as current forest conditions, weather, topography and the individual fire intensity.

Many decades of fire suppression throughout Colorado have altered these fire regimes - Routt County is no different. These suppression activities combined with the lack of forest management, the public’s misunderstanding of forestry and fire ecology, and the interdiction of people into this fire ecology have resulted in years of fuel accumulation. Combine this with the increasing number of individual homes and communities in these forested areas, a significant wildfire problem has been created. As years pass without addressing these issues simply increases the potential for disaster.

---

<sup>2</sup> RMNP. 1992. *Fire Management Plan for Rocky Mountain National Park, Colorado*. National Park Service, Rocky Mountain National Park. 140 pp.

<sup>3</sup> Skinner, Thomas and Richard Laven. 1982. *A fire history of the Longs Peak region of Rocky Mountain National Park*. Seventh Conference on Fire and Forest Meteorology.

## Fire Behavior

Wildfire is defined as any fire occurring on wildlands that requires a suppression response. If left unchecked, it is likely these fires will threaten lives and/or property. Wildfire behavior and spread are affected by many factors.

Aspect and slope are two conditions that affect fire intensity and spread. More specifically, aspect affects the fire hazard as a result of climatic differences between slopes. North and east facing slopes are cooler and moister than south and west facing slopes, consequently, fires on west and south slopes are expected to be more severe and move faster. Slope affects fire hazard by affecting rate of fire spread. Fires on steep slopes spread faster than those on moderate or flat slopes because heat rising from fire preheats and dries fuels thus increasing the rate of ignition and fire spread.

Both type and quantity of fuel are important stand considerations. Ground fuels consist of the burnable materials on the forest floor. The amount and continuity of ground fuels will influence fire direction and rate of spread. Ladder fuels are those above the forest floor such as shrubby vegetation or even tree limbs. These fuels provide a pathway for a fire burning on the ground to reach the crowns of trees.

If fire was to reach tree crowns, the amount of canopy closure (extent to which the crowns of the trees are in contact with one another) will help determine fire behavior and intensity resulting in more difficult fire suppression activities. If the trees are in close contact, a fire may burn in the treetops without ever touching the ground.

Finally weather conditions will be the determining factor in fire hazard and suppression activities. A cool, moist day with a high humidity will obviously restrict rate of fire spread in comparison to a hot, dry, windy day. When these factors are combined, all that is needed for a wildfire is an ignition source.

## Vegetative Types

Following are the characteristic vegetation types in Routt County. Fire occurrence intervals are assumed to be 100 to 150 years in the lodgepole pine type and sub-alpine fir types.

### Lodgepole pine

Lodgepole pine forests are a fire dependent species. It's not really a question of if, but rather when these forests will burn. Lodgepole pine is more vulnerable to ground fires than thicker barked species such as ponderosa pine or Douglas-fir. Because its thin bark has poor insulating properties, many trees are killed from ground fires as a result of cambial heating. However, some trees survive, and in general, low-intensity ground fires thin lodgepole pine stands.

Seeds are well protected from heat inside sealed cones. In the Rocky Mountain area lodgepole pines exhibit considerable variability in the percentage of seed cones that are serotinous (cone requires heat to open and disburse seed). However, intense crown fires that ignite the cones can destroy the seeds.

Post-fire recovery tends to be rapid as new stands quickly establish from seed released by serotinous cones. Stocking rates influences seedling growth in fire-generated stands. In overstocked stands, trees may not grow more than 4 feet tall in several decades, but in under-stocked stands lodgepole pine grows fast. Lodgepole pine seedling establishment following fire is influenced by many factors, including pre-fire over-story density, competing vegetation, and probably most important, fire intensity, which in turn affects seedbed condition, opening of serotinous cones, and seed survival.

High-intensity fires generally expose much mineral soil and open serotinous cones. Occasionally, crown fires may be intense enough to ignite cones in the crown. This destroys much of the seed supply resulting in low stocking. Following low-intensity fires, lodgepole pine stocking depends on the amount of mineral soil exposed. Generally if the duff is dry, ground fires will expose mineral soils, but if the duff is moist, less mineral soil is exposed resulting in lowered stocking. Surface fires will not open serotinous cones in the tree crowns, but most lodgepole stands in the Rockies have sufficient open-coned trees to provide seed for restocking.

Lodgepole pine girdled by ground fires, but with no crown scorching, may appear healthy for a couple of years after fire even though they are essentially dead. This is because it often takes more than 2 years for these trees to lose their needles. Trees injured by fire are susceptible to attack by insects. Most commonly, trees infested are those with greater than 80 percent basal girdling. Lodgepole pines that survive ground fires are susceptible to attack in later years by decay fungi that enter through basal wounds. Fire-killed lodgepole pine trees begin to fall 2 to 5 years after dying and most trees will be down in about 15 years.

### **Subalpine fir**

Subalpine fir is easily killed by fire. It is very susceptible to fire because it has thin bark that provides little insulation for the cambium layer. As subalpine fir matures the bark thickens and some self-pruning of lower branches occurs but both spruce and fir tends to retain lower branches that provide ladder fuels. Roots are shallow and susceptible to heat damage during a fire. Fir tends to grow in dense stands that are susceptible to crown fires. Some larger trees may survive light, surface fires but these often die later due to infection by wood-rotting fungi that enter through fire scars. Mortality in mature trees results from crown scorch, girdled stems from cambial heating and damage to shallow root systems.

Wind blown seed from surviving trees in protected pockets is responsible for most stand reestablishment. Reestablishment is more successful following small fires where surviving trees, or trees on the margin of the burn, provide a seed source. On

large, high intensity fires that kill seed trees regeneration of the sub-alpine fir forest is a slow process. Seedling establishment is best on moist surfaces where fire has consumed most, or all of the duff leaving bare mineral soil. Seedlings require some shade and do best on sites with standing dead trees or logs on the ground.

### **Aspen**

Small-diameter quaking aspen is usually top-killed by low-severity surface fire but as dbh increases beyond 6 inches quaking aspen becomes increasingly resistant to fire mortality. Large quaking aspen may survive low-severity surface fire, but usually shows fire damage. Moderate-severity surface fire top-kills most quaking aspen, although large-stemmed trees may survive. Severe fire top-kills quaking aspen of all size classes. Moderate-severity fire does not damage quaking aspen roots insulated by soil. Severe fire may kill roots near the soil surface or damage meristematic tissue on shallow roots so that they cannot sprout. Deeper roots are not damaged by severe fire and retain the ability to sucker.

Mortality does not always occur immediately after fire. Sometimes buds in the crown will survive and leaf out prior to the death of the tree. Even when quaking aspen is not killed outright by fire, the bole may be sufficiently damaged to permit the entrance of wood-rotting fungi. Basal fire scars may also permit entry of borers and other insects, which can further weaken the tree. Quaking aspen on slopes generally show greater damage than do trees on flatter areas. Flames moving uphill often curl up the lee side of trees when fanned by upslope wind, charring the stem further up its bole.

Quaking aspen generally sprouts vigorously after fire. Long-term growth and survival of quaking aspen sprouts depend on a variety of factors including pre-fire carbohydrate levels in roots, sprouting ability of the clone(s), fire severity, and season of fire. Moderate-severity fire generally results in dense sprouting. Fewer sprouts may be produced after severe fire. Since quaking aspen is self-thinning, however, sprouting densities are generally similar several years after moderate and severe fire. A low-severity surface fire may leave standing live trees that locally suppress sprouting, resulting in an uneven-aged stand.

### **Sagebrush**

Most sagebrush species are easily killed by fire. Site productivity affects the ease with which sagebrush will burn. Highly productive sites have greater plant density and more biomass, which, in turn, provide more fuel to carry a fire. Big sagebrush, which comprises a majority of the sagebrush association, has a shorter fire return interval than the low sagebrush types. Among the three major subspecies of big sagebrush, basin big sagebrush is considered intermediate in flammability. Mountain big sagebrush is most flammable, and Wyoming big sagebrush is least flammable. Fire return intervals for mountain big sagebrush are in the 15-40 year range, for basin big sagebrush in the 25-70 year range, and for Wyoming big sagebrush in the 50-100 year range.

All subspecies of big sagebrush re-invade a site by soil-stored or off-site seed. The rate of stand recovery depends on the season of fire, availability of seed, post fire precipitation patterns, and the amount of competition provided by other plant species regenerating after the fire. If a good moisture year occurs soon after the fire, reestablishment can be greatly accelerated. Pattern of burning also greatly influences the rate of post fire reestablishment. Small areas are more rapidly re-invaded from adjacent seed sources; individuals surviving within the fire perimeter may provide much of the seed for re-colonization. Sagebrush seed is not disseminated for great distances; most is shed near the base of the parent plant.

Sagebrush seedlings re-establish readily and grow rapidly on light to moderate intensity burns; reproductive maturity may occur in 3 to 5 years when competition is removed and growth conditions are optimal. Desirable pre-burn density and cover may be achieved in 15 to 20 years under favorable conditions. It may take 30 years or more before desirable pre-burn densities and coverage of big sagebrush subspecies are regained on high intensity, large burns or where herbaceous competition impedes sagebrush reestablishment.

Currently, many sagebrush communities are at or beyond the age (structure and composition) when fire would normally have intervened to move these communities back to an earlier serial stage. Lack of fire may be due in part to fire suppression efforts, lack of fine fuels related to grazing issues, or many other factors that influence the susceptibility of a vegetation community to fire. Continued exclusion of fire from these communities has and will continue to allow succession of sagebrush to advance to a point where native herbaceous plant species (fine fuels) may be limited where fuels are currently not limited. Many of these sagebrush communities in the lodgepole pine zone have seen an increased abundance of lodgepole pine trees, which replace sagebrush and more importantly, the herbaceous species needed to carry fire. These herbaceous species are critical to maintenance of the natural fire regime for these communities.

Decreased herbaceous species in the sagebrush community extends the fire return interval outside the norm until extreme conditions are necessary for a fire or other disturbance to occur. At that point, the site is susceptible to cheat grass or other non-native plant invasion and the fire return interval may become much shorter than normal. A non-desirable sagebrush community (lacking or devoid of native herbaceous vegetation) may increase the chance for cheat grass invasion following a disturbance, which in turn would be perpetuated by more frequent fire events.

### **Gambel oak**

Gambel oak is a fire-adapted species. It responds to fire by vegetative sprouting. Fire in Gambel oak may promote a brief grass-forb stage depending upon fire intensity and frequency. In most situations, Gambel oak sprouts vigorously the first growing season following fire. If successive fires occur at this stage, Gambel oak may be

reduced to a grass-forb stage. In the absence of fire, Gambel oak reaches maturity in 60- 80 years.

Gambel oak appears to be a relatively benign fire type. Its appearance is deceptive. When live fuel moistures get below 130% Gambel oak becomes very volatile. Unexpectedly hot, fast spreading fires in Gambel oak have killed over nineteen firefighters in Colorado over the last two decades.

### **Grassland–Grasses/Forbs**

Fire effects depend on the growth habit and phenology of affected plants, as well as season of burn, fire intensity, and burn severity. Fires usually top kill and consume vegetation to ground level. Rhizomatous grass and forb species are frequently favored by fire, as fire may stimulate the initiation of new shoots. Rhizomatous species usually have coarse stems and lesser amounts of leafy material, which results in rapid combustion, and little downward transfer of heat to below ground plant parts. Heat transferred downward may adversely impact meristematic growth tissues and injure the affected plant. Bunchgrass crowns characterized by coarse stems and leaves are generally considered to be less prone to prolonged burning than fine-leaved bunchgrasses.

Burns occurring in the spring, an unlikely scenario given the rare incidence of natural ignitions at that time of the year, after new growth is initiated can severely injure most grass and forb species. Likewise, burns when grasses and forbs are in the fruiting stage (generally in early to mid-summer) when root carbohydrate reserves are low can result in significant damage.

Grasses and forbs spread rapidly via surviving rhizomes following a burn. Non-rhizomatous plants establish relatively rapidly from seed banks in the soil or from off-site seed sources. Composition and production of most grass and forb species usually exceed (under optimal conditions) pre-burn levels within two growing seasons following a burn.

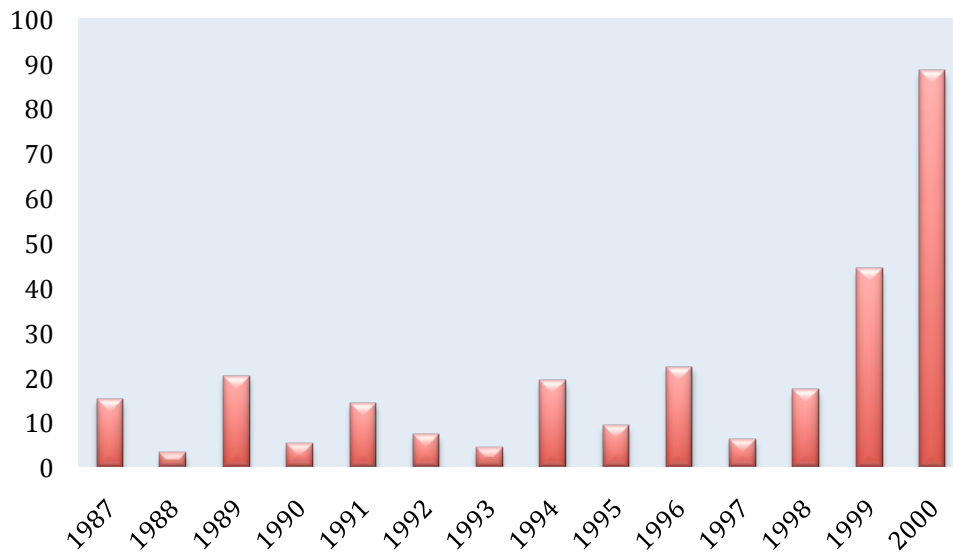
### **Fire Statistics**

Historically, 85.25 percent of fires on state and private lands in Colorado are human caused<sup>4</sup>. However, the data in Routt County shows 79 percent are human caused (13 year average).

---

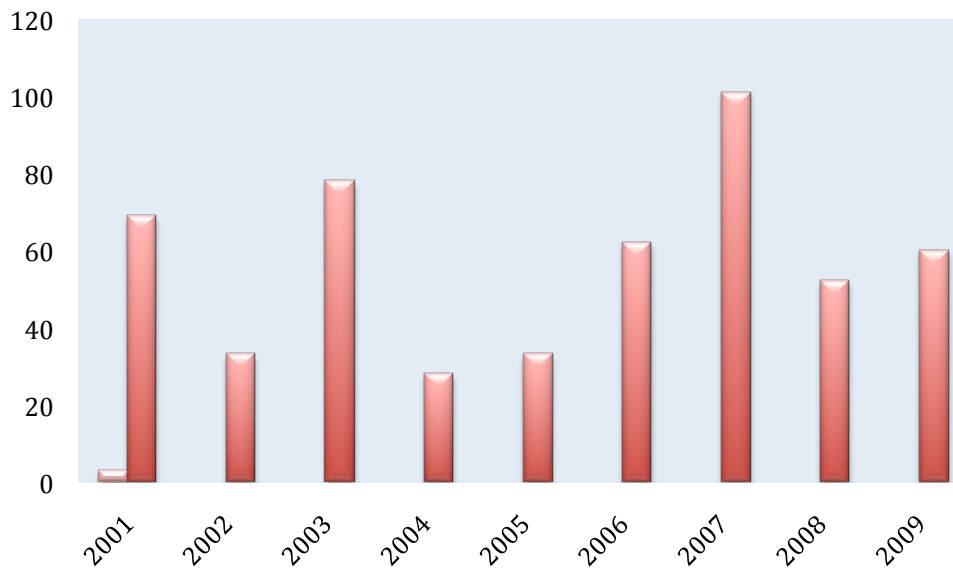
<sup>4</sup> CSFS. 1995. *State of Colorado – Wildfire Hazard Mitigation Plan*. Annex I. Colorado State Forest Service. Ft. Collins, Colorado.

*Wildfires on State and Private Land in Routt County<sup>5</sup>*



A ten year average shows that 12 wildfires burn 264 acres each year in Routt County. Records kept by the Routt-Medicine Bow National Forest show that from 1991-2000 the forest averaged 15.3 fires involving 103.1 acres.

*Wildfires on State and Private Land in NW Colorado<sup>6</sup>*



More recent data from Craig Interagency Dispatch Center shows an annual average of 57 fires for 3,641 acres in their NW Colorado jurisdiction. Of those fires on state and private land, 28% were human caused.

<sup>5</sup> Data compiled from FD records

<sup>6</sup> Craig Interagency Dispatch Center Year End Reports, 2001-2009

## Historical Wildfires

Disastrous wildfires are not uncommon throughout Colorado. The most historic example of this wildland urban interface is the Hayman Fire (largest in Colorado's history) southwest of Denver in 2002. It was a human caused fire that consumed 137,760 acres, destroyed 600 structures, and cost \$39,000,000. Other notable fires in Colorado's recent history include: the Hi Meadow Fire in 2000 involving 10,970 acres and destroying 51 homes; the Buffalo Creek Fire which destroyed 12 homes; the Black Tiger Fire in 1989 which destroyed 44 homes and threatened at least 100 more homes in Boulder County.

The majority of these fires have been along Colorado's Front Range and, fortunately, Routt County has not experienced a major residential catastrophe such as those along the Front Range. This can be attributed to the demographics and population centers in the state. However, Routt County as well as the remainder of the western slope is certainly not immune from large wildfire incidents. In 2002 the Mt Zirkel Complex (approx. 30,000 acres), Green Creek Fire (4,400 acres) and Lost Lakes Fire (5,536 acres) were in the Routt National Forest with several others in neighboring counties/forests. As so many fire ecologists, firefighters, and others have said, the question is no longer **if** a major wildfire is likely to occur, but **when** and **where** the fire will burn.



*Burn Ridge Fire, 2002*





*Big Fish fire, 2002*



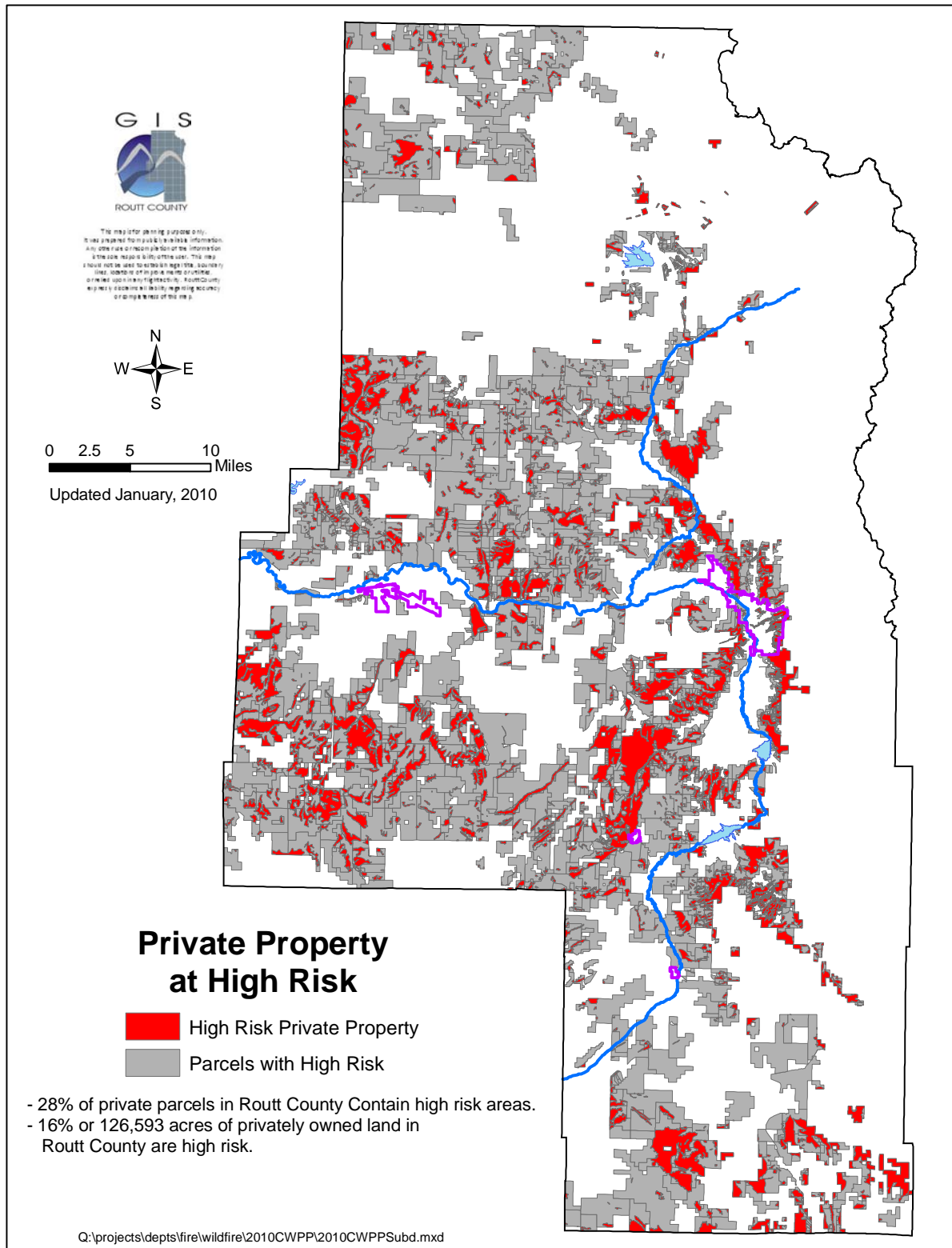
*Mt Zikel Complex photos, 2002*

## **How Hazardous is Routt County?**

According to Jones report, Routt County is a hazardous county with respect to wildland/urban interface. It rates as high; only 11 counties rate higher the majority of which are along the Front Range.

An estimated 28% of private parcels in Routt County are in high hazard areas. This estimate is strictly based upon the fuel hazard and does not consider ignition potential, as there is insufficient data. As growth continues, ignition potential will certainly increase.

*High Fire Hazard Interface with Private Land.*

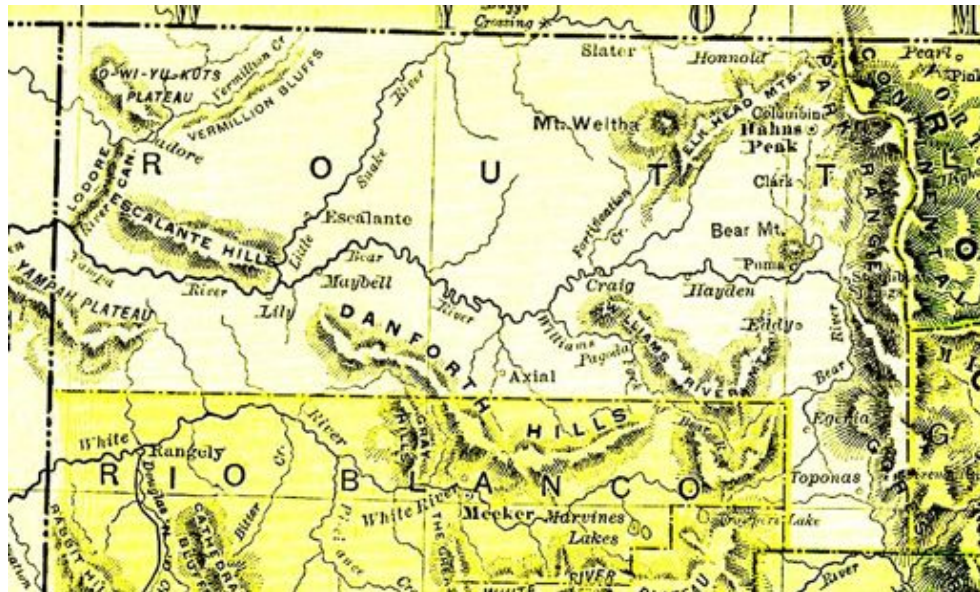


PAGE  
INTENTIONALLY  
LEFT  
BLANK

# Community Information

## General Information

Located in the northwest portion of Colorado, Routt County was established in 1877 when it was created out of the western portion of Grand County. It was named for John Long Routt, the first governor of Colorado. In 1911 the western portion was split off to form Moffat County.



*Routt County in 1877*

Routt County encompasses 2,368 square miles (1,515,815 acres) of which 766,185 acres are private ownership, 683,113 are managed by federal government and 66,610 acres are state and local government ownership. The Routt and White River National Forests and Flat Top and Mt Zirkel Wilderness areas are located within Routt County. Colorado State Parks has four parks in Routt County: Stagecoach State Park; Steamboat Lake State Park; Pearl Lake State Park; Yampa River State Park.

Prior to the settlers arrival in the Yampa Valley, the Utes found the area ideal for summer hunting. Trappers began to come to the valley in the early 1800s. They called the area The Big Bend because the Yampa River makes its turn toward the west at this point in the valley. The name Steamboat Springs is thought to have originated around this time when French trappers thought they heard the chugging sound of a steamboat's steam engine. The sound turned out to be a natural mineral spring.<sup>7</sup>

---

<sup>7</sup> Source: [yampavalley.info](http://yampavalley.info)

Ranching was the primary industry of the valley and in the late 1800s a mining boom was underway in the area of Hahns Peak. Today, cow and sheep ranching, hay and wheat farming, and coal mining are county industries with tourism as the major economic factor in the area.<sup>8</sup>

There is little doubt that prior to settlement wildland fire played a significant role in creation and perpetuation of native plant communities. The influence of wildland fire was disrupted with the arrival of early settlers into the area. The consequences of burning by the Utes, logging, grazing, and fire suppression have lead to a more or less even-aged stands of mixed conifer, an increased accumulation of forest fuels on the ground, an increase in tree density in forested areas, and an increase of trees, brush, and other species in prairie areas.

The Town of Steamboat Springs, Hayden, Hahn's Peak, Oak Creek and Yampa are the incorporated communities within the planning area.

## **Topography/Slope**

The topography of the planning area is widely varied. Generally, the terrain in the lower elevations/valleys is relatively flat but rolling, while the mountains in the northern and eastern portion is broken. Elevations range from approximately 6,200 to just over 12,000 feet. While slope is not a factor on the plains, except in drainages there is enough topographic relief that all aspects and degrees of slope are present. Routt County is on the western slope meaning it is located on the western side of the Continental Divide.

## **Meteorology**

The planning area rises from the plains/valleys to the summit of the Park Range and Elk Mountains. As a result, there are definite variations in the weather. The Wet Mountains can receive heavy snowfall and spawn severe storms that can produce lightning, hail, and lead to flash flooding.

Although floods make up about 75 percent of the state's natural disasters, experts say that Colorado is also vulnerable to a severe, long-term drought that also could have devastating impacts on people, property and the economy.<sup>9</sup>

Droughts are a normal part of the climate for all regions of the United States, but are of particular concern to the arid West where any interruption of the region's already

---

<sup>8</sup> Ibid

<sup>9</sup> Office of the Governor. 1999. Public Invited To Governor's Flood and Drought Preparedness Conference. Press Release. Available on the internet at [www.state.co.us/owenspress/11-10-99a.htm](http://www.state.co.us/owenspress/11-10-99a.htm)

limited water supplies over extended periods of time can produce significant impacts.<sup>10</sup>

Western Colorado generalizations: At the summits of mountains, temperatures are low, averaging less than 32° F over the year. Snow-covered mountain peaks and valleys often have very cold nighttime temperatures in winter, when skies are clear and the air is still – occasionally to 50° F below zero. Summer in the mountains is a cool and refreshing season. At typical mountain stations the average July temperature is in the neighborhood of 60° F. The highest temperatures are usually in the seventies and eighties, but may reach 90° F to 95° F. Above 7,000 feet, the nights are quite cool throughout the summer, while bright sunshine makes the days comfortably warm.<sup>11</sup>

Based on 97 years of records (1908-2005)<sup>12</sup>, the annual average temperature for the Steamboat Springs area is 38.9° F. The average temperature range during that period of time varies from a high of 82.4° F in July to an average minimum temperature of 1.1° F in January. Average annual precipitation is 23.97 inches. The Steamboat Springs area receives 165.9 inches of snow a year, on average. The graphs below help illustrate these trends.

---

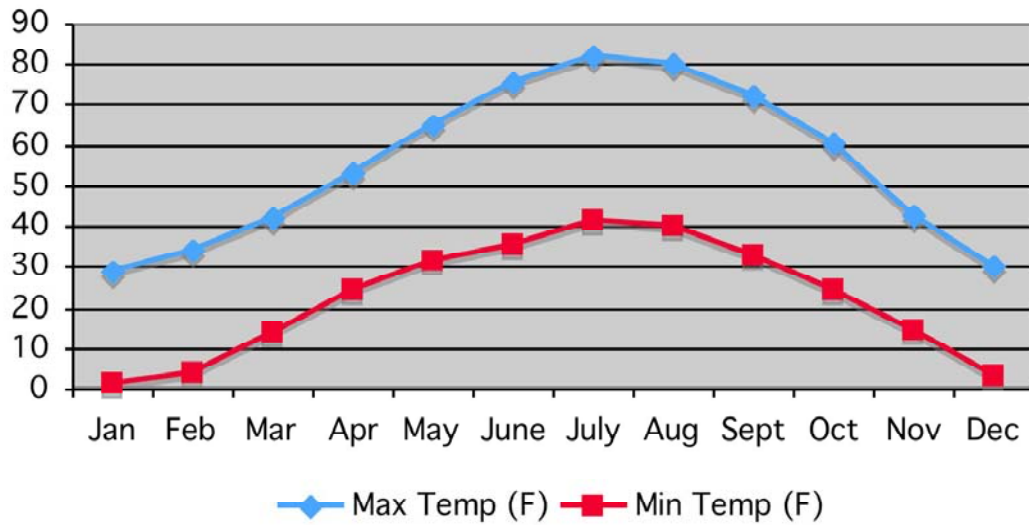
<sup>10</sup> Ibid

<sup>11</sup> Western Regional Climate Center. Available on the internet at:  
<http://www.wrcc.dri.edu/narratives/COLORADO.htm>

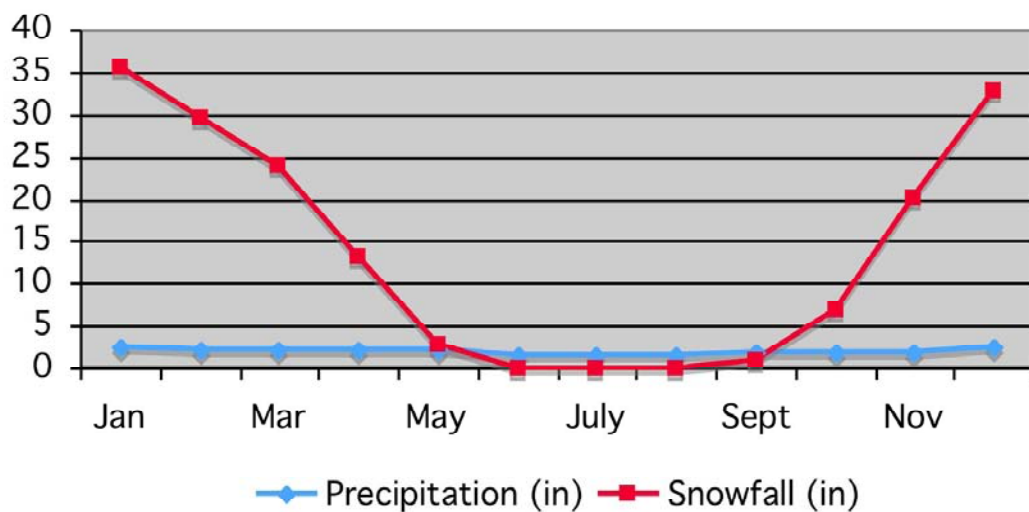
<sup>12</sup> Western Regional Climate Center.



Monthly Avg. Temperatures  
*Steamboat Springs 1908-2005*



Monthly Avg. Precipitation & Snowfall  
*Steamboat Springs 1908-2005*





## Hydrology

Several municipal watersheds are located within the planning area provide surface drinking water for their respective communities (Table 1). These watersheds are extremely important to the communities that depend on them and thus any large-scale damage to the watershed would have a direct impact on the respective community.

**Table 1.** Community Water Supplies – Routt County

System	Area Served	Source
Mt Werner Water Dist	Steamboat Springs	Surface & Well
City of Steamboat Springs	Steamboat Springs	Surface & Well
Steamboat II	Steamboat II	Surface & Well
Town of Oak Creek	Oak Creek	Surface
Morrison Creek Metro District	Stagecoach Area	Surface & Well
Town of Yampa	Yampa	Surface
Catamount Metro Dist	Catamount Development	Surface
Town of Hayden	Hayden	Surface
Alpine Mountain Ranch	Alpine Mt Ranch	
Dakota Ridge	Dakota Ridge Subd.	
Agate Creek	Agate Creek Subd.	
Marabou Ranch	Marabou Ranch	
Steamboat Lake Water and Sanitation District		Surface & Well
Upper Yampa Water Conservancy District		Surface
Phippsburg		Surface & Well

Large fires in the Front Range, especially the Hayman Fire (2002) and Buffalo Creek Fire (1996) have demonstrated the importance of protecting watersheds. For example, a flash flood that occurred shortly after the Buffalo Creek Fire caused a great deal of damage to local infrastructure, greatly impacted a water storage facility operated by the Denver Water Board, and most importantly took two lives.

Heavy rains over the Mason Gulch Fire (2005) area in June and July of 2006 resulted in significant runoff in North Creek and Red Creek which damaged access roads and deposited extensive debris downstream from the burn. As indicated previously, several water systems in the planning area rely on surface water to provide the majority of the drinking water to the local community. The protection of these water sources from the impacts of a high-intensity wildland fire is extremely important.

Many dams throughout Routt County could be adversely affected by a large wildfire event. The domino effect of such event could be damage or failure of the structure itself; damage to the surrounding community; and/or loss of life. Those dams of significant or high hazard potential are listed in Table 2. In addition to these listed there are 45 low hazard dams in Routt County and 12 low hazard dams in Garfield County that directly affect Routt County.

**Table 2.** Hazard Dams Affecting Routt County.

<b>Dam</b>	<b>River</b>	<b>Hazard Class</b>
Hahns Peak Lake Dam	Willow Creek	High (Hazard 1)
YamColo Reservoir (Garfield County)	Bear River	High
Stagecoach	Yampa River	High
Catamount	Yampa River	High
Fish Creek Reservoir	Fish Creek	High
Long Lake Dam	S. Fork Fish Creek	High
Lester Creek Dam/Pearl Lake	Lester Creek	High
Gardner Park	Gardner Creek	Significant (Hazard 2)
Stillwater #1 Dam (Garfield County)	Bear River Tributary to the Yampa River	High
Grimes-Brooks Reservoir	Red Dirt Creek	High
Willow Creek Dam/Steamboat Lake	Willow Creek	High
Sheriff Dam	Trout Creek	High
Chapman Dam	Little Oak Creek	Significant
Allen Basin Dam	Middle Hunt Creek	Significant
Lake Creek Dam	Wheeler Lake Creek	Significant

## Threatened and Endangered Species

The planning area is within the historic range of the bald eagle, *Haliaeetus leucocephalus*, which is frequently spotted along all portions of the Yampa River Basin. Other threatened and endangered species are listed below.

**Table 3.** USF&WS Threatened and Endangered Species – Routt County

SPECIES*	STATUS
Bald eagle, <i>Haliaeetus leucocephalus</i>	Listed Endangered
Bonytail chub, <i>Gila elegans</i>	Listed Endangered
Canada lynx, <i>Lynx canadensis</i>	Listed Threatened
Colorado pikeminnow, <i>Ptychocheilus lucius</i>	Listed Endangered
Greater Sage-Grouse, <i>Centrocercus urophasianus</i>	Candidate for Listing
Humpback chub, <i>Gila cypha</i>	Listed Endangered
Razorback sucker, <i>Xyrauchen texanus</i>	Listed Endangered

\* 2010 data

The habitat needs for these and other species will be considered when finalizing individual projects.

## Homes, Businesses and Essential Infrastructure at Risk

Ranches, small groupings of homes, and freestanding homes are present throughout Routt County. Widely scattered homes located on large 35+ acre lots are prevalent in subdivisions, especially in northern and central portions of the planning area. The total population for the planning area, according to the 2000 census is 19,690. An estimate in 2008 shows the population to have increased 16.7% to 22,980. Of that, 1,634 live in Hayden, 9,815 live in Steamboat Springs, 849 live in Oak Creek and 443 live in Yampa<sup>13</sup>. The median home value within the planning area is \$268,500<sup>14</sup>.

A variety of businesses, some of which cater to area visitors because of tourism, as well as churches, and other local businesses provide area services are located in Steamboat Springs, Hayden, Oak Creek Yampa and Clark/Hahns Peak. All municipalities are served by their own water company; most rely on surface water (Table 1). Electrical power, telephone service, and cable and internet service are provided primarily by local companies or regional companies; i.e., Yampa Valley Electric Association, Qwest.

<sup>13</sup> 2000 Census

<sup>14</sup> Ibid.

Yampa Valley Regional Airport provides airport service to all of NW Colorado with flights from all over the country from multiple carriers. The Steamboat Springs Airport is a small FBO airport serving mostly private individuals.

Three school districts, Hayden, Steamboat Springs and South Routt are within the planning area. Some private schools and community/charter schools are also in Routt County.

The nearest medical facilities are located in Steamboat Springs. Several communication towers are located throughout Routt County along with local government facilities (including fire and law enforcement). The Routt County Critical Infrastructure Map located in Appendix A illustrates these concerns.

### Other Community Values

Recreational and day use activities (picnicking, fishing, hunting, hiking, mountain biking, skiing, etc.) are important to the area's economy. Key recreational areas include the Steamboat Ski Area, Howleson Hill Ski Area, Perry Mansfield Camp, recreation and wilderness areas in the Routt National Forest and the four state parks that are part of CO State Parks. Many visitors to the area enjoy the views along The Flat Tops Trail Scenic Byway from Yampa to Meeker.

Because of the vast history and heritage of the Yampa Valley, several properties have been listed in the National Register of Historic Places.

**Table 4.** National Register of Historic Places – Routt County

Name	Location
Bell Mercantile	Oak Creek
Christian Science Society Building	Steamboat Springs
Columbine	Clark
Crawford House	Steamboat Springs
First National Bank Building	Steamboat Springs
Foidel Canyon School	Oak Creek
Hahns Peak Schoolhouse	Hahns Peak
Hayden Depot	Hayden
Hayden Rooming House	Hayden
Maxwell Building	Steamboat Springs
Mesa Schoolhouse	Steamboat Springs
Perry-Mansfield School of Theatre and Dance	Steamboat Springs
Rock Creek Stage Station	Toponas
Routt County National Bank Building	Steamboat Springs
Steamboat Laundry Building	Steamboat Springs
Steamboat Springs Depot	Steamboat Springs
Summit Creek Ranger Station	Columbine

Many ranches in Routt County, while not listed on a register, are historic and important to the community. A few are recognized as Centennial Farms for being owned and operated by the same family for over 100 years.

**Table 5.** Centennial Farms – Routt County

<b>Name</b>	<b>Location</b>	<b>Established</b>
Summer Ranch	Steamboat Springs	1889
Soash Ranch	Steamboat Springs	1904
Zehner Ranch	Hayden	1901
Crags Ranch	Hayden	1895
Hitchens Overlook Ranch	Milner	1886
Sullivan Ranch	Craig	1884

The existing CWPPs incorporated into this county-wide plan, may include additional historic areas. Please reference those plans for more information.

## **Emergency Services**

Emergency and wildland fire suppression services in Routt County are provided by eight local, state and federal agencies:

- North Routt Fire Protection District
- Steamboat Springs Fire Rescue
- West Routt Fire Protection District
- Oak Creek Fire Protection District
- Yampa Fire Protection District
- Craig Rural Fire Protection District
- US Forest Service (Hahns Peak and Yampa RD)
- BLM (Little Snake Field Office)
- CSFS

Significantly, for over a decade the majority of these departments have routinely provided each other support during wildland fire suppression activities in the form of mutual aid – both within and outside of the wildland-urban interface. The overarching goal has been the timely suppression of wildland fire in order to protect life and property. As part of the Routt County Fire Plan, the local Fire Protection Districts in Routt County adopted standardized wildland fire fighting training

(beginning with basics taught in S-130/190), to acquire and use wildland fire personal protective equipment, to acquire appropriate wildland fire apparatus (when afforded the opportunity), and to use the Incident Command System in an ever increasing fashion.

All five Fire Protection Districts provide structural and wildland fire protection within their districts as well as mutual aid to surrounding areas. The USDA Forest Service has responsibility for wildland fire suppression on Forest Service lands within the Routt National Forest, and likewise the BLM with suppression on BLM Lands.

The resources of and relationship between the wildland fire response agencies in Routt County are reviewed and updated annually in the Annual Fire Operations Plan (AOP). The Routt County Department of Emergency Management has facilitated the writing of the AOP. The Routt County Sheriff, Routt County Board of County Commissioners, Colorado State Forest Service, U.S. Forest Service and U.S. Bureau of Land Management formally sign it.

### **North Routt Fire Protection District**

The North Routt Fire Protection District is the northern-most local response agency in the planning area. The department was formed in 1974 as the Clark Fire Department and has a total response area of 410 square miles. The department is fully voluntary except for a paid Fire Chief. North Routt Fire Protection operates out of two fire stations with a staff of 20 volunteer firefighters. Their equipment includes 2 type-1 engines, 2 water tenders, 2 ambulances, 1 type-3 engine, 1 type-4 engine, 1 squad, 1 all-terrain gator and associated equipment.

### **Steamboat Springs Fire-Rescue**

The City of Steamboat Springs along with the Steamboat Springs Rural Fire Protection District comprises Steamboat Springs Fire-Rescue. It is the central-most local response agency in the planning area. The original Steamboat Springs Fire Department was formed in 1898 and has evolved from a voluntary organization to a combination department. It has a total response area of 384 square miles. Steamboat Fire Rescue operates out of three stations (2 manned, 1 unmanned) with a total staff of 26 career officers and firefighters and an additional 12 seasonal and volunteer firefighters. Eight personnel staff a 4-person engine and two, two person ambulances that provide a dual role of firefighter/medics. Their equipment includes: 3 type-1 engines; 2 aerials; 2 type-6 engines; 2 tactical tenders; 4 ambulances and other associated equipment.

### **West Routt Fire Protection District**

The West Routt Fire Protection District is the western-most local response agency in the planning area. The department was formed in 1963 and has a total response area of 197 square miles. The department uses paid on call staff except for a paid Fire Chief, Asst Chief and part-time Captains. West Routt Fire Protection operates out of one fire station with a staff of 22 paid per call firefighters. Their equipment includes 3 class A engines, 1 type 6 engine, 2 type 2 tenders and associated equipment.

**Oak Creek Fire Protection District**

The Oak Creek Fire Protection District directly covers approximately 239 square miles surrounding the Town of Oak Creek. The District provides structural and wild land fire suppression, technical rescue including motor vehicle accidents, water rescue, and ALS and BLS Emergency Medical transport. Oak Creek operates out of three stations, 2 in Oak Creek and a newly constructed station in Stagecoach. Their apparatus fleet consists of 2 engines (Type-1 & Type-2), 2 brush trucks (Type-3 & Type-6), 1 water tender, 2 rescue squads, 2 ambulances, and 2 Command vehicles. Staffing is currently 4 full time staff and 12 Volunteer/Reserves.

**Yampa Fire Protection District**

The Yampa Fire Protection District is the southern-most local response agency in the planning area. The department was formed in 1981 and has a total response area of 356 square miles. The department is 100% voluntary. Yampa Fire Protection operates out of two fire stations (Yampa and Phippsburg) with a staff of 15 volunteer firefighters and EMTs. Their equipment includes: 3 type-1 engines; 1 type-6 engine; 2 tenders; 1 rescue; 1 ambulance and associated equipment.

**Craig Rural Fire Protection District**

The Craig Rural Fire Protection District is located in Moffat County but has a response area of 100 square miles within Routt County by Elk Head reservoir.

**US Forest Service (Hahn's Peak and Yampa Ranger District)**

The Hahn's Peak/Bear's Ears and Yampa Ranger Districts administer approximately 980,000 acres of public lands. The agency maintains and staffs one Type-6 engine based in Yampa and one initial attack hand crew based in Steamboat Springs. The agency provides initial attack assistance through mutual aid agreements on lands identified in the Routt County CWPP.

**BLM (Little Snake Field Office)**

The Bureau of Land Management administers about 50,000 acres of public lands in Routt County. The agency staffs and maintains 2-Type 6X engines, 1-Type 4 engine, out of Craig and The Craig Hot Shots, and 1-4 person initial attack squad. The BLM provides support as outlined in the Annual Operating Plan. Support and resource ordering is provided through the Craig Interagency Fire Dispatch Center. Routt County is a cooperator with the Northwest Colorado Fire Management Unit.

**Colorado State Forest Service**

The Colorado State Forest Service, Steamboat District is based in Steamboat Springs and encompasses Routt, Jackson and Moffat Counties. The Colorado State Forest Service does not have any first response fire suppression responsibilities. The agency fulfills their role in fire by providing training, equipment, technical assistance and funding, and by facilitating interagency mutual aid agreements and annual operating plans.

## **Communications**

The Routt County Communications Center provides Emergency-911 dispatch services (E-911) to all fire departments based in Routt County. Along with the E-911 telephone service, the Routt County Center also provides emergency notification to the residential public through the Emergency Preparedness Network (EPN), sometimes referred to as “Reverse 911”.

In 2009, the Routt County Communications Center completed a transition from traditional wide-band VHF and UHF radio frequencies to Colorado’s 800 MHz Digital Trunked Radio System (DTRS). The Center coordinates communication with fire, EMS, law enforcement, public works, emergency management and other responders such as federal fire resources from Craig Interagency Dispatch Center. Craig Dispatch is located in Craig, Colorado. Their coverage area includes all of northwest Colorado, including Routt County.



# Mitigation Areas & Strategies

## Desired Future Conditions and Goals

The important goal of this plan is protecting the communities and homeowners from a catastrophic wildland fire. Full support by the community and stakeholders of the plan is imperative. Actions must be taken within the communities and around individual homes to provide for the safety of firefighters and the public in the event of a wildfire. One of the components of a successful program is to provide on-going educational opportunities to fully inform homeowners about *FIREWISE*. Recognizing the importance of attempting to properly sequence treatments on the landscape by working first around individual homes and within the communities and then moving further out into the surrounding landscape is necessary.

The desire of the stakeholders is to reduce the amount of hazardous fuels within and adjacent to the community, reduce and regulate fuel loading and modify the vegetation structure and stand composition as necessary to protect life, property and resources. Thinning trees and reducing ground and ladder fuels will accomplish this. When fully implemented, the stand composition in combination with a *FIREWISE* community will provide for firefighter and public safety and afford fire suppression personnel a greater than ninety percent success rate when defending a community or isolated home against a wildland fire, while respecting the aesthetic values important to the local residents and visitors.

In order to accomplish this future condition reasonable mitigation objectives and goals must be formulated.

### Goals

- Provide for firefighter and public safety.
- Protect the public and private property resource from wildfire.
- Maintain healthy watersheds.
- Coordinate fire protection strategies across property boundaries.
- Continue to raise awareness by building on the ongoing public information/Firewise programs in Routt County.

### Objectives/Strategies

- Provide defensible space around individual structures by reducing the fuel load.
- Coordinate fuels management activities across ownerships such as US Forest Service/BLM boundary areas.
- Create different vegetative communities and vegetation patterns that are less continuous, include more random openings, and consist of a variety of age classes.

- Create shaded fuel breaks in appropriate locations.
- Reduce structural ignitability.
- Increase emergency preparedness.
- Establish lines of communication with stakeholders necessary to set project priorities, request and receive funding, carryout fuel management projects.
- Provide homeowners and others with the information necessary to fully implement the *Firewise* programs on a property-by-property basis.
- Enhance ecosystem health by reducing the fuel loading and stand composition to more natural levels.
- Use a variety of treatment methods that will provide the least impact to the community and neighboring lands and, when possible, utilize the by-products.

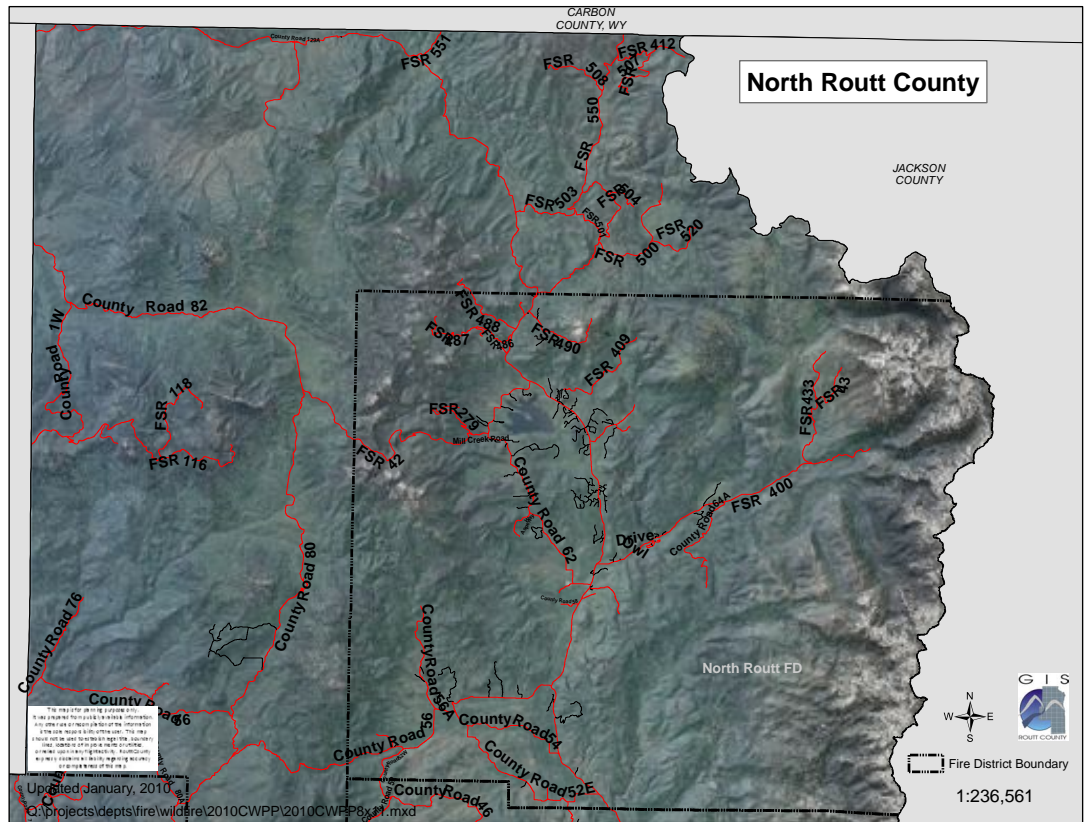
### **Planning Area Boundaries**

The planning area is the entire Routt County area. It is formed by the boundary between Moffat and Rio Blanco Counties on the West, Jackson and Grand Counties on the east, Eagle County to the south and the state of Wyoming to the north.

For ease of discussion and reference the entire planning area has been divided into four areas: North Routt, Steamboat area, West Routt, and South Routt. These areas roughly resemble those of the Fire Protection Districts with the exception being Yampa and Oak Creek FPDs being combined.

These boundaries are by no means absolute as they are only meant as a guide. Many properties might cross more than one of these boundaries.

## North Routt Area



The area of focus in the North Routt area consists of the North Routt Fire Protection District and the unincorporated areas to the north and west up to the Routt County line.

### North Routt CWPP

The North Routt CWPP was finalized in 2007. The following tables were taken from the plan and illustrate specific projects that community deemed appropriate:

**Table 6.** Fuel Treatment Projects – North Routt CWPP

Project or Activity	Responsible Party	Priority
Seedhouse (In progress)	USFS	High
Larson 2 – scheduled for 2008	USFS	High
Big Creek Ridge	USFS	Other
Prospector	USFS	High
Develop fuel break system for Homeowners Association	HOAs	High
Fuel Reduction on State Parks and particularly Division of Wildlife land	Division of Wildlife, State Parks	High
Review for treatment on all state lands within the Wildland Urban Interface	CSFS	Other
US Forest Service land adjacent to Willow Creek subdivision	US Forest Service	High
Utilize existing roads for fuel breaks, thin adjacent	Routt County, Colorado	Other
State, federal and private lands adjacent to Pearl	CSFS, USFS, Division of Wildlife, BLM, State Parks and Private landowners	High
Treat fuels near homes	Private landowners	High

**Table 7.** Projects to Reduce Structural Ignitability – North Routt CWPP

<b>Project or Activity</b>	<b>Responsible Party</b>	<b>Priority</b>
Create defensible space and reduce fire hazards on private property	CSFS, NRFPD and Private landowners	High
Evaluate defensibility of private property	CSFS, NRFPD and Private landowners	High
Post standardized address signs	Private landowners, Routt County	High
Research cost and feasibility of dry hydrant placement	CSFS, NRFPD	Other
Ensure proper handling of power and electric line slash generated during hazard reduction projects	CSFS, NRFPD residents	Other
Establish proper right-of-way clearance for all power lines in the area.	Yampa Valley Electrical Association	Other
Educate community about Fire Wise concepts	CSFS, NRFPD, CSU Extension	Other
Evaluate existing Wildland Urban Interface codes for rural communities	NRFPD	Other

**Table 8.** Projects to Increase Emergency Preparedness – North Routt CWPP

<b>Project or Activity</b>	<b>Responsible Party</b>	<b>Priority</b>
Post standardized address signs	Private landowners, Routt County	High
Develop North Routt Area individual and community evacuation plans. <a href="http://www.readycolorado.gov">www.readycolorado.gov</a>	Landowners, CSFS, NRFPD, Routt County,	High
Recruit North Routt Area residents to become members of North Routt Fire Protection District	North Routt Area residents and NRFPD	Other
Identify community members to serve as communication liaisons in the event of evacuation	North Routt Area residents	Other
Identify residents with mobility issues and inform NR Fire and Rescue	North Routt Area residents	Other
Properly maintain road signage	Routt County, USFS BLM and CSFS	Other
Annual review of CWPP	North Routt Area residents, NRFPD, CSFS, USFS, State Parks, DOW, BLM	Other

### Completed Projects

Many landowners have begun and/or completed fuels reduction projects. Many have also been able to take advantage of grant funding to help offset the associated project costs.

Steamboat Lake State Park and Pearl Lake State Park have both completed large scale fuel reduction projects as a result of the beetle infestation. Most of these individual projects were completed in 2009 and some in 2010. A few areas are still planned for future treatments.

### **Other Areas**

The areas in northern Routt County outside of the North Routt CWPP are to the north and west of the North Routt Fire Protection District.

### Communities Involved

The primary ownerships in extreme North Routt County are large ranches. The most prominent being 3-Forks Ranch, Salisbury Ranch, and the Focus Ranch.

The Salisbury Ranch and the Focus Ranch were both placed into conservation easements by the Routt County Purchase of Development Rights Program. They are working cattle ranches and the resource shall be maintained as such.

Three Forks Ranch is located along the Colorado/Wyoming border. It is a working cattle ranch but also is a resort offering many recreational opportunities (fishing, hunting, spa, skiing).

Quaker Mountain Ranch is a subdivision west of the fire district and north of Hayden. This area is predominately in aspen, and, therefore, not of great concern for wildfire.

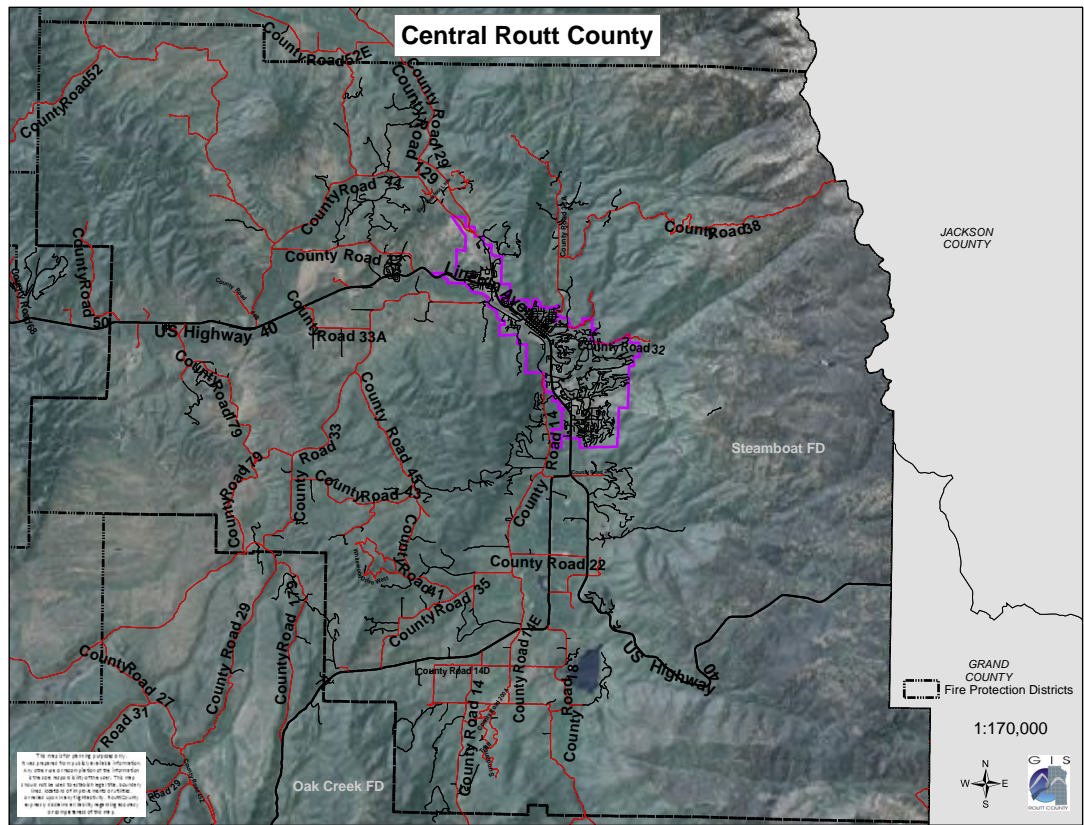
Smith Rancho is another large landowner north of Hayden: no real concerns at this time.

The Routt County Emergency Manager and North Routt Fire Protection District Chief are currently opening dialogs with these large landowners to further discuss any concerns they may have.

**Table 9.** Projects/Areas of Concern – North Routt

<b>Project, Activity, Concern</b>	<b>Responsible Party</b>	<b>Priority</b>
Post standardized address signs	Private landowners, Routt County	High
Create defensible space and reduce fire hazards on private property	Private landowners	High
Maintain proper right-of-ways as it relates to hazard fuels/trees	Private landowners, Routt County	High
Deadwood removal and replanting as needed for proper regeneration	Private landowners	High
Maintain recreational opportunities	Private landowners	High

## Steamboat Springs Area



The area of focus in the Steamboat Springs Area consists of the City of Steamboat Springs and the Steamboat Springs Rural Fire Protection District.

The Steamboat Springs and surrounding area comprise the greatest amount of value at risk. Several Existing CWPPs were created but many gaps remain to be discussed and evaluated.

### **Fish Creek - Sanctuary CWPP**

The Fish Creek – Sanctuary CWPP was finalized in 2007. That area’s projects and priorities are in the tables below.

**Table 10.** Fuel Treatment Projects – Fish Creek - Sanctuary CWPP.

<b>Project or Activity</b>	<b>Responsible Party</b>	<b>Priority</b>
Reduce ignitable underbrush and maintain defensible space	Private landowners	High
Create fuel break along trail behind homes in Sanctuary	Private landowners; CSFS; USFS	High
Deadwood removal and replanting along Fish Creek	Private landowners	High
Annual preventative spraying	Private landowners	High
Maintain defensible space related to WAPA power grid	Private landowners; WAPA	Moderate
Identify and implement Gambel oak fuel reduction	Private landowners	Moderate
Maintain communication and collaboration with Steamboat Ski Area on ongoing and future projects	Private landowners; SSRC	Moderate

**Table 11.** Projects to Reduce Structural Ignitability – Fish Creek - Sanctuary CWPP.

<b>Project or Activity</b>	<b>Responsible Party</b>	<b>Priority</b>
Provide fire danger/firewise information to residents		High
Provide evacuation checklist for homeowners	Private landowners	Moderate
Inform contractors of CWPP	Private landowners	Low
Provide input and voice to projects within CWPP boundary	Private landowners	Low



**Table 12.** Projects to Increase Emergency Preparedness – Fish Creek - Sanctuary CWPP.

<b>Project or Activity</b>	<b>Responsible Party</b>	<b>Priority</b>
Reduce human caused fire risk (Smokey Sign)	Private landowners	High
Optimize Emergency Notification	Private landowners	High
Create Evacuation Plan	Private landowners	High
Ensure highly visible house numbering	Private landowners	Low
Public Education		Moderate
Maintain/Augment trails for fire access		Moderate

While the Fish Creek – Sanctuary CWPP boundary includes the Burgess Creek area, specific projects, etc are discussed in the Burgess Creek CWPP.

#### Completed Projects

In addition to annual meetings, communication, and preventative spraying, two larger projects were completed with the assistance of grant money. The first project was the Sanctuary Fuels Treatment Project in 2007. This project leveraged grant money to create a 1.5 mile shaded fuel break behind 23 lots.



*Sanctuary Fuels Treatment Project area, 2007*

The second project was completed in 2009. This grant related project involved removing the beetle kill and other deadwood along Fish Creek and replanting.



*Sanctuary Project, 2009*

### **Burgess Creek CWPP**

The Burgess Creek CWPP was finalized in 2004. This area's projects and priorities are summarized below.

**Table 13.** Fuel Treatment Projects – Burgess Creek CWPP.

<b>Project or Activity</b>	<b>Responsible Party</b>	<b>Priority</b>
Implement intra-community fuel hazard reduction program (defensible space)	Private landowners	High
Develop a fuelbreak along the ridge between Fish Creek and Burgess Creek	Private landowners	High
Thin lodgepole pine stand to the south of Burgess Creek	Private landowners	High

**Table 14.** Projects to Improve Emergency Preparedness – Burgess Creek CWPP.

<b>Project or Activity</b>	<b>Responsible Party</b>	<b>Priority</b>
Improve roads and driveays where needed	Private landowners	High
Improve house number visibility	Private landowners	High
Create Evacuation Plan	Private landowners	High

### **Completed Projects**

Many homeowners have created defensible space either on their own or with the assistance of grant money.

In 2005, the USFS substantially reduced oak brush fuels located at the eastern end of this CWPP area (end of Ridge Road)

In 2009, most homes with mountain pine beetle related trees had them removed and those larger areas still untreated will be dealt with in the spring of 2010 with the assistance of ARRA grant money.

### **Steamboat Pines CWPP**

The Steamboat Pines CWPP was finalized in 2004. This area's projects and priorities are summarized below.

**Table 15.** Fuel Treatment Projects – Steamboat Pines CWPP.

<b>Project or Activity</b>	<b>Responsible Party</b>	<b>Priority</b>
Implement intra-community fuel hazard reduction program (defensible space)	Private landowners	High
Coordinate a central slash disposal system for the community	Private landowners	High
Develop fuel break along top of Blue Grouse Ridge	Private landowners	High
Develop fuel break along the top of the primary ridge to the west of Steamboat Pines.	Private landowners	High

**Table 16.** Projects to Improve Emergency Preparedness – Steamboat Pines CWPP.

<b>Project or Activity</b>	<b>Responsible Party</b>	<b>Priority</b>
Improve roads and driveways where needed	Private landowners	High
Improve house number visibility	Private landowners	High
Expand fire protection water system and increase storage capacity to at least 20,000 gallons	Private landowners	High
Create Evacuation Plan	Private landowners	High

### **Completed Projects**

Several homeowners have created defensible space either on their own or with the assistance of grant money.

Water supply has been improved with the creation of a hydrant and underground tank.

### **Other Areas/Communities**

The Steamboat Springs area is one of the largest presently without coverage under an existing CWPP. The three previous CWPPs cover a certain amount but many other areas need discussion.

Overall, projects and priorities should focus on reducing human caused fires in recreation areas and protecting view sheds, recreation opportunities, utilities, watersheds and neighborhoods.

#### **Ski Area**

**Concerns:** Utilities, infrastructure, watershed, recreational opportunities

**Priorities:** dead lodgepole removal, vegetation management around infrastructure and utilities, break up continuity of Gambel oak fuels where appropriate

#### **Fish Creek/Sanctuary Area**

Even though the Fish Creek/Sanctuary CWPP already exists, Fish Creek Reservoir and Long Lake watersheds are a priority and efforts made to protect that watershed. Settlement ponds around Mt Werner Water should also be protected.

#### **Spring Creek Area**

**Concerns:** maintain recreational opportunities

**Priorities:** dead lodgepole and hazard tree removal, vegetation management around adjacent subdivisions.

#### **Strawberry Park to Mad Creek Area**

**Concerns:** hazard trees on ROW in Strawberry Park, Buffalo Pass, Hot Springs and top of Perry Mansfield

**Priorities:** dead lodgepole and hazard tree removal, vegetation management around adjacent subdivisions.

#### **Howelson Hill/Emerald Mountain Area**

**Concerns:** maintain recreational opportunities; utilities and other infrastructure protection.

**Priorities:** dead lodgepole and hazard tree removal; vegetation management around adjacent subdivisions and infrastructure; increase signage due to usage.

**BLM Emerald Mountain Fuels Project– Proposed.** This project is located in Steamboat Springs on Emerald Mountain. It would afford protection of the community from wildfire, reduce the risk of wildfire escaping public lands, reduce the risk of large, high intensity wildfires, improve and maintain healthy ecosystems, and protect critical community infrastructures, i.e., FAA tower and power lines. Prescribed fire or mechanical methods may be used to reduce fire

hazards or improve resource conditions for this parcel. Public input will be solicited for this hazardous fuel treatment and further details will be forthcoming.

#### Milner Area (North and South)

**Concerns:** Agricultural burning is very common in this area.

**Priorities:** vegetation management around adjacent subdivisions and infrastructure; increase public awareness of ag burning and proper notification to authorities

#### Hwy 131 Corridor

**Concerns:** Agricultural burning is common in this area; hazard trees in and around structures and ROWs.

**Priorities:** dead lodgepole and hazard tree removal; vegetation management around adjacent subdivisions and infrastructure; increase public awareness of ag burning and proper notification to authorities

#### Lower Elk River Corridor

**Concerns:** Agricultural burning is very common in this area; maintain recreational opportunities; utilities and other infrastructure protection.

**Priorities:** dead lodgepole and hazard tree removal; vegetation management around adjacent subdivisions and infrastructure; increase public awareness of ag burning and proper notification to authorities

BLM Elk Mountain Prescribed Fire – 700 acres. Project site is on south side of Elk Mountain eight miles northwest of Steamboat Springs. The vegetation is thick sagebrush, mountain shrub at higher elevations with some patches of aspen. Burning will convert the sagebrush dominated areas into primarily grass and forb (wildflower) areas. Burning will reduce the height and volume of mountain shrubs but will initiate rapid resprouting which improves habitat for deer and elk. Disturbance, such as fire, is also required for aspen regeneration. In addition to hazardous fuel reduction, the introduction of fire will improve overall ecosystem health by creating a mosaic of vegetation age classes.

### Catamount/US40 Area

**Concerns:** maintain recreational opportunities; utilities and other infrastructure protection; hazard trees in and around structures and ROWs.

**Priorities:** dead lodgepole and hazard tree removal; vegetation management around adjacent subdivisions and infrastructure; increase signage due to usage and hazards.

Catamount Ranch & Club. This development along US Highway 40 has created defensible space plans for 76% of the lots as of 2009. Implementation has occurred on many with the goal being 100%.

Storm Mountain Ranch. This subdivision is along US Highway 40 adjacent to Catamount Ranch and Club. All individual lots have created defensible space plans. Many have implemented those plans (some as part of the ARRA Grant).

Lake Catamount. This development surrounds Lake Catamount to the south of Rabbit Ears Pass. While most of those lots either haven't been built upon or are located in meadow/grass, 35% of those lots have created defensible space plans.

**Table 17.** Projects/Areas of Concern – Steamboat Springs Vicinity

<b>Project, Activity, Concern</b>	<b>Responsible Party</b>	<b>Priority</b>
Post standardized address signs	Private landowners, Routt County	High
Create defensible space and reduce fire hazards on private property	Private landowners	High
Implement all existing defensible space/mitigation plans	Private landowners	High
Maintain proper right-of-ways as it relates to hazard fuels/trees	Private landowners, Routt County	High
Deadwood removal and replanting as needed for proper regeneration	Private landowners	High
Increase public awareness of ag burning	Routt County	High
Maintain recreational opportunities	Private landowners	High

### Completed Projects

Many of the fuel reduction projects related to mountain pine beetle mortality are being addressed in 2010 as a result of the ARRA grant the City of Steamboat Springs received.



*Burgess Creek and Steamboat Ski Area, 2008*



*Burgess Creek and Steamboat Ski Area, 2010*

**Table 18.** ARRA Completed Projects – City of Steamboat Springs Grant

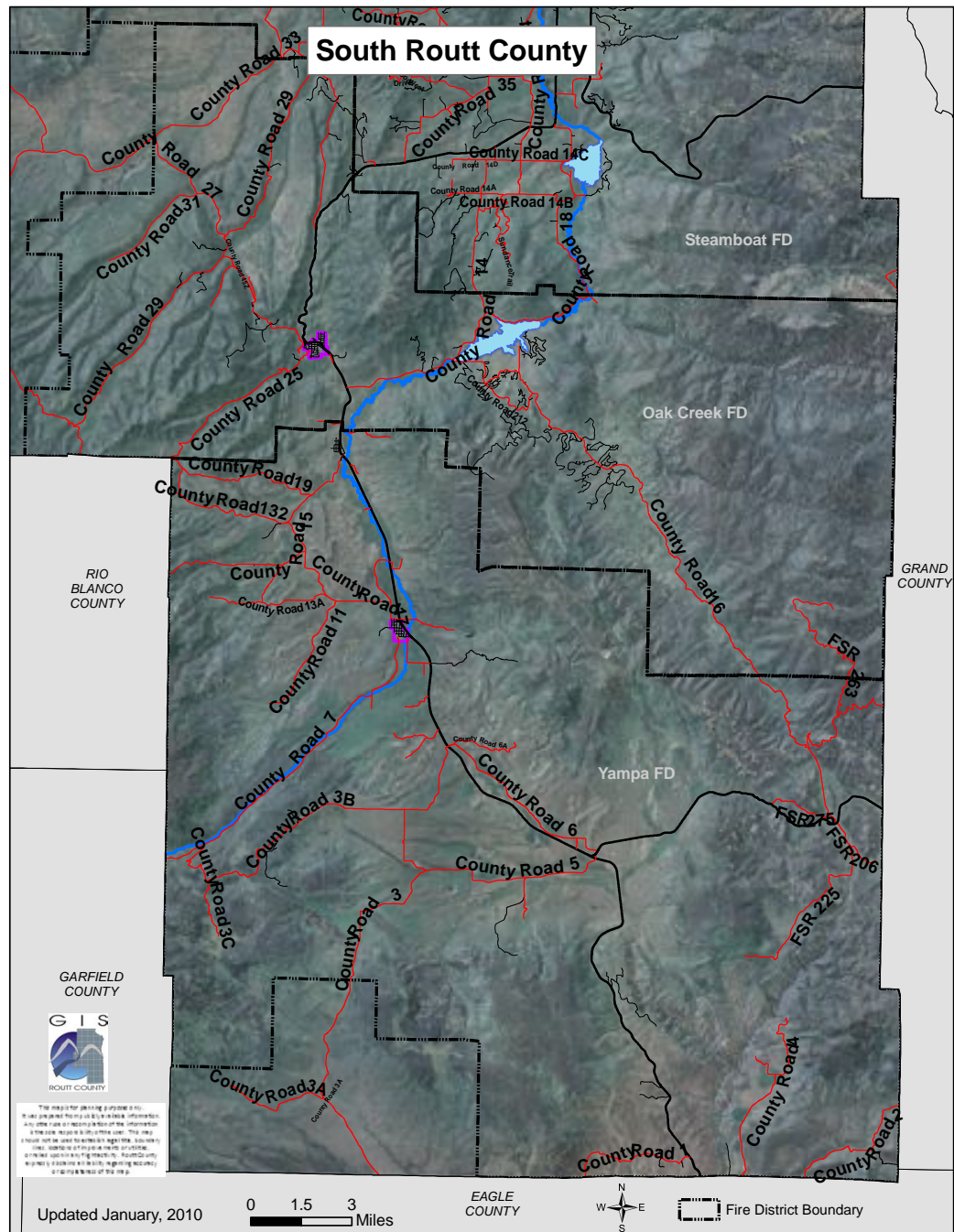
<b>Area/Units</b>	<b>Acreage</b>
Spring Creek Area (Units 1,4,5,6, 7)	57.6
Burgess Creek (Units 14,15)	18.6
Steamboat Ski Area (Units 18-27)	51.8
Storm Mountain Ranch (Unit 30)	20.36
Emerald Mountain (Units 31-38)	101.2

In addition to these and individual projects, the US Forest Service has issued firewood permits to remove fuels up and down the boundary with private land in the Steamboat area.

BLM completed the Elk Mountain prescribed fire in 2010 encompassing 700 acres for hazardous fuel reduction and wildlife improvement.



## South Routt



The area of focus in the South Routt area consists of the Oak Creek Fire Protection District, Yampa Fire Protection District and the unincorporated area along the southern Routt County line.

### Stagecoach Area CWPP

The Stagecoach Area CWPP was finalized in 2007. That area's projects and priorities are in the tables below.

**Table 19.** Fuel Treatment Projects – Stagecoach CWPP.

<b>Project or Activity</b>	<b>Responsible Party</b>	<b>Priority</b>
For roads create a safer ingress and egress: County Road 16, Pima, Seneca, Ute Trail, 1st and 2nd Filly Trail and Colt Trail	Stagecoach Property Owners Association	High
Other Roads: Schussmark Trail, Greenridge Road, Halter, Hockeye, County Road 212, Mt. Meadow Lane	Stagecoach Property Owners Association	Other
Power line clearance (Maricopa mile marker 6 to 7 on County Road 16)	Stagecoach Property Owners Association	High
Fuel Treatment Reduction in Eagleswatch Subdivision	Stagecoach Property Owners Association & Eagleswatch Subd.	High
Defensible Space (Well houses and Booster Stations)	Morrison Creek Metro Dist.	High
Southwest portion of Middle Morrison Creek sub area	USFS	High
Mt. Elim vicinity (Bible Camp)	Mt Elim Bible Camp	High
Hideaway Ranch	Hideaway Ranch	High
Fuel Reduction on State Parks and particularly Division of Wildlife to be consistent with Division of Wildlife management objectives.	DOW, State Parks	High
Review for treatment on all state lands within the Wildland Urban Interface	CSFS	High
Timber sale on state land off of County Road 16	CSFS	High
Treat fuels near homes, FireWise	Private landowners	High

**Table 20.** Projects to Reduce Structural Ignitability – Stagecoach CWPP.

<b>Project or Activity</b>	<b>Responsible Party</b>	<b>Priority</b>
Educate community and individual subdivisions about Fire Wise concepts	CSFS, OCFPD, Stagecoach Property Owners Association	High
Chipper projects	Stagecoach Property Owners Association, CSFS	High
Create defensible space and reduce fire hazards on private property	CSFS and Private landowners	High
Evaluate defensibility of private property	CSFS, OCFPD t and Private landowners	High
Display address nomenclature for all homes and structures in the Oak Creek Fire Protection District	Private landowners, Routt County, OCFPD	High
Encourage Routt County to participate through funding	Routt County	Other

**Table 21.** Projects to Increase Emergency Preparedness – Stagecoach CWPP.

<b>Project or Activity</b>	<b>Responsible Party</b>	<b>Priority</b>
Post evacuation route signs	Routt County and Stagecoach Property Owners Association	High
Develop Stagecoach Area individual and community evacuation plans	Landowners & HOA, CSFS, OCFPD, Routt County	High
Identify water sources (with agreements in place)	OCFPD and USFS	High
New cell towers for increased cell phone coverage	Routt County	High
For roads ensure creation of safer ingress and egress in the event of a wildfire	Routt County, Stagecoach Property Owners Association, OCFPD, CSFS and USFS	High
Identify residents with mobility issues and inform Oak Creek Fire Protection District	Stagecoach Area residents	High
Annual review of Community Wildfire Protection Plan	All parties	High
Recruit Stagecoach Area residents to become members of Oak Creek Fire Protection District	Stagecoach Area residents and Oak Creek Fire Protection District	Other
Identify community members to serve as communication liaisons in the event of evacuation	Stagecoach Area residents	Other
Communication with campgrounds, forest and park visitors	U.S. Forest Service and State Parks	Other
Properly maintain road signage	Routt County, USFS, BLM and CSFS	Other

Blacktail Mountain BLM Prescribed Fire – 915 acres. Project site is northeast of Stagecoach Reservoir. The project area is shared by BLM, Colorado State, Upper Yampa Water Conservancy District and private landowners. It is managed by Colorado Division of Wildlife. This area is surrounded by ranches and residences at risk from wildfire. Wildfires have not been common in this area, however with increased frequency of drought and human activity, the risk has also risen. Habitat quality has continued to deteriorate over the years due to declining shrub species productivity. The objective is to burn 40-70% of the vegetation within the treatment area to create a mosaic and edge effects for improved wildlife habitat. It will also remove the abundance of dead and decadent vegetation which will help reduce the intensity of any future wildfires.

### Completed Projects

Several homeowners along County Rd 16 have created defensible space either on their own or with the assistance of grant money.

BLM completed the Blacktail Mountain prescribed fire in 2010 and completed hazardous fuels reduction adjacent to South Shore Subdivision in 2004.

Oak Creek Fire Protection District as part of their grant has begun and completed some of their planned fuels reduction projects in the Stagecoach area.



*One of OCFPD fuels reduction projects, 2010 (before and after)*

### **Other Areas/Communities**

Projects and priorities should focus on reducing human caused fires in recreation areas and protecting view sheds, recreation opportunities, utilities, watersheds and neighborhoods.

#### **Oak Creek Area**

**Concerns:** Agricultural burning is very common in this area; maintain recreational opportunities; utilities and other infrastructure protection.

**Priorities:** Dead lodgepole and hazard tree removal; vegetation management around adjacent subdivisions and infrastructure; increase public awareness of ag burning and proper notification to authorities

#### **Yampa/Toponos Area**

**Concerns:** Agricultural burning is very common in this area; maintain recreational opportunities; utilities and other infrastructure protection such as water sources in the Stillwater Reservoir area.

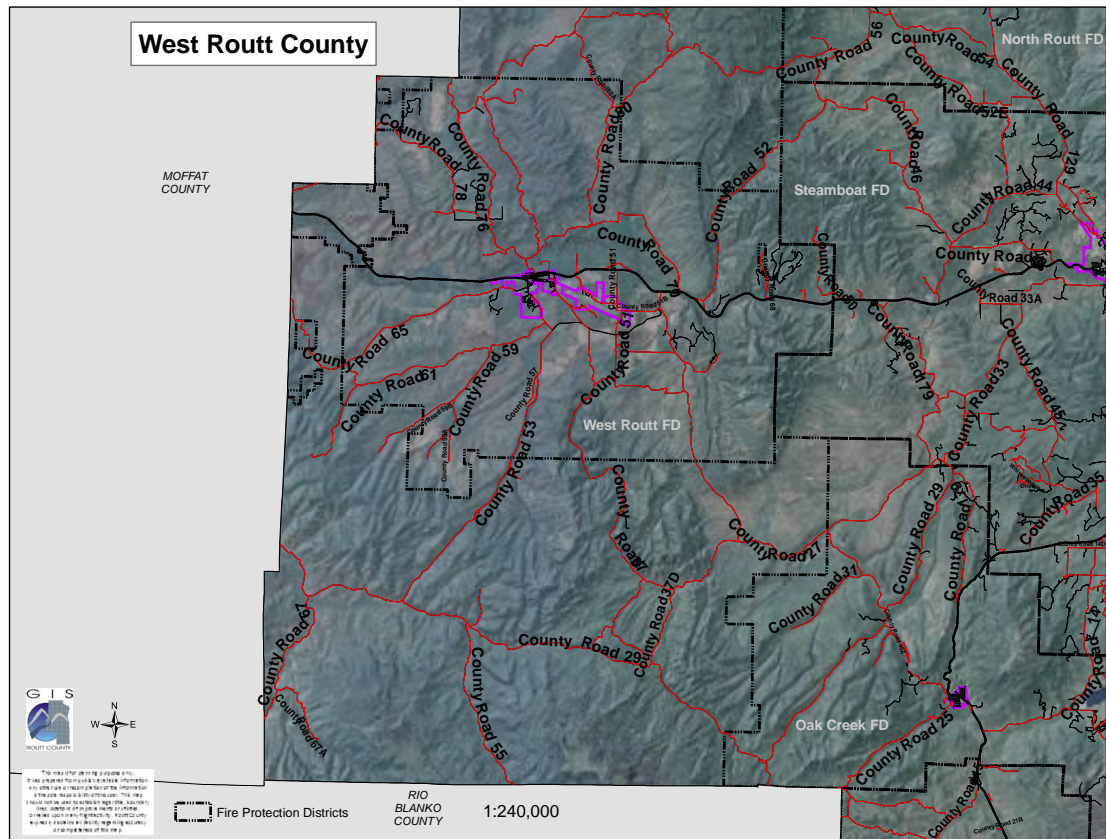
**Priorities:** Dead lodgepole and hazard tree removal; vegetation management around adjacent subdivisions and infrastructure; increase public awareness of ag burning and proper notification to authorities

**Table 22.** Projects/Areas of Concern – South Routt Area

<b>Project, Activity, Concern</b>	<b>Responsible Party</b>	<b>Priority</b>
Post standardized address signs	Private landowners, Routt County	High
Create defensible space and reduce fire hazards on private property	Private landowners	High
Maintain proper right-of-ways as it relates to hazard fuels/trees	Private landowners, Routt County	High
Deadwood removal and replanting as needed for proper regeneration	Private landowners	High
Increase public awareness of ag burning	Routt County	High
Maintain recreational opportunities	Private landowners, USFS	High



## West Routt



The area of focus in the West Routt area consists of the West Routt Fire Protection District and the land to the west and south up to the Routt County line.

Agricultural burning is very common in western Routt County. The possibility for escaped prescribed fire exists. Increasing public awareness as well as proper notification by the ranchers should be a priority.

Additional priorities would be educating and assisting landowners with proper vegetation management around their structures.

**Table 23.** Projects/Areas of Concern – West Routt Area

<b>Project, Activity, Concern</b>	<b>Responsible Party</b>	<b>Priority</b>
Post standardized address signs	Private landowners, Routt County	High
Create defensible space and reduce fire hazards on private property	Private landowners	High
Maintain proper right-of-ways as it relates to hazard fuels/trees	Private landowners, Routt County	High
Maintain infrastructure	Routt County and City of Hayden	High
Deadwood removal and replanting as needed for proper regeneration	Private landowners	High
Increase public awareness of ag burning	Routt County	High



## Future Projects Summary

Many projects are currently planned to help facilitate the implementation of this plan. Most of the smaller, private projects are not listed as they are difficult to track and are constantly in flux. The following tables, summaries and map help illustrate these known projects. Additional Maps can be found in the Appendix A.

### North Routt Area

**Table 24.** Current and Future Projects – North Routt Area.

Project, Activity, Concern	Responsible Party	Size
Create defensible space and reduce fire hazards on private property	Private landowners	Unk
Steamboat Lake & Pearl Lake Projects	Rocky Mt Youth Corp, CSFS	50
Willow Creek Project – fuel reduction	BLM	13 acres
Willow Creek Roadless Project – fuel reduction	USFS	
Red Creek Project - fuel reduction	BLM	50-100 acres
Columbine and 42 Fuels – fuels reduction around Columbine and Captains Cove Subdivisions	USFS	
Increase public awareness of ag burning	Routt County	N/A
Road hazard right-of-ways	Private landowners, Routt County, USFS	

#### Rocky Mountain Youth Corp ARRA Grant

The American Recovery and Reinvestment Act awarded a grant to The Rocky Mountain Youth Corp for the purpose of hazard tree removal and cleanup in Steamboat Lake State Park and Pearl Lake State Park. The Colorado State Forest Service is assisting in the coordination and scope of work.

#### Willow Creek Project - BLM

Scheduled for 2011 or 2012, the BLM plans on reducing hazardous fuels adjacent to the Willow Creek Subdivision. This project involves approximately 13 acres.

#### Willow Creek Roadless Project - USFS

The USFS in cooperation with the Willow Creek Subdivision plans on reducing hazardous fuels adjacent to the Willow Creek Subdivision.

#### Red Creek Project - BLM

Scheduled for 2012 or 2013, the BLM plans on reducing hazardous fuels and improving forest health south of Steamboat Lake. This project involves approximately 50-100 acres.

### Columbine and 42 Fuels - USFS

The USFS is currently in the implementation phase of fuels treatments on national forest in areas near or around Columbine and Captains Cove Subdivisions. Completion is planned for 2011.

### Routt County Road Hazard Project

An analysis of the hazard trees adjacent to private and public roads was conducted in 2009. Many of these roads and hazards are currently being addressed. The complete analysis can be found in the Appendix C.

### USFS Road Hazard Project

The US Forest Service is currently treating multiple forest service roads throughout the Routt National Forest. Full-scale tree removal along all forest roads that contain dead lodgepole pine is being utilized. Multiple roads segments are being addressed yearly with the completion anticipated in 2013.

## **Steamboat Springs Area**

**Table 25.** Current and Future Projects – Steamboat Springs Area.

<b>Project, Activity, Concern</b>	<b>Responsible Party</b>	<b>Size</b>
Create defensible space and reduce fire hazards on private property	Private landowners	Unk
ARRA Fuels Project	City of Steamboat Springs, CSFS	300 +/- acres
Steamboat Front Emerald Mt Project	USFS	3,000
Increase public awareness of ag burning	BLM	
Road hazard right-of-ways	Routt County Private landowners, Routt County, USFS	N/A

### City of Steamboat Springs ARRA Grant

The American Recovery and Reinvestment Act awarded a grant to The City of Steamboat Springs for the purpose of hazard tree removal on private and city land in and around the Steamboat Springs area. There are 30 different project sites totaling approximately 300 acres of treatment planned. The following map helps illustrate those project areas.

### Steamboat Front - USFS

The USFS is in the planning phase of treating dead lodgepole pine and shrubs in the interface surrounding Steamboat Springs. Approximately 3,000 acres have been identified for mechanical and prescribed fire treatments. Implementation is scheduled for 2011.

### BLM Emerald Mountain Fuels Project - Proposed

This project is located in Steamboat Springs on Emerald Mountain. It would afford protection of the community from wildfire, reduce the risk of wildfire escaping public lands, reduce the risk of large, high intensity wildfires, improve and maintain healthy ecosystems, and protect critical community infrastructures, i.e., FAA tower and power lines. Prescribed fire or mechanical methods may be used to reduce fire hazards or improve resource conditions for this parcel. Public input will be solicited for this hazardous fuel treatment and further details will be forthcoming.

### Routt County Road Hazard Project

An analysis of the hazard trees adjacent to private and public roads was conducted in 2009. Many of these roads and hazards are currently being addressed. The complete analysis can be found in the Appendix C.

### USFS Road Hazard Project

The US Forest Service is currently treating multiple forest service roads throughout the Routt National Forest. Full-scale tree removal along all forest roads that contain dead lodgepole pine is being utilized. Multiple roads segments are being addressed yearly with the completion anticipated in 2013.

## **South Routt Area**

**Table 25.** Current and Future Projects – South Routt Area.

<b>Project, Activity, Concern</b>	<b>Responsible Party</b>	<b>Size</b>
Create defensible space and reduce fire hazards on private property	Private landowners	Unk
Stagecoach Fuels Project – fuel reduction in and around Stagecoach area as part of State Fire Assistance Grant	OCFPD	
Morrison Creek Project – treatment along private/USFS boundary in Morrison Creek drainage	USFS	1,200
Increase public awareness of ag burning	Routt County	N/A
Road hazard right-of-ways	Private landowners, Routt County	

### Stagecoach Fuels Project

Oak Creek Fire Protection District received a State Fire Assistance Grant to reduce fuels in and around the Stagecoach area. Implementation began in 2010. The primary focus will be on creation of defensible space and Fire Wise measures and removal of large amounts of beetle kill lodgepole. This project will coordinate and assist property owners within the Stagecoach WUI with identification, mitigation and removal of hazard fuels including beetle kill lodgepole pine, oak brush and dead or dying aspen on occupied and unoccupied lots, the creation of defensible space on

occupied lots and enhance ingress and egress by thinning and removal of vagrant lodgepole which have grown up in roadways creating problematic ingress/egress and compromised escape routes.

#### Morrison Creek - USFS

The USFS is in the planning phase of treating fuels through timber harvests along the national forest and private land boundary in Morrison Creek area. Approximately 1,200 acres have been identified. Implementation is scheduled for 2011.

#### Routt County Road Hazard Project

An analysis of the hazard trees adjacent to private and public roads was conducted in 2009. Many of these roads and hazards are currently being addressed. The complete analysis can be found in the Appendix C.

#### USFS Road Hazard Project

The US Forest Service is currently treating multiple forest service roads throughout the Routt National Forest. Full-scale tree removal along all forest roads that contain dead lodgepole pine is being utilized. Multiple roads segments are being addressed yearly with the completion anticipated in 2013.

### **West Routt Area**

**Table 26.** Current and Future Projects – West Routt Area.

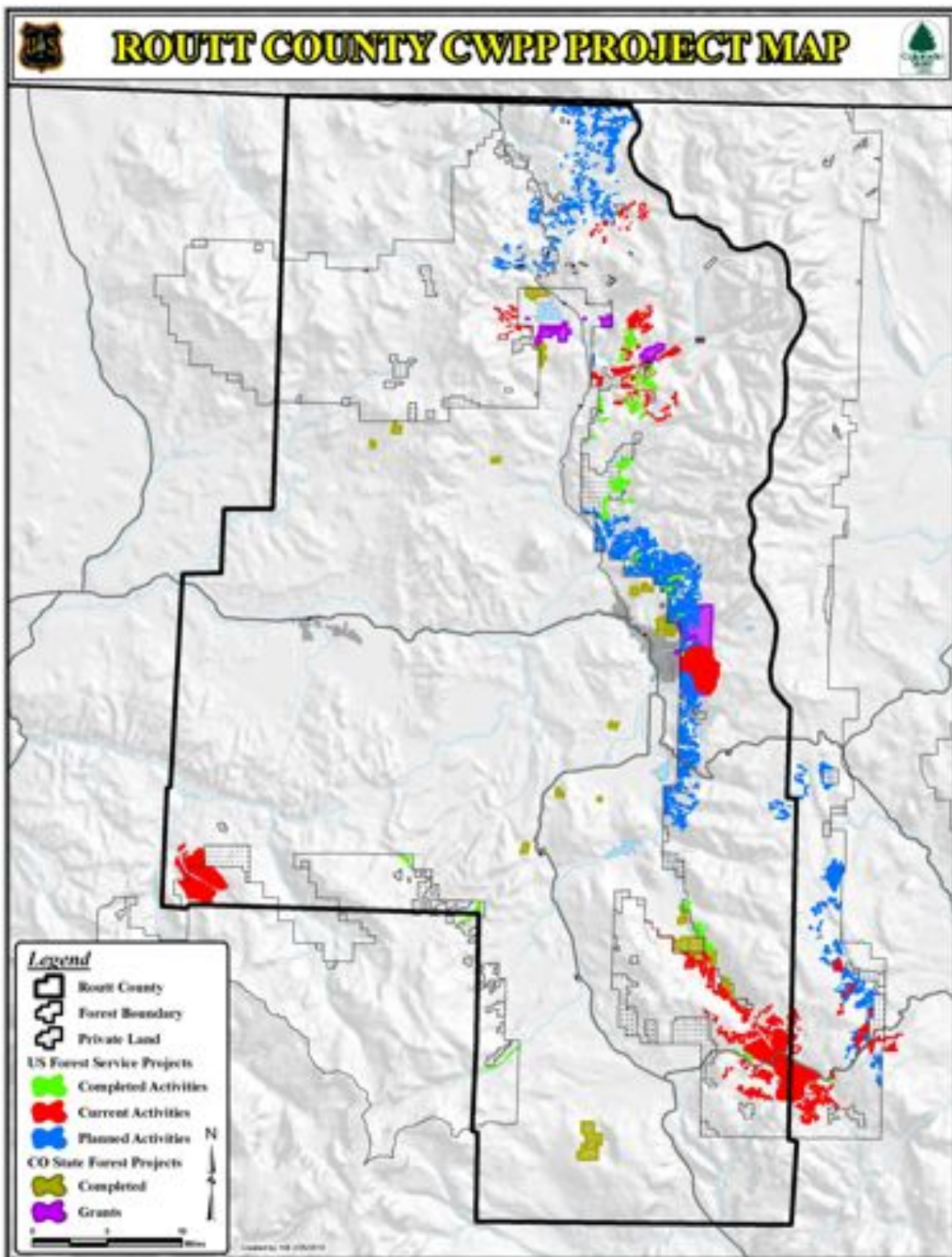
<b>Project, Activity, Concern</b>	<b>Responsible Party</b>	<b>Size</b>
Create defensible space and reduce fire hazards on private property	Private landowners	Unk
Increase public awareness of ag burning	Routt County	N/A
Road hazard right-of-ways	Private landowners, Routt County	

#### Routt County Road Hazard Project

An analysis of the hazard trees adjacent to private and public roads was conducted in 2009. Many of these roads and hazards are currently being addressed. The complete analysis can be found in the Appendix C

#### USFS Road Hazard Project

The US Forest Service is currently treating multiple forest service roads throughout the Routt National Forest. Full-scale tree removal along all forest roads that contain dead lodgepole pine is being utilized. Multiple roads segments are being addressed yearly with the completion anticipated in 2013.



# **Routt County Community Wildfire Protection Plan**



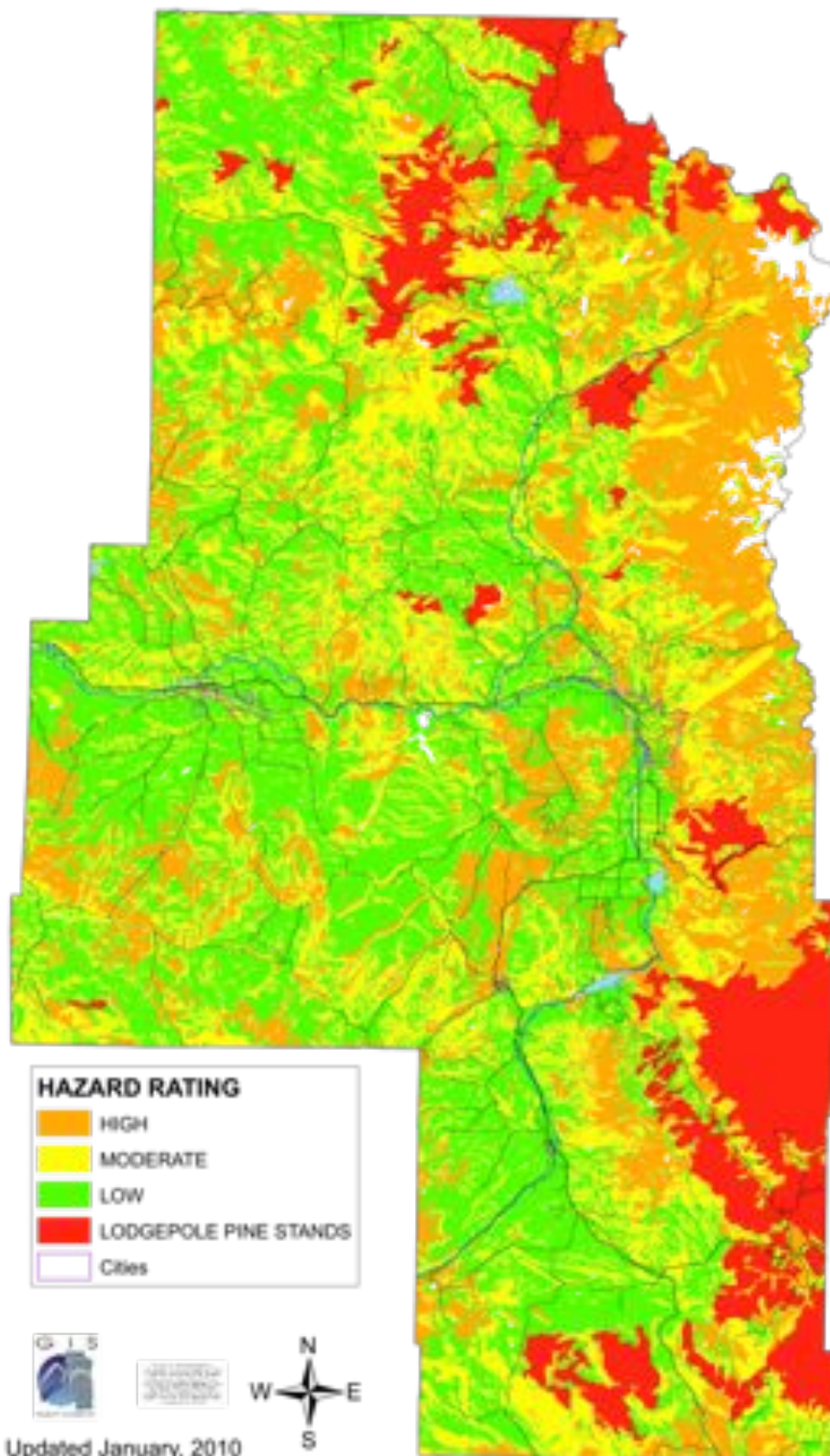
## **Appendix A Maps**

*September 2010*



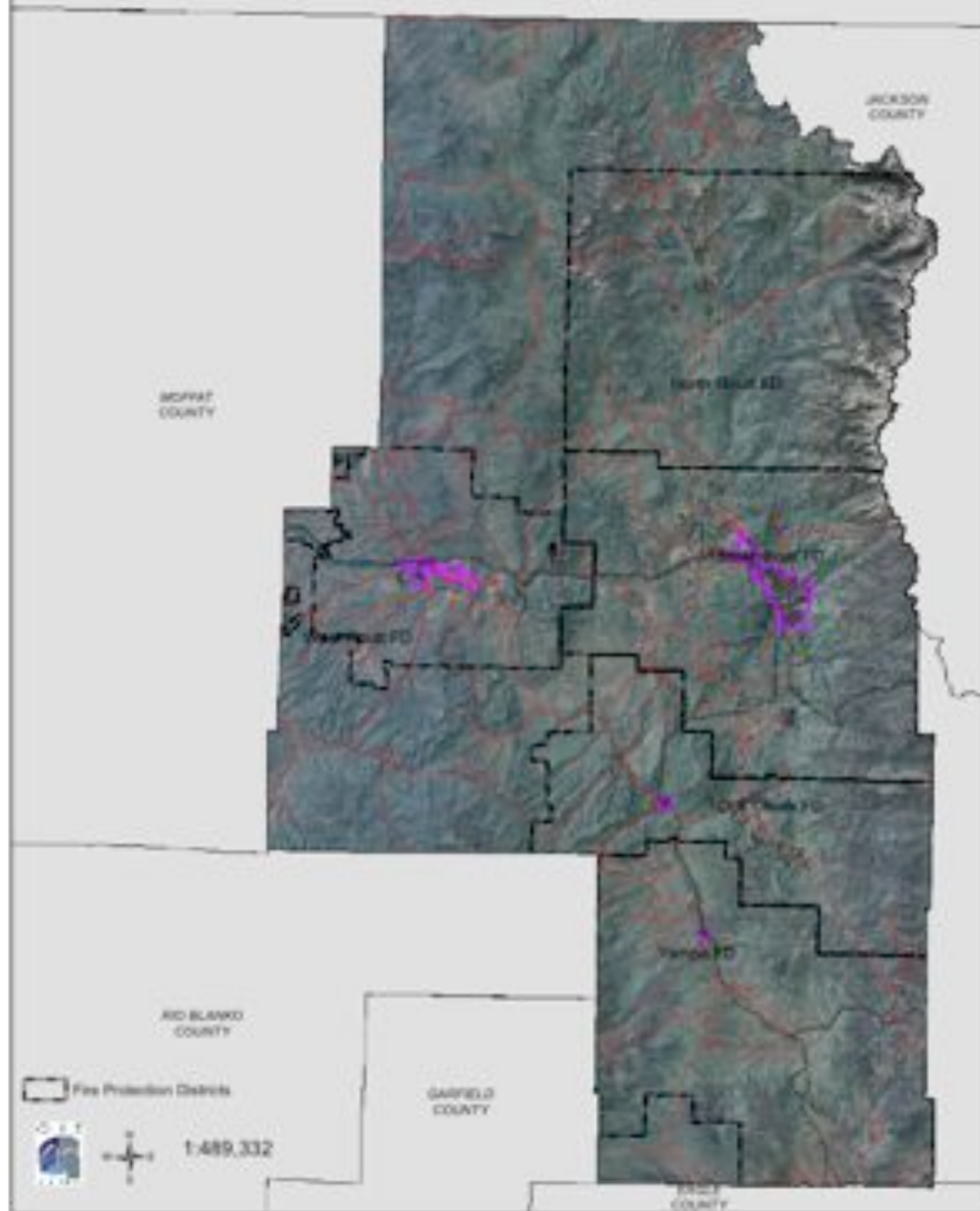


## Routt County Wildfire Hazard





# Routt County







WYOMING DEPARTMENT OF  
NATURAL RESOURCES  
DIVISION OF FIRE PROTECTION  
1000 WEST 2ND AVENUE  
CASP, WY 82401  
TEL: 307.251.2700  
WWW.DNR.WYOMING.GOV



0 2.5 5 10 Miles

Updated January, 2010

## Private Lands Not Within A Fire Protection District

### Hazard Rating

High

Moderate

Low

Lodgepole Pine Stands

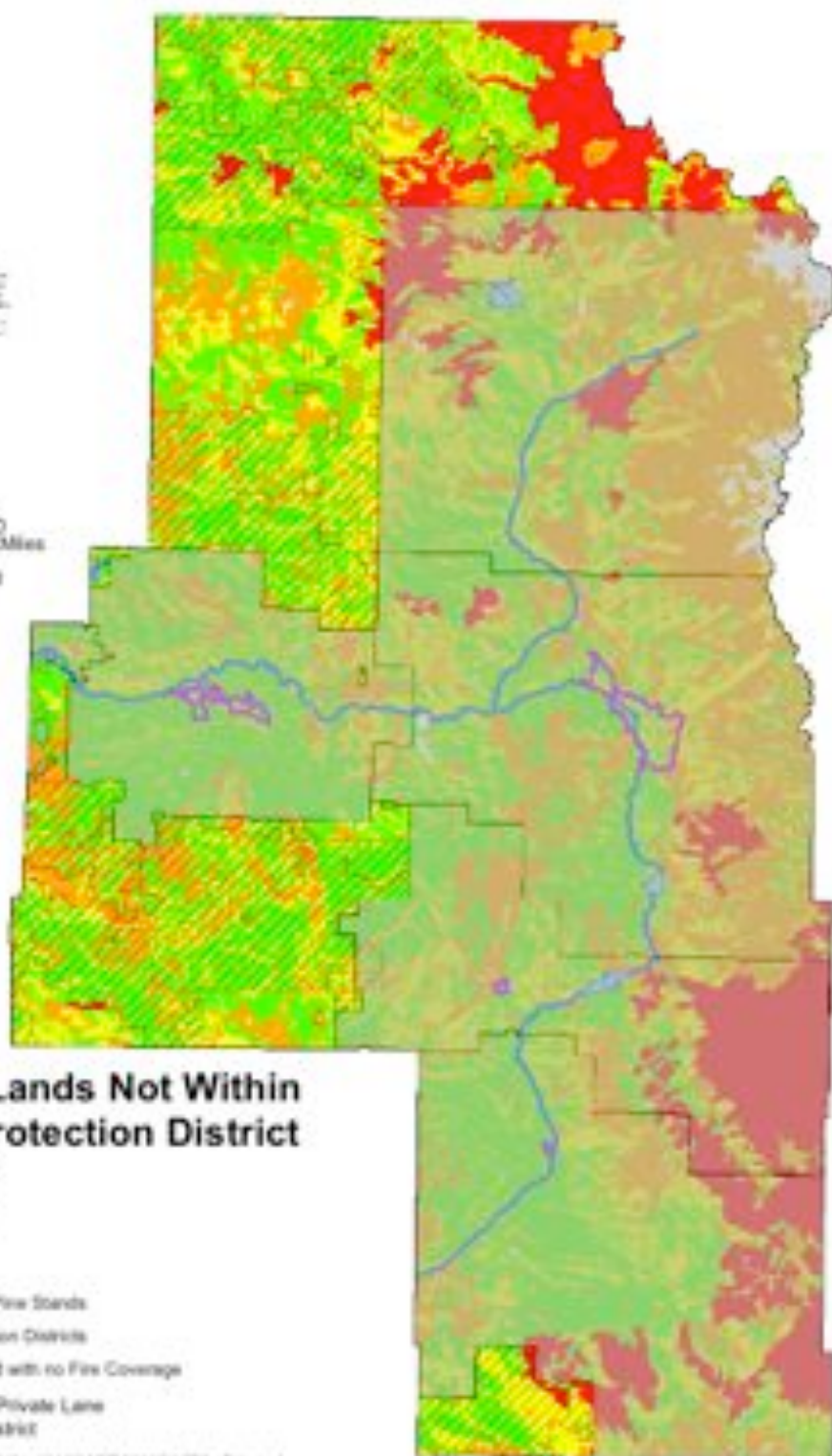
Fire Protection Districts

Private Land with no Fire Coverage

269,906 Acres of Private Land

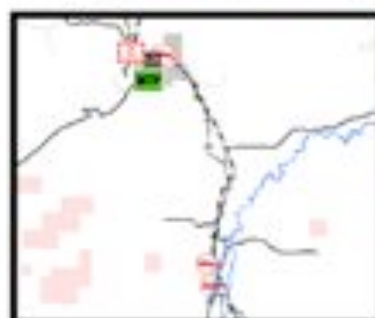
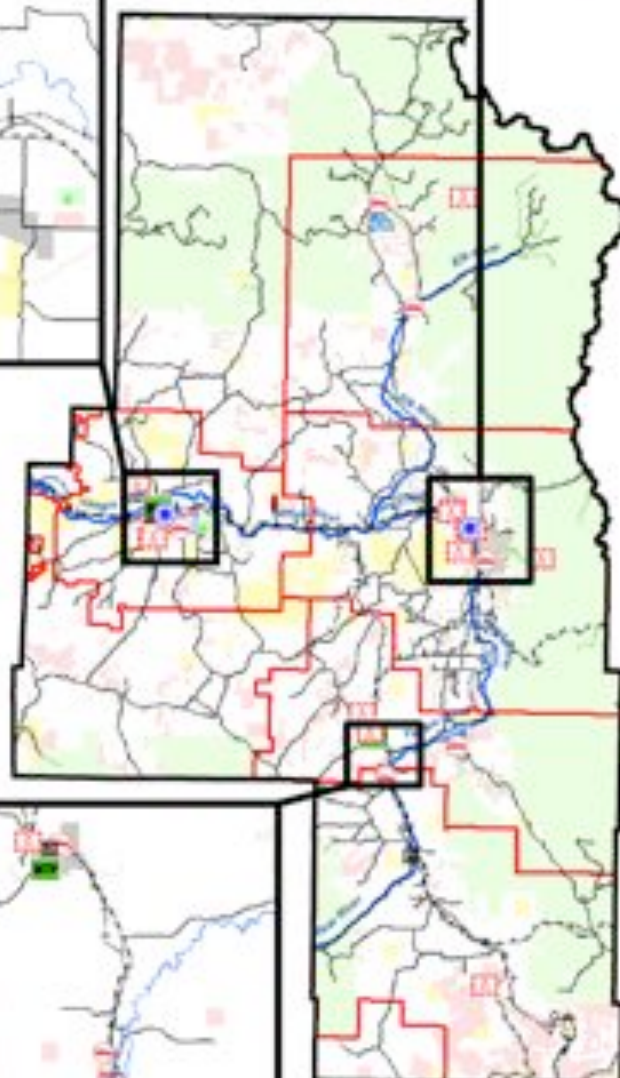
not within a fire district

G:\projects\delaware\delaware2010\WPP\2010\WPPFire.mxd





## Routt County Critical Infrastructure



The following are the general characteristics of the various types of microorganisms:

- Bacteria: unicellular organisms, prokaryotic cells.
- Fungi: eukaryotic organisms, multicellular or unicellular.
- Protozoa: eukaryotic organisms, unicellular.
- Viruses: non-cellular organisms, composed of nucleic acid and protein coat.

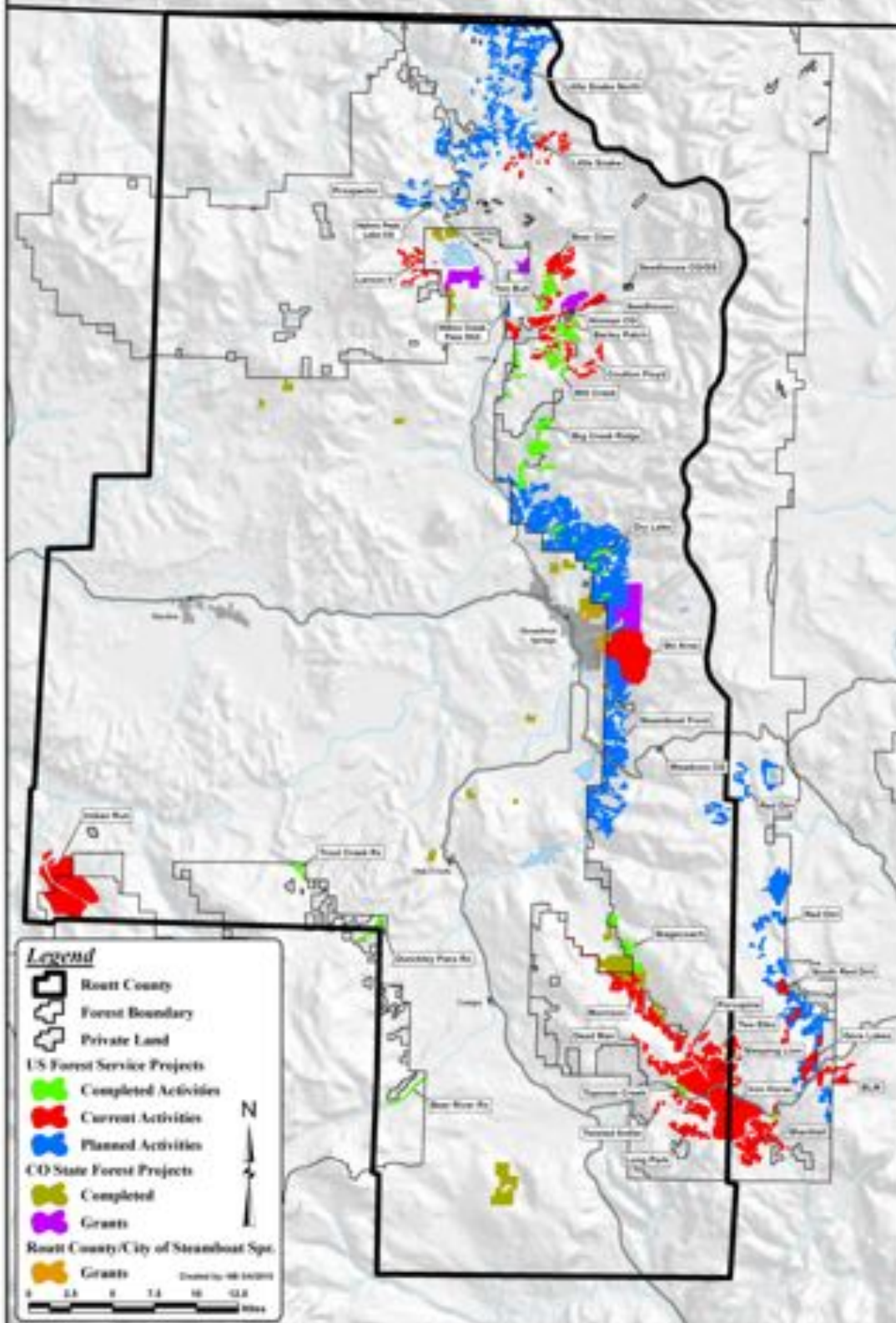
© 2004 Blackwell Publishing Ltd, *Journal of Internal Medicine* 255: 101–108







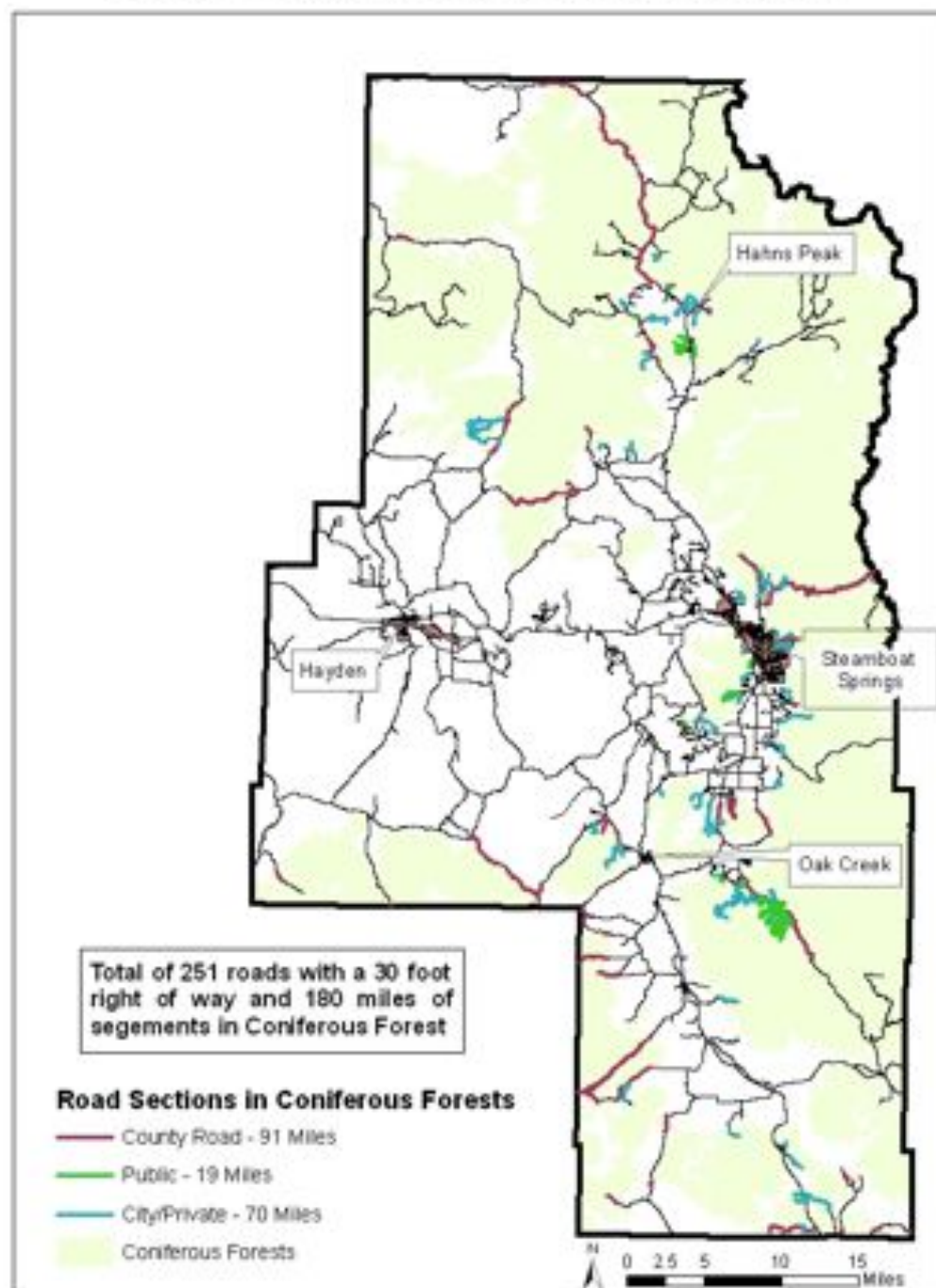
# ROUTT COUNTY CWPP PROJECT MAP





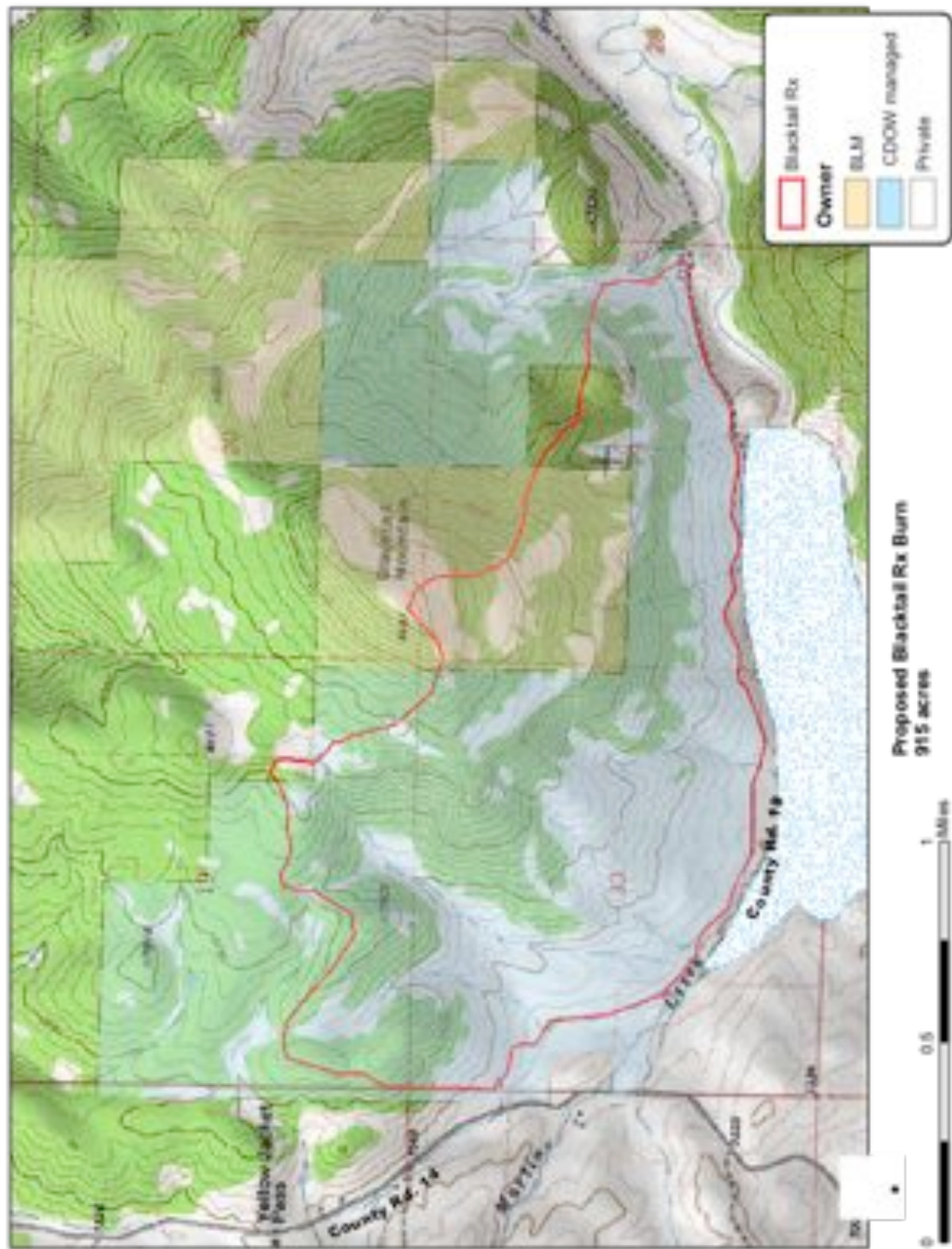


## Routt County Road Clearing Analysis



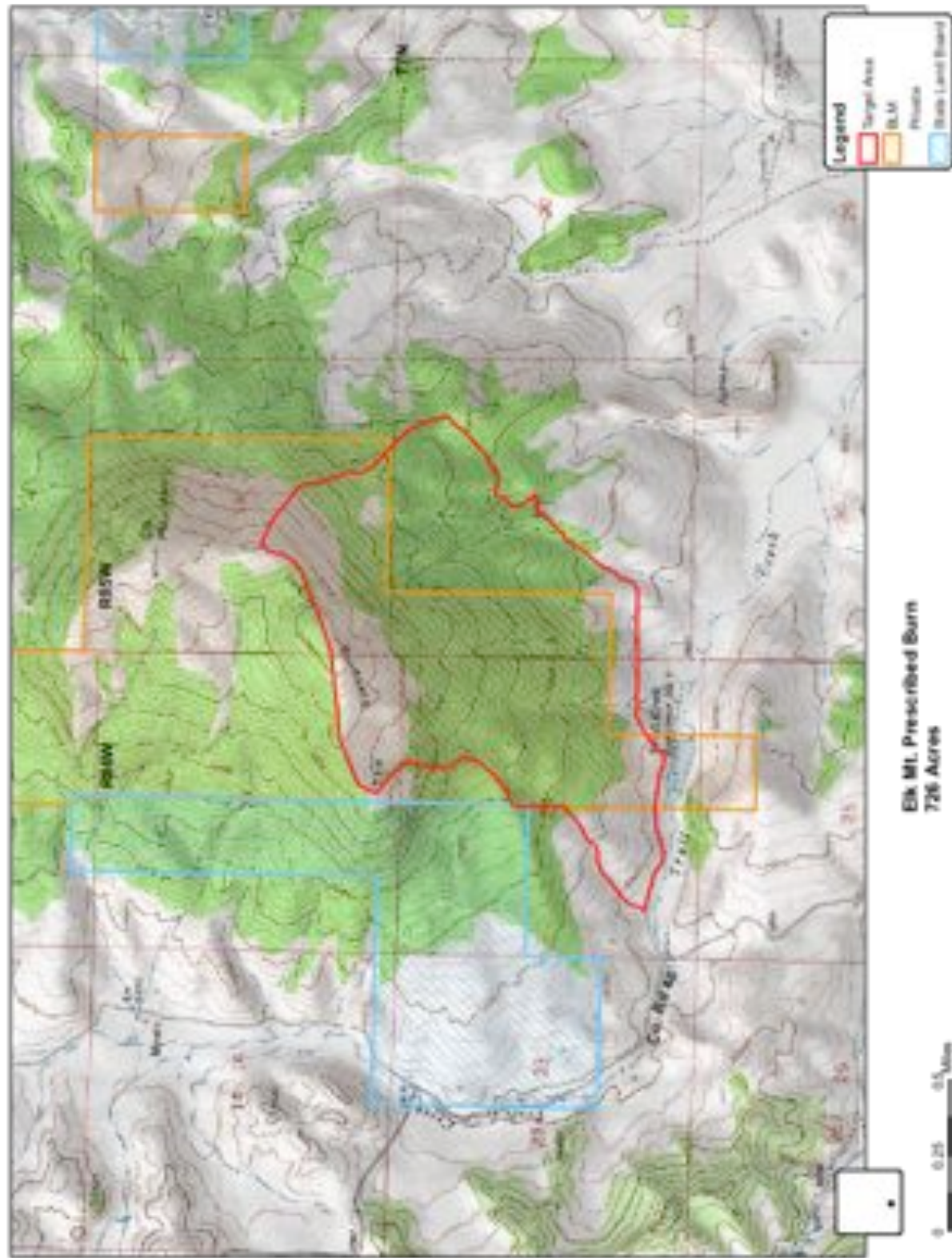
Q:\projects\dept\road\_bridge\LPP\row\lpp\row\CR.mxd



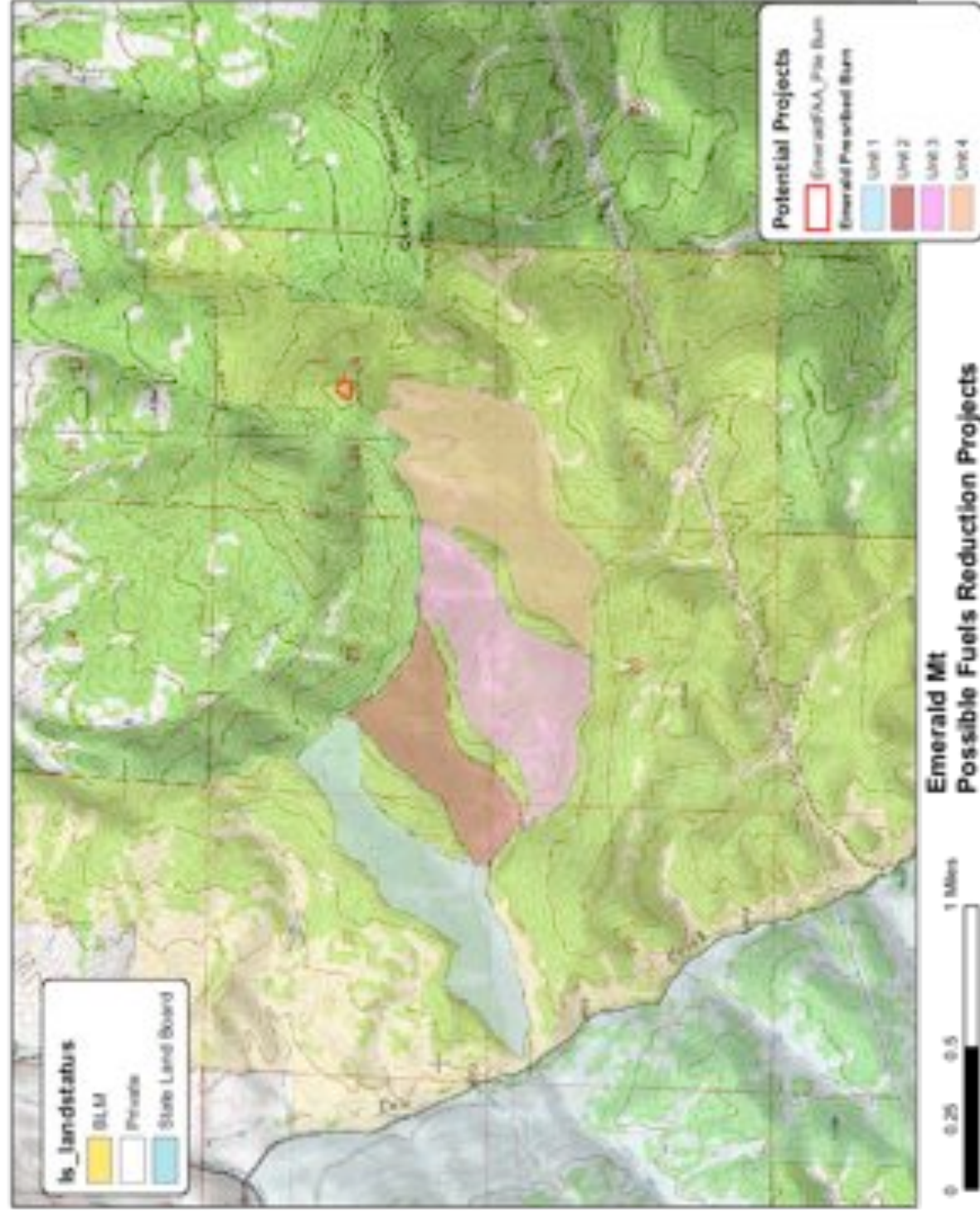






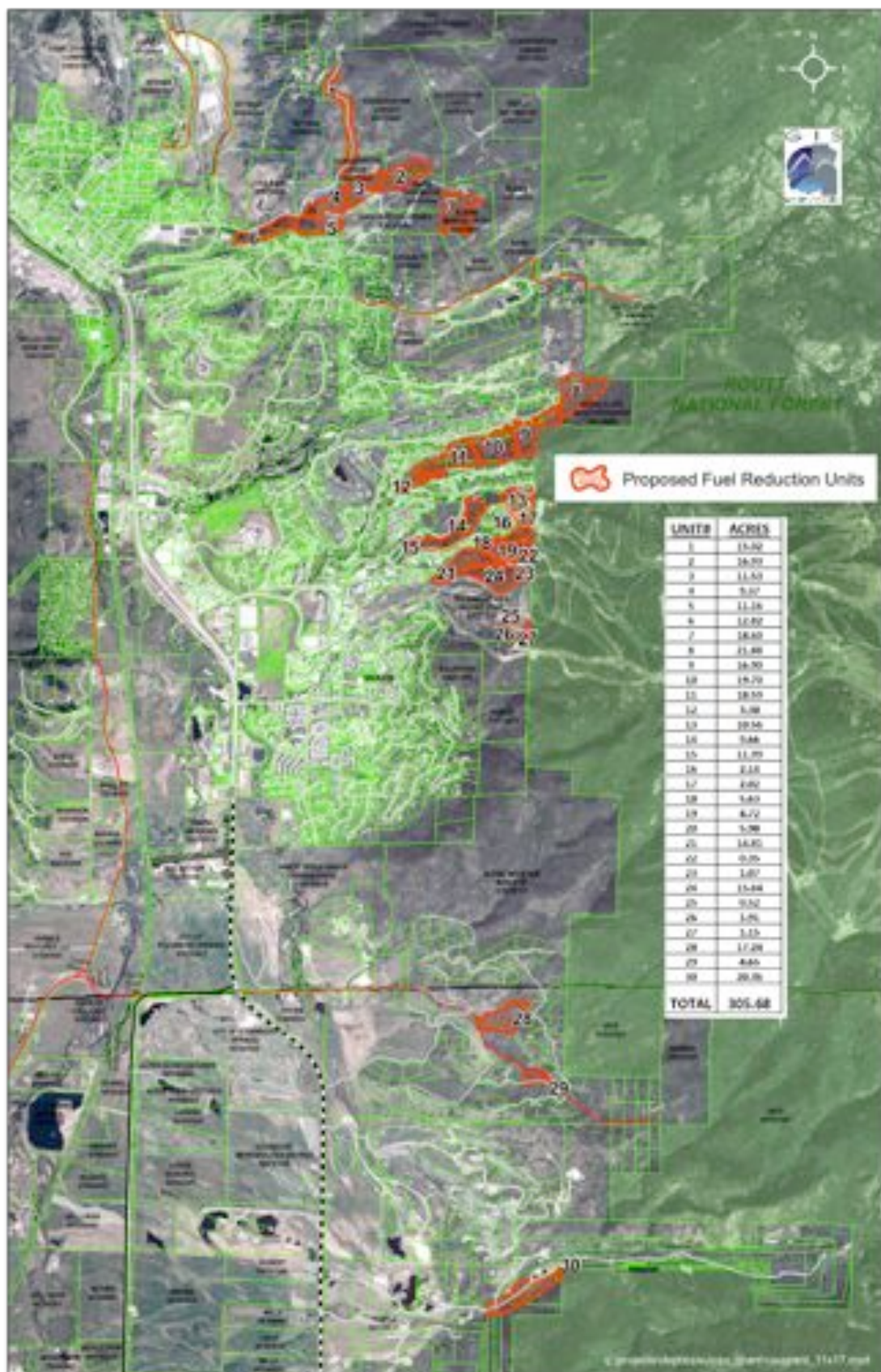














# **Routt County Community Wildfire Protection Plan**



## **Appendix B Meeting Summaries & Comments**

*September 2010*



# **Routt County CWPP**

## **Meeting Notes**

### **August 20, 2009**

---

#### **Attendees:**

Bart Brown & John Twitchell (CSFS), Bob Struble (Routt OEM), Mel Stuart (SSFR), Bob Reilley (NRFPD), Jason Striker (Routt EH), Craig Robinson (SSP&R), Lance Miles (SSRC)

#### **Discussion:**

County wide CWPP is unfunded mandate via Colorado Senate Bill 09-001. SB requires guidelines to be established by 11/15/09 by CSFS but CSFS doesn't expect any major modifications from existing guidelines. Projects "in process" will be grandfathered should major guideline changes occur. County has until 1/1/2011 to complete a fire hazard determination and complete the CWPP by 7/1/2011.

Some reasons for completing this sooner than later:

- Access to grant money for those not currently covered by CWPP
- Allows for CO state tax deduction for performance of wildfire mitigation for years 2009-2013

Several areas in Routt County are currently covered by CWPPs and will be incorporated in the county-wide plan. Existing plans include: North Routt CWPP; Fish Creek CWPP; Burgess Creek CWPP; Steamboat Pines CWPP; Stagecoach CWPP.

Had general discussion re identifying the key players to make up a core group before moving forward (Step 1 of CSFS CWPP Guidelines). Decided that the above attendees with the inclusion of USFS (Mark Cahur) and BLM (Lyn Barclay) and other fire districts would constitute this core group. Hope to also add one or two local citizens. Dave McIrvin and John Halverson were mentioned and will be asked to attend future meetings.

Decided to focus the county wide CWPP into 4 basic areas: North Routt, South Routt, West Routt and Steamboat Area utilizing the approximate boundaries of the Fire Districts

North Routt CWPP wishes to remain a stand-alone plan so whether the area in extreme N Routt will be included in the NR CWPP or as a separate section in the NR Area is TBD.

Broad county-wide priorities (no order): View sheds; recreation opportunities; utilities; watersheds and neighborhoods.

General timeframe and plan of attack: lay out basic information for each area prior to requesting additional public input on their values of importance. Public meetings may require moderator/facilitator such as Deb Alpe with Jackson County Extension.

Mark Cahur (USFS) has indicated a willingness to contribute GIS support but will need to confirm.

Completed CWPP by early 2010.

#### **Tasks:**

- John Twitchell:
  - Set up meeting with Jon Roberts, Steamboat Springs City Manager, to better explain CWPP

- Letter to SSRFPD board to inquire as to whom they would like to represent them at these meetings (due Sept 1 to Mel)
- Inquire with State for better definition of Ag burn
- Bart Brown:
  - Forward NR CWPP to Lance and Craig
  - Invite Dave McIrvin and John Halverson to next meeting
  - Determine next meeting location (USFS?)
- Lance Miles:
  - Bring areas of concern to next meeting
- Craig Robinson
  - Bring areas of concern to next meeting

**Future Topics:**

Please forward to Bart

**Next Meeting:**

Tuesday, September 15, 2009 10am-12pm @ USFS

Focus: Steamboat area priorities

---

**Core Group Contact Information** *(as of 8/20/09)*

<b>Name</b>	<b>Agency</b>	<b>Phone</b>	<b>Email</b>
Bart Brown	CSFS	970.879.0475	bartbrown2@mac.com
John Twitchell	CSFS	970.879.0475	johntw@lamar.colostate.edu
Bob Struble	OEM	970.870.5551	bstruble@co.routt.co.us
Mark Cahur	USFS	970.870.2214	mcahur@fs.fed.us
Lyn Barclay	BLM	970.826.5096	lynn_barclay@co.blm.gov
Mel Stewart	SSFR	970.879.7170	mstewart@steamboatsprings.net
Bob Reilly	NRFPD	970.879.6064	northrouttfirechief@yahoo.com
Chuck Wisecup	OCFPD	970.736.8104	ocfpd@nctelecom.net
Bryan Rickman	WRFPD	970.276.3796	westrouttchief@netscape.net
Craig Robinson	City SS	970.879.4300	crobinson@steamboatsprings.net
Lance Miles	SSRC	970.871.5317	lmiles@steamboat.com
Jason Striker	EH	970.879.0185	jstriker@co.routt.co.us

---

# **Routt County CWPP**

## **Meeting Notes**

### **September 15, 2009**

---

#### **Attendees:**

Bart Brown (CSFS), Mark Cahur (USFS), Chuck Wisecup (OCFPD), Bob Struble (Routt OEM), Scott Havener (SRFPD), Jason Striker (Routt EH), Lyn Barclay (BLM), Mel Stuart & Deb Funston (SSFR), Bob Reilley (NRFPD), Craig Robinson (SSP&R), Lance Miles & Doug Allen (SSRC), Dave McIrvin (Sanctuary CWPP)

#### **Discussion:**

Had general discussion recapping previous meeting for those not present at that meeting. County wide CWPP will be broken into 4 basic areas: North Routt, South Routt, West Routt and Steamboat Area utilizing the approximate boundaries of the Fire Districts.

Focus on today's meeting: creating rough list of priorities in the Steamboat and surrounding area.

Lyn mentioned it might be worth creating a ranking list in each area. Will leave that for public input as to create more specific rankings.

Because North Routt CWPP wants to remain separate and intact because of effort put into their plan, Bart asked Dave McIrvin if he had a preference for his (Sanctuary CWPP) plan. He did not and was ok with opening it up versus keeping separate.

As clarification, Lance questioned the level of detail needed in each area. Mark C discussed the plan being an active, changing document and that items mentioned in broad terms would be sufficient. Bob S suggested possibly referencing the Crisis Management Plan for more specifics if needed.

#### **Discussion on Areas:**

##### All Areas

Human caused fires in recreation areas; view sheds; recreation opportunities; utilities; watersheds and neighborhoods.

##### Ski Area

Utilities, infrastructure, watershed, recreational opportunities

**Priorities:** dead lodgepole, vegetation around infrastructure and utilities

Chuck Wisecup – concern about those areas we don't know about like internal plans from various subdivisions. Jim Ficke plans?

County CWPP might become a repository for all CWPPs and mitigation plans in county.

##### Fish Creek/Sanctuary Area

Existing Sanctuary CWPP

Expand boundary so that Fish Creek Res and Long Lake as reflected as priority

### Spring Creek Area

Dead lodgepole pine in Spring Creek area is priority  
Recreation trails and public signage

### Strawberry Park to Mad Creek Area

Dead trees on ROW in Strawberry Park, Buffalo Pass, Hot Springs and top of Perry Mansfield  
Habitat Plans in Mad Creek

### Emerald Mountain Area

Recreation, views, dead tree removal, utilities, FAA site, public signage due to usage  
Habitat Plans (BLM)

### Milner Area (North and South)

Acknowledge agricultural burning component  
Subdivisions and utilities

### Howelson Hill

MPB related removals

### 131 Corridor

Hazard tree removal

### 14 Corridor

Elk Mountain/Blacktail fuels (BLM)

### Catamount/US40 Area

Road hazard tree removal as well as on NF system roads  
USFS fuels project for fuels and wildlife.

These are some areas identified. Need the public to bring other concerns to the meeting

May want to place BMPs for smoke management in a section.

Group feels comfortable with moving forward with public meeting.

Utilize SS Community Center for meeting.

Possibly do an opening statement and discussion or Open House style (i.e. Roadless Meeting)

Utilize web sites (SSFR and OEM) for distributing info prior to meeting as well as making comments.  
Should be able to utilize stmibt@lamar.colostate.edu address for clearinghouse of email comments.

Web page should have an FAQ, CWPP basics and links to existing CWPPs

### **Tasks:**

- Bart Brown & Mark Cahur:
  - Create visuals/maps for meeting
- Bart Brown & Lyn Barclay:
  - Create framework for meeting
- Deb Funston
  - Determine feasibility of blog, etc for comments on SSFR site

### **Future Topics:**



Please forward to Bart

**Next Meeting:**

Public Meeting

Thursday, November 12, 2009 5pm-7pm @ Community Center

Focus: Public comment on Steamboat area

---

**Core Group Contact Information** *(as of 9/15/09)*

<b>Name</b>	<b>Agency</b>	<b>Phone</b>	<b>Email</b>
Bart Brown	CSFS	970.879.0475	bartbrown2@mac.com
John Twitchell	CSFS	970.879.0475	johntw@lamar.colostate.edu
Bob Struble	OEM	970.870.5551	bstruble@co.routt.co.us
Mark Cahur	USFS	970.870.2214	mcahur@fs.fed.us
Lyn Barclay	BLM	970.826.5096	lynn_barclay@co.blm.gov
Mel Stewart	SSFR	970.879.7170	mstewart@steamboatsprings.net
Bob Reilley	NRFPD	970.879.6064	northrouttfirechief@yahoo.com
Chuck Wisecup	OCFPD	970.736.8104	ocfpd@nctelecom.net
Bryan Rickman	WRFPD	970.276.3796	westrouttchief@netscape.net
Craig Robinson	City SS	970.879.4300	crobinson@steamboatsprings.net
Lance Miles	SSRC	970.871.5317	lmiles@steamboat.com
Jason Striker	EH	970.879.0185	jstriker@co.routt.co.us
Doug Allen	SSRC	970.879.6111	dallen@steamboat.com
Deb Funston	SSFR	970.879.0700	dfunston@steamboatsprings.net
Dave McIrvin	Sanctuary	970.870.0935	dmmcirvin@aol.com
Scott Havener	SSRFPD		havener@springsips.com

---



**Routt County CWPP  
Open House Notes/Handouts  
November 12, 2009**

---



## Steamboat Area Community Wildfire Protection Plan OPEN HOUSE



**Thursday, November 12, 5 – 7 p.m.**  
**Steamboat Springs Community Center**

A wildfire protection plan contains recommendations to address local wildfire protection concerns organized as a realistic goal-plan including:

- Maps
- Risk assessments
- Wildfire history
- Fuel hazards and mitigation plan(s)
- Evacuation information and more

Public participation is crucial to the success of the plan. Information provided by individuals will aid in planning future hazardous fuel reduction projects and improving emergency response. When attending the meeting be prepared to:

- Ask questions
- Offer comments
- Identify areas that could be at risk to wildfire
- Identify needs such as: road signage, easily identifiable addressing

There will be two presentations to discuss Community Wildfire Protection Plans (CWPP) and the planning process at 5:30 and 6:30 p.m. Representatives from the United States Forest Service, Steamboat Ski Corporation, Bureau of Land Management, Rout County Fire Chiefs, and Home Owner Associations from The Sanctuary and Burgess Creek will be available to share information.

• Visit [http://steamboatsprings.net/departments/public\\_safety/fire\\_department/daily\\_dispatch/community\\_wildfire\\_protection\\_plan](http://steamboatsprings.net/departments/public_safety/fire_department/daily_dispatch/community_wildfire_protection_plan) to learn more about Community Wildfire Protection Plans and view completed plans from other communities.

This is a public project supported by Steamboat Fire Rescue, Rout County, City of Steamboat Springs, Colorado State Forest Service, United States Forest Service, and Bureau of Land Management.

For more information call: Colorado State Forest Service at 970-879-0475, Steamboat Springs Fire Rescue at 970-879-7170, or The Rout County Office of Emergency Management at (970) 870-5549.

## Routt County firefighters seek help with community plan

By [Zach Finkel](#)

Thursday, November 12, 2009

### If you go

An open house to discuss the Steamboat Area Community Wildfire Protection Plan is from 5 to 7 p.m. today with presentations at 5:30 and 6:30 p.m. at the Steamboat Springs Community Center. Anyone interested can learn about the project and suggest areas of concern as the plan is developed.

For more information, call the Colorado State Forest Service at 879-6675, Steamboat Springs Fire Rescue at 879-7170 or the Routt County Office of Emergency Management at 870-5549, or [click here](#).

**Steamboat Springs** — The firefighters and forest managers of Routt County are requesting residents' help to develop a wildfire protection plan for the Steamboat Springs area.

Fire experts are seeking input about topics from road signs to defensible space as they begin creating a Community Wildfire Protection Plan.

Lynn Barclay, spokesman for the Northwest Colorado Fire Management Unit, said this is part of an ongoing process that will be updated annually to address the area's needs.

As a part of the Healthy Forests Restoration Act of 2003 and a Colorado Senate bill, all counties are required to have a plan in place by July 2011. Barclay said the first version of the plan likely will be created in less than eight months, with updates each year after that.

Today's meeting also is the first step in combining local plans for North Routt County, Stagecoach and the Sanctuary and Burgess Creek neighborhoods into one umbrella plan for the county.

Steamboat Springs Fire Chief Ron Lindroth, who worked on creating a Community Wildfire Protection Plan in Larimer County, said the plan is a general structure for fire prevention efforts.

"It's a broad brush stroke of what the community values and how we want to approach it and make sure those values are in place when we look at wildfire protection," he said.

That can include anything from the land management policies at Steamboat Ski Area — a representative from Steamboat Ski and Resort Corp. will be at the presentation — to whether a neighborhood prefers tree thinning to clear-cut fire spaces.

The open house, at the Steamboat Springs Community Center, is scheduled from 5 to 7 p.m. with presentations at 5:30 and 6:30 p.m.

Barclay said it also is important to create the community plan so local groups can be eligible for federal funding.

The plan is being shepherded by the city of Steamboat Springs, Routt County and the Colorado State Forest Service with support from the U.S. Forest Service and the Bureau of Land Management.

## Steamboat Area CWPP Open House

### Schedule of Events

5:00 - 7:00 Open House (visit, interact, question, and comment)

5:30 & 6:30pm CWPP Presentation

### What is a CWPP?

A CWPP is a Community Wildfire Protection Program. They are part of the Healthy Forests Restoration Act of 2003. CWPPs are community based plans that discuss local interests and concerns regarding public safety, community sustainability, natural resources and how the community will reduce wildland fire. Additionally these plans outline those focus/priority areas of concern as well as solutions/projects (e.g. firefighting capability, defensible space, etc).

### Why a CWPP?

In addition to the benefits mentioned below, Colorado Senate Bill 09-001 sets forth that by July 2011 each county will have a CWPP established for the purpose of addressing the wildfire issues/wildfire areas. In order to better manage the vast and diverse areas in Routt County, the Steamboat Area will be one of four sections in a greater countywide CWPP.

### Existing CWPPs in Routt County

Several communities have already gathered, discussed, and created CWPPs for their specific areas. The existing plans within Routt county are:

- North Routt
- Steamboat Pines
- Burgess Creek
- Sanctuary
- Stagworthy Area

All of these CWPPs will be incorporated into the Routt County CWPP.



### What are the Benefits?

- A CWPP allows the community to take the lead on priority setting for its own protection.
- CWPPs help establish and give priority to those projects that protect at-risk communities or watersheds.
- Many grant opportunities are now tied to established CWPPs.
- House Bill 08-110 establishes an income tax deduction for costs associated with wildfire protection measures during 2009-2013. However, the deduction is only valid for those areas that have a CWPP.

### How can you help?

As a community member, we need your input on identifying those areas of importance and risk to wildfire.

Please visit the different areas to ask questions, interact and comment on those areas of concern you may have.

Some considerations (no particular order):

- Human caused fires
- View sheds
- Recreational opportunities (Ski Area, Spring Creek, Emerald ME)
- Utilities/infrastructure (powerlines, etc)
- Watersheds (Fish Creek)
- Neighborhoods and defensible space
- Dead trees along right-of-ways and recreational areas

### Tonight's Area of Focus



*Steamboat Springs and Surrounding Area*

### Comments

Public comments and participation is key to making this plan a success. Please comment on your areas of concern via the forms located throughout this venue. Should you have additional comments following this or future meetings, please utilize the following email address:

[steamboat@lamar.colostate.edu](mailto:steamboat@lamar.colostate.edu)



SIGN-IN SHEET  
Steamboat Area Community Wildfire Protection Plan

Thursday, November 12, 2009

Name & Affiliation (PLEASE PRINT)	Address	Phone/Fax/Email
Dan McLean Garrison County	3232 Aspen Valley St. Louis	870-0935
Linda McLean	"	"
Erny Ransburg - Routt County		870-5465
Bob Stubble - ROUTT		870-5651
T.J. Brady	486 Cherry Drive St. Louis	208-870-4142
James Kinsbury Routt National Forest	4700 Broadway Routt National Forest	970-870-2115
Wanda T. McQuinn	47 Parkview Drive Routt	846-4705
Laura Blakey	P.O. Box 776104 - Steamboat Spring, CO 80477	871-7073
Chris Wilson	City of Steamboat Springs	879-4300



Comment Form  
For  
Steamboat Area Community Wildfire Protection Plan

Name: T.J. Bealy Phone: 970 476 4444 Email: tjbealy@gmail.com  
Address: 566 County Dr. 1st fl.  
Affiliation (if any, business, teaching, etc.): Resident Date: 10/12/12

(Example of informative comment: Area Sanctuary Comment/concern: Create fuelbreak along back side of houses/dead trees need to be removed around homes and roads/not all roads are signed/area around power line needs to be cleared of shrubs and trees etc.)

I attended tonight's meeting to gain further information concerning Steamboat's plan of action if/when a wildfire incident occurs. As a former wildland firefighter for the U.S. Forest Service and current resident of Steamboat, I wanted to see what steps have been taken by emergency services, state + federal agencies, and local property/homeowners in developing ways to mitigate wildfires and properly handle any future incidents. I look forward to seeing this process unfold. Please keep me posted w/ any further information. Thanks for taking steps in the right direction.

Comments can be emailed to: [steamboat@lamar.colostate.edu](mailto:steamboat@lamar.colostate.edu) or mailed to:

Steamboat Area CWPP, Colorado State Forest Service, PO Box 771657, Steamboat Springs, CO 80477

Comment Form  
For  
Steamboat Area Community Wildfire Protection Plan

Name: Linda McTevin Phone: 970-233-1111 Email: Linda.McTevin@montana.com  
Address: 1111 Aspen Wood Lane  
Affiliation (PCA, Recreation, Ranching, etc.): PCA - Aspen Wood Lane Date: 2/15/19

(Example of informative comment: Area/Sanctuary Comment/concern: Create firebreak along back side of houses/dead trees need to be removed around homes and roads/not all roads are signed/area around power line needs to be cleared of shrubs and trees etc.)

Sanctuary 2 - remove dead trees, boulders along ridge of residential area, help to clear place by ~~clear~~ Aspen Wood Lane/Steamboat Mesa. Area of study, trees were removed and fire break. As member of Ashcroft and Central Committee, and accessible to comments regarding environmental nature of open process, concern is preservation of open space in Ridge Preservation Area & Ridge Preservation Area. Minimizing logging secondary damage.

Comments can be emailed to: [steamboat@colorado.state.gov](mailto:steamboat@colorado.state.gov) or mailed to:

Steamboat Area CWPP, Colorado State Forest Service, PO Box 773657, Steamboat Springs, CO 80477

Comment Form  
For  
Steamboat Area Community Wildfire Protection Plan

Name: Dan McLean Phone: 870 6935 Email: danm@241.com  
Address: 25th Avenue NW  
Affiliation (RSA, Association, Ranching, etc.): Sanctuary Dwell Date: 1/16/20

(Example of informative comment: Area Sanctuary Comment/concern: Create firebreak along back side of houses/dead trees need to be removed around homes and roads/not all roads are signed/area around power line needs to be cleared of shrubs and trees etc.)

This is such a vital experience to living in Silt. I feel  
lucky to live here and learn from some of the best  
of experts from the state, the west, country, city  
and others in this fine community.  
Once fire season begins  
again, will share.

Amber

Comments can be emailed to: [steamboat@kenai.colostate.edu](mailto:steamboat@kenai.colostate.edu) or mailed to:

Steamboat Area CWPP, Colorado State Forest Service, PO Box 773457, Steamboat Springs, CO 80477



# **Routt County CWPP**

## **Meeting Notes**

### **December 9, 2009**

---

#### **Attendees:**

Bart Brown & John Twitchell (CSFS), Mark Cahur (USFS), Bob Struble (Routt OEM), Jason Striker & Mike Zopf (Routt EH), Lynn Barclay & Gina Robison (BLM), Layton White & Ron Lindroth (SSFR), Bob Reilley (NRFPD), Lance Miles (SSRC), Emy Parmley (Routt GIS),

#### **Discussion:**

Lack of turnout at the Open House. Press did not do the group any favors by getting the word out at most 1 day prior. While the press had the information for 2 weeks the radio station (KRAI) ran the story the day before and the Steamboat Pilot ran the story the day of the meeting. Will try and get a better targeted plan prior to the next public meeting.

Some people had concerns regarding the new CWPP guidelines from the CSFS. New guidelines require projects. Bob S asked if there was a 3 of projects required. John T interprets there is no set number. Projects were a guideline before and a standard now. Also concern that the signatories to the plan were at the state level versus local. John believes it is still at the local level.

Emy had questions/clarifications on what analysis should be done. Discussion occurred by all parties. For now a structure density analysis will be done and others TBD at a later date.

#### **Tasks:**

- Bart, Emy, Mark C:
  - Maps to be created
    - Known projects
    - Fuel hazards
    - Structure density analysis
    - Basic watershed map
    - County map with existing CWPPs and Steamboat area
- All parties
  - Forward **brief** projects summaries to Bart
- Bart Brown:
  - Begin assembling draft plan

#### **Future Topics:**

Please forward to Bart

#### **Next Meeting:**

Not set. Probably additional core group meeting prior to public meeting (late Jan early Feb)

---

**Core Group Contact Information** *(as of 12/10/09)*

<b>Name</b>	<b>Agency</b>	<b>Phone</b>	<b>Email</b>
Bart Brown	CSFS	970.879.0475	bartbrown2@mac.com
John Twitchell	CSFS	970.879.0475	johntw@lamar.colostate.edu
Bob Struble	OEM	970.870.5551	bstruble@co.routt.co.us
Mark Cahur	USFS	970.870.2214	mcahur@fs.fed.us
Lynn Barclay	BLM	970.826.5096	lynn_barclay@co.blm.gov
Mel Stewart	SSFR	970.879.7170	mstewart@steamboatsprings.net
Bob Reilley	NRFPD	970.879.6064	northrouttfirechief@yahoo.com
Chuck Wisecup	OCFPD	970.736.8104	ocfpd@nctelecom.net
Bryan Rickman	WRFPD	970.276.3796	westrouttchief@netscape.net
Craig Robinson	City SS	970.879.4300	crobinson@steamboatsprings.net
Lance Miles	SSRC	970.871.5317	lmiles@steamboat.com
Jason Striker	EH	970.879.0185	jstriker@co.routt.co.us
Doug Allen	SSRC	970.879.6111	dallen@steamboat.com
Deb Funston	SSFR	970.879.0700	dfunston@steamboatsprings.net
Dave McIrvin	Sanctuary	970.870.0935	dmmcirvin@aol.com
Scott Havener	SSRFPD		havener@springsips.com
Kathy Connell	SSRFPD		kconnell@resortgroup.com
Ron Lindroth	SSFR	970.879.0700	rlindroth@steamboatsprings.net
Emy Parmley	Routt GIS	970.870.5465	EParmley@co.routt.co.us



**North Routt Fire Protection District Meeting**  
**Annual Meeting**  
**June 5, 2010**

---

Progress on the Routt County CWPP was discussed with those in attendance at the annual North Routt FPD annual meeting. No specific comments were received.



# NORTH ROUTT FIRE PROTECTION DISTRICT 2010 ANNUAL BREAKFAST MEETING

Saturday, June 5, 2010  
8:00 to 11:00 a.m.  
Station 2

## SIGN-IN SHEET

NAME	PHONE & E-MAIL
Tiffanie Cook	879-9411
<sup>Jermah</sup> Etton Beach	1-83-986-3730
Dan Moss	879-5477 dmoss@utop.edu
MIKE ZUCKERMAN	870-8104
K. Buh	819-6555
Scott Anderson	870-9272 gthttdw5l@gmail.com
Bob Perryman - Fireman	870-4311 southcoastfirechief@yahoo.com
Gloria & Bob Hamilton	870-5345
Ken & John Black	870-6106
Mike Swinick	
Dan Crane	
Bob Struble	846-1552 bstruble@searouth.com
Mark & Xena Buh	879-1564 MxBuhke@gmail.com
Danley Kentopp	303-297-4311 danley@texas.com
Marlene Kentopp	" "
Chuck & DJ Vale	970-879-3850

# **NORTH ROUTT FIRE PROTECTION DISTRICT** **2010 ANNUAL BREAKFAST MEETING**

Saturday, June 5, 2010  
8:00 to 11:00 am  
Station 2

## **SIGN-IN SHEET**

NAME	PHONE & E-MAIL
Quentin & Alice Peters	970-434-7379
Greg & Dan Thompson & Kids	970-870-1406 - happyem830@yahoo
Frank & Sandra Jones	870-0476
John Truchetti	—
Greg Murray	—
Leslie Longene	970-879-5710 leslie@kveja.org
Jeff & Susan	870-6185 jfwebb@att.com
Loanne Wagner	819-0867
John & Diane Moore	870-9317
Colleen Jones	—
Jerry & Shelley Stanford	879 1855 jstanford@gmail

# **Routt County CWPP**

## **Meeting Notes**

### **June 22, 2010**

---

#### **Attendees:**

Bart Brown (CSFS), Mark Cahur (USFS), Bob Struble (Routt OEM), Lynn Barclay (BLM), Ron Lindroth, Christopher George, Matt Workman, Matt Bernstein, Tim Baldwin, Brian McGovern (SSFR)

#### **Discussion/Tasks/Modifications:**

- Quick overview of CWPP for new SSFR staff.
- Discussion on stats mentioned on page 12. Decided to leave because it shows need/concern that not all fires are lightning caused.
- Add meeting discussion re county-wide plan at North Routt FPD Annual Meeting. No comments received at that time.
- Lynn suggested incorporating BLM projects into Emerald Mt Section.
- USFS firewood permits removing fuels up and down boundary in Steamboat Area.
- ARRA projects: update list.
- Page 27: Bob S to get square miles of districts to Bart.
- Maybe add more verbiage to Steamboat Area.
- Settlement ponds around Mt Werner Water a concern as well as Stillwater Res area.
- High hazard dams in county from Bob S to Bart.
- Many activities have multiple benefits such as wildlife habitat.
- Morrison Creek Project in South Routt (from USFS).
- Possibly change Project Summary section by geographic region.
- Add Leighton White to Core Group list.

#### **Future:**

Modify existing draft before having a public meeting in late July and wrapping up project. Place drafts on web site and get with Deb re. a possible blurb in the newspaper.

#### **Next Meeting:**

Late July - TBD

---

**Core Group Contact Information** *(as of 6/22/10)*

<b>Name</b>	<b>Agency</b>	<b>Phone</b>	<b>Email</b>
Bart Brown	CSFS	970.879.0475	bartbrown2@mac.com
John Twitchell	CSFS	970.879.0475	johntw@lamar.colostate.edu
Bob Struble	OEM	970.870.5551	bstruble@co.routt.co.us
Mark Cahur	USFS	970.870.2214	mcahur@fs.fed.us
Lynn Barclay	BLM	970.826.5096	lynn_barclay@co.blm.gov
Mel Stewart	SSFR	970.879.7170	mstewart@steamboatsprings.net
Bob Reilley	NRFPD	970.879.6064	northrouttfirechief@yahoo.com
Chuck Wisecup	OCFPD	970.736.8104	ocfpd@nctelecom.net
Bryan Rickman	WRFPD	970.276.3796	westrouttchief@netscape.net
Craig Robinson	City SS	970.879.4300	crobinson@steamboatsprings.net
Lance Miles	SSRC	970.871.5317	lmiles@steamboat.com
Jason Striker	EH	970.879.0185	jstriker@co.routt.co.us
Doug Allen	SSRC	970.879.6111	dallen@steamboat.com
Deb Funston	SSFR	970.879.0700	dfunston@steamboatsprings.net
Dave McIrvin	Sanctuary	970.870.0935	dmmcirvin@aol.com
Scott Havener	SSRFPD		havener@springsips.com
Kathy Connell	SSRFPD		kconnell@resortgroup.com
Ron Lindroth	SSFR	970.879.0700	rlindroth@steamboatsprings.net
Emy Parmley	Routt GIS	970.870.5465	EParmley@co.routt.co.us
Leighton White	SSFS	970.879.0700	lw@leightonwhite.com

# **Routt County CWPP**

## **Meeting Notes**

### **July 22, 2010**

---

#### **Attendees:**

Bart Brown & Mary Griffin (CSFS), Sam Duerksen (USFS), Bob Struble & Cheryl Dalton (Routt OEM), Lynn Barclay (BLM), Ron Lindroth (SSFR), Chuck Wisecup & Chris Zuschlag (OCFPD), Bob Reilley and Susan Marshall (NRFPD), Dave Bustos (RCSO), Nancy Stahoviak (RC Commissioner), Dan Allen (YFPD)

#### **Discussion/Tasks/Modifications:**

Bart gave quick update on the progress and status of plan: Updates from last meeting were completed - most notably the future projects and new appendix section for ease in adding annual updates.

Bart asked about the need to keep the Routt County Fire Plan in the Appendix because of size. All decided to keep in the document.

Lynn reminded the group that grant money exists for future risk assessments, etc if needed.

Bart mentioned the previous attempts at public comment and involvement and lack thereof. Group decided to place draft on Routt County's web site and hopefully CSFS and SSFR as well to see if any additional public comments will be received. Routt County will have a media event on Monday July 26 and will mention draft plan.

#### **Tasks/Modifications:**

- Add a comment about communication towers in the Infrastructure Section.
- Bob S will provide tower map when completed to add to plan.
- Chuck W. will provide photos and paragraph about OCFPD grant and progress.
- Add Phippsburg water supply to Table 1.
- Add David Blackstun as signatory for BLM
- Add middle initial "J" to Nancy Stahoviak
- Add paragraph re BLM and USFS fire capability/involvement

#### **Future:**

Modify plan with above items. Bart will coordinate with CSFS, SSFR and RC to get draft on web next week when media briefing occurs. If any additional public comments are received, add them to the plan. Go before Commissioners in probably Sept for final signatures.

#### **Next Meeting:**

None scheduled

---

**Core Group Contact Information** *(as of 7/22/10)*

<b>Name</b>	<b>Agency</b>	<b>Phone</b>	<b>Email</b>
Bart Brown	CSFS	970.879.0475	bartbrown2@mac.com
John Twitchell	CSFS	970.879.0475	johntw@lamar.colostate.edu
Bob Struble	OEM	970.870.5551	bstruble@co.routt.co.us
Mark Cahur	USFS	970.870.2214	mcahur@fs.fed.us
Lynn Barclay	BLM	970.826.5096	lynn_barclay@co.blm.gov
Mel Stewart	SSFR	970.879.7170	mstewart@steamboatsprings.net
Bob Reilley	NRFPD	970.879.6064	northrouttfirechief@yahoo.com
Chuck Wisecup	OCFPD	970.736.8104	ocfpd@nctelecom.net
Bryan Rickman	WRFPD	970.276.3796	westrouttchief@netscape.net
Craig Robinson	City SS	970.879.4300	crobinson@steamboatsprings.net
Lance Miles	SSRC	970.871.5317	lmiles@steamboat.com
Jason Striker	EH	970.879.0185	jstriker@co.routt.co.us
Doug Allen	SSRC	970.879.6111	dallen@steamboat.com
Deb Funston	SSFR	970.879.0700	dfunston@steamboatsprings.net
Dave McIrvin	Sanctuary	970.870.0935	dmmcirvin@aol.com
Scott Havener	SSRFPD		havener@springsips.com
Kathy Connell	SSRFPD		kconnell@resortgroup.com
Ron Lindroth	SSFR	970.879.0700	rlindroth@steamboatsprings.net
Dan Allen	YFPD		fire5three@hotmail.com
Emy Parmley	Routt GIS	970.870.5465	EParmley@co.routt.co.us
Leighton White	SSFS	970.879.0700	lw@leightonwhite.com



[Sign in](#)
[Create account](#)
[Help](#)

[Email](#)
[Mobile](#)
[Sign in](#)
[Create account](#)
[Help](#)

Tuesday, July 27, 2015  
 11:27 a.m. EDT

70°  
 Partly

---

[Home](#)
[Sports](#)
[Business](#)
[Education](#)
[Multimedia](#)
[Entertainment](#)
[Health](#)
[Environment](#)
[More](#)
[Subscribe](#)

---

Today's news

Photo by [John F. Nunez](#)

John Turchetti, district leader for the Colorado State Forest Service, talks about fire about the community wildfire plan during Monday's commissioners meeting. Cheryl Caffery, emergency management administrative assistant for the county, also attended the meeting.

## Routt County prepares for wildfires

### Commissioners accept wildfire protection plan draft Monday

By [Curtis R. Nunez](#) Tuesday, July 27, 2015

[Print](#)
[Comment](#)

[Email a friend](#)
[Facebook](#)
[Twitter](#)
[LinkedIn](#)

[More sharing options](#)

DOCUMENT

[Advertisement](#)

## North County Wildlife Protection Plan

### North County Community Wildlife Protection Plan



#### Download PDF

**Steamboat Springs** – If a wildfire of the magnitude of the Horizon or Big Flat fires of 2002 ever strikes North County again, firefighters will have more information at hand to help guide decisions about how to employ their assets in accordance with community goals.

The North County Board of Commissioners accepted a draft of the North County Community Wildlife Protection Plan on Monday in the form of a felony three-ring binder.

"If there ever is a fire like that, the fire team is going to want to look at this," John Tutchell, of the Colorado State Forest Service, told the commissioners. "It details evacuation systems, and that's important to the fire team. And it identifies key assets to protect. The Hater's Peak Wildlife District, for example, that most people won't protect."

Tutchell gave credit to his colleague, Earl Brown, for his extensive work on the plan, but he added that his agency acted in a consulting role to focus fire protection districts to support the development of a plan that took that particular needs into account.

Commissioner Doug Menger said the involvement of emergency and fire officials from Oak Creek, North Fork, West Fork and Steamboat Springs, along with local, state and federal government was important.

"The plan has the flexibility to allow different fire districts to plan for their needs and focus on their issues," Menger said.

At the same time, the plan is consistent with the overarching federal Healthy Forest Restoration Act of 2003 and Colorado law passed in 2009 that calls for the creation of County Community Wildlife Protection Plans.

Commissioner Clark Mitchell Smith pointed out that people in North Fork particularly are concerned about the amount of dead timber in a roadless area along Willow Creek and the challenge of removing that potential fuel for a wildfire.

Tutchell said the broader plan has accomplished things the fire districts cannot do by themselves, such as filing in critical information about conditions between the North Fork District and the Wyoming state line, where there are buildings and widely scattered people pursuing recreation.

The draft North County Community Fire Protection Plan puts the county well ahead of its neighbors, Tutchell said, by providing an overview of wildland fuel conditions, ways to reduce the potential impacts of a wildland fire and by recommending strategies.

Orlando DeLeon, of North County Emergency Management, said the goal of the team working on the plan is to present it in its final form by mid-September.

#### Comments

Use the comment form below to begin a discussion about this content.

#### Post a comment (Requires free registration)

Posting comments requires a free account and verification.

[Log in](#)  
[Register](#)

#### More like this

- [North County firefighters ready for last decade](#) Nov 27, 2013
- [Snow Shovel, Shovel, shovel](#) October 11, 2013
- [Fire, believe it or not, is leading in Steamboat](#) November 14, 2012
- [Fighting back the forest](#) July 19, 2012
- [But no wildfire yet](#) November 14, 2012



# **Routt County Community Wildfire Protection Plan**

## **Appendix C Related Information**



*September 2010*



NOTE: This bill has been prepared for the signature of the appropriate legislative officers and the Governor. To determine whether the Governor has signed the bill or taken other action on it, please consult the legislative status sheet, the legislative history, or the Session Laws.



SENATE BILL 09-001

BY SENATOR(S) Gibbs and Penry, Kopp, Bacon, Boyd, Carroll M., Foster, Groff, Harvey, Heath, Hodge, Kester, King K., Lundberg, Morse, Newell, Romer, Scheffel, Schwartz, Shaffer B., Tapia, Tochtrop, White, Williams;  
also REPRESENTATIVE(S) Scanlan and King S., Baumgardner, Carroll T., Curry, Fischer, Frangas, Geros, Kerr J., Labuda, Levy, Massey, Niekel, Pace, Roberts, Stephens, Tipton, Todd.

CONCERNING THE ESTABLISHMENT OF COMMUNITY WILDFIRE PROTECTION  
PLANS BY COUNTY GOVERNMENTS.

*Be it enacted by the General Assembly of the State of Colorado:*

**SECTION 1.** Part 3 of article 31 of title 23, Colorado Revised Statutes, is amended BY THE ADDITION OF A NEW SECTION to read:

**23-31-312. Community wildfire preparedness plans - county governments - guidelines and criteria - legislative declaration - definitions.** (1) (a) THE GENERAL ASSEMBLY HEREBY FINDS, DETERMINES, AND DECLARES THAT:

(I) COMMUNITY WILDFIRE PROTECTION PLANS, OR CWPPs, ARE AUTHORIZED AND DEFINED IN SECTION 101 OF TITLE I OF THE FEDERAL

*Capital letters indicate new material added to existing statutes; dashes through words indicate deletions from existing statutes and such material not part of act.*

"HEALTHY FORESTS RESTORATION ACT OF 2003", Pub.L. 108-148, REFERRED TO IN THIS SECTION AS "HFRA". TITLE I OF HFRA AUTHORIZES THE SECRETARIES OF AGRICULTURE AND THE INTERIOR TO EXPEDITE THE DEVELOPMENT AND IMPLEMENTATION OF HAZARDOUS FUEL REDUCTION PROJECTS ON FEDERAL LANDS MANAGED BY THE UNITED STATES FOREST SERVICE AND THE BUREAU OF LAND MANAGEMENT WHEN THESE AGENCIES MEET CERTAIN CONDITIONS. HFRA EMPHASIZES THE NEED FOR FEDERAL AGENCIES TO WORK COLLABORATIVELY WITH LOCAL COMMUNITIES IN DEVELOPING HAZARDOUS FUEL REDUCTION PROJECTS, PLACING PRIORITY ON TREATMENT AREAS IDENTIFIED BY THE LOCAL COMMUNITIES THEMSELVES IN A CWPP. THE WILD LAND-URBAN INTERFACE AREA IS ONE OF THE IDENTIFIED PROPERTY AREAS THAT QUALIFY UNDER HFRA FOR THE USE OF THIS EXPEDITED ENVIRONMENTAL REVIEW PROCESS.

(II) THE DEVELOPMENT OF A CWPP CAN ASSIST A LOCAL COMMUNITY IN CLARIFYING AND REFINING ITS PRIORITIES FOR THE PROTECTION OF LIFE, PROPERTY, AND CRITICAL INFRASTRUCTURE IN ITS WILD LAND-URBAN INTERFACE AREA. THE CWPP BRINGS TOGETHER DIVERSE FEDERAL, STATE, AND LOCAL INTERESTS TO DISCUSS THEIR MUTUAL CONCERNS FOR PUBLIC SAFETY, COMMUNITY SUSTAINABILITY, AND NATURAL RESOURCES. THE CWPP PROCESS OFFERS A POSITIVE, SOLUTION-ORIENTED ENVIRONMENT IN WHICH TO ADDRESS CHALLENGES SUCH AS LOCAL FIRE-FIGHTING CAPABILITY, THE NEED FOR DEFENSIBLE SPACE AROUND HOMES AND HOUSING DEVELOPMENTS, THE EFFECT OF FIRE RATINGS AND COMBUSTIBILITY STANDARDS FOR BUILDING MATERIALS USED IN WILD LAND-URBAN INTERFACE AREAS, AND WHERE AND HOW TO PRIORITIZE LAND MANAGEMENT ON BOTH FEDERAL AND NONFEDERAL LANDS. CWPPS CAN BE AS SIMPLE OR COMPLEX AS A LOCAL COMMUNITY DESIRES.

(III) THE ADOPTION OF A CWPP BRINGS MANY BENEFITS TO THE STATE AND ADOPTING LOCAL COMMUNITY, INCLUDING:

(A) THE OPPORTUNITY TO ESTABLISH A LOCALLY APPROPRIATE DEFINITION AND BOUNDARY FOR THE WILD LAND-URBAN INTERFACE AREA;

(B) THE ESTABLISHMENT OF RELATIONS WITH OTHER STATE AND LOCAL GOVERNMENT OFFICIALS, LOCAL FIRE CHIEFS, STATE AND NATIONAL FIRE ORGANIZATIONS, FEDERAL LAND MANAGEMENT AGENCIES, PRIVATE HOMEOWNERS, ELECTRIC, GAS, AND WATER UTILITY PROVIDERS IN THE SUBJECT AREA, AND COMMUNITY GROUPS, THEREBY ENSURING

COLLABORATION AMONG THESE GROUPS IN INITIATING A PLANNING DIALOGUE AND FACILITATING THE IMPLEMENTATION OF PRIORITY ACTIONS ACROSS OWNERSHIP BOUNDARIES;

(C) SPECIALIZED NATURAL RESOURCE KNOWLEDGE AND TECHNICAL EXPERTISE RELATIVE TO THE PLANNING PROCESS, PARTICULARLY IN THE AREAS OF GLOBAL POSITIONING SYSTEMS AND MAPPING, VEGETATION MANAGEMENT, ASSESSMENT OF VALUES AND RISKS, AND FUNDING STRATEGIES; AND

(D) STATEWIDE LEADERSHIP IN DEVELOPING AND MAINTAINING A LIST OR MAP OF COMMUNITIES AT RISK WITHIN THE STATE AND FACILITATING WORK AMONG FEDERAL AND LOCAL PARTNERS TO ESTABLISH PRIORITIES FOR ACTION.

(IV) CWPPs GIVE PRIORITY TO PROJECTS THAT PROVIDE FOR THE PROTECTION OF AT-RISK COMMUNITIES OR WATERSHEDS OR THAT IMPLEMENT RECOMMENDATIONS IN THE CWPP.

(V) CWPPs ASSIST LOCAL COMMUNITIES IN INFLUENCING WHERE AND HOW FEDERAL AGENCIES IMPLEMENT FUEL REDUCTION PROJECTS ON FEDERAL LANDS, HOW ADDITIONAL FEDERAL FUNDS MAY BE DISTRIBUTED FOR PROJECTS ON NONFEDERAL LANDS, AND IN DETERMINING THE TYPES AND METHODS OF TREATMENT THAT, IF COMPLETED, WOULD REDUCE THE RISK TO THE COMMUNITY.

(VI) THE DEVELOPMENT OF CWPPs PROMOTES ECONOMIC OPPORTUNITIES IN RURAL COMMUNITIES.

(b) BY ENACTING THIS SECTION, THE GENERAL ASSEMBLY INTENDS TO FACILITATE AND ENCOURAGE THE DEVELOPMENT OF CWPPs IN COUNTIES WITH FIRE HAZARD AREAS IN THEIR TERRITORIAL BOUNDARIES AND TO PROVIDE MORE STATEWIDE UNIFORMITY AND CONSISTENCY WITH RESPECT TO THE CONTENT OF CWPPs IN COUNTIES NEEDING PROTECTION AGAINST WILDFIRES.

(2) AS USED IN THIS SECTION, UNLESS THE CONTEXT OTHERWISE REQUIRES:

(a) "CWPP" MEANS A COMMUNITY WILDFIRE PROTECTION PLAN AS

AUTHORIZED AND DEFINED IN SECTION 101 OF TITLE I OF THE FEDERAL "HEALTHY FORESTS RESTORATION ACT OF 2003", PUBL. L. 108-148.

(b) "FIRE HAZARD AREA" MEANS AN AREA MAPPED BY THE COLORADO STATE FOREST SERVICE, IDENTIFIED IN SECTION 23-31-302, AS FACING A SUBSTANTIAL AND RECURRING RISK OF EXPOSURE TO SEVERE FIRE HAZARDS.

(3) NOT LATER THAN NOVEMBER 15, 2009, THE STATE FORESTER, IN COLLABORATION WITH REPRESENTATIVES OF THE UNITED STATES FOREST SERVICE, THE COLORADO DEPARTMENT OF NATURAL RESOURCES, COUNTY GOVERNMENTS, MUNICIPAL GOVERNMENTS, LOCAL FIRE DEPARTMENTS OR FIRE PROTECTION DISTRICTS, ELECTRIC, GAS, AND WATER UTILITY PROVIDERS IN THE SUBJECT AREA, AND STATE AND LOCAL LAW ENFORCEMENT AGENCIES, SHALL ESTABLISH GUIDELINES AND CRITERIA FOR COUNTIES TO CONSIDER IN PREPARING THEIR OWN CWPPs TO ADDRESS WILDFIRES IN FIRE HAZARD AREAS WITHIN THE UNINCORPORATED PORTION OF THE COUNTY.

(4) THE ADOPTION OF A CWPP BY A COUNTY GOVERNMENT SHALL BE GOVERNED BY THE REQUIREMENTS OF SECTION 30-15-401.7, C.R.S.

(5) THE STATE FORESTER SHALL SEND TIMELY NOTICE OF THE GUIDELINES AND CRITERIA ESTABLISHED PURSUANT TO SUBSECTION (3) OF THIS SECTION TO THE DEPARTMENT OF LOCAL AFFAIRS AND TO STATEWIDE ORGANIZATIONS REPRESENTING COLORADO COUNTIES AND MUNICIPALITIES AND SHALL POST SUCH INFORMATION ON THE WEB SITE OF THE COLORADO STATE FOREST SERVICE.

(6) NOTHING IN THIS SECTION SHALL BE CONSTRUED TO AFFECT THE PROVISIONS OF SECTION 23-31-309 OR THE WILDFIRE PREPAREDNESS PLAN DEVELOPED PURSUANT TO SUCH SECTION.

**SECTION 2.** Part 4 of article 15 of title 30, Colorado Revised Statutes, is amended BY THE ADDITION OF A NEW SECTION to read:

**30-15-401.7. Determination of fire hazard area - community wildfire preparedness plans - adoption - legislative declaration - definitions.** (1) (a) THE GENERAL ASSEMBLY HEREBY FINDS, DETERMINES, AND DECLARES THAT:



(I) COMMUNITY WILDFIRE PROTECTION PLANS, OR CWPPs, ARE AUTHORIZED AND DEFINED IN SECTION 101 OF TITLE I OF THE FEDERAL "HEALTHY FORESTS RESTORATION ACT OF 2003", Pub.L. 108-148, REFERRED TO IN THIS SECTION AS "HFRA". TITLE I OF HFRA AUTHORIZES THE SECRETARIES OF AGRICULTURE AND THE INTERIOR TO EXPEDITE THE DEVELOPMENT AND IMPLEMENTATION OF HAZARDOUS FUEL REDUCTION PROJECTS ON FEDERAL LANDS MANAGED BY THE UNITED STATES FOREST SERVICE AND THE BUREAU OF LAND MANAGEMENT WHEN THESE AGENCIES MEET CERTAIN CONDITIONS. HFRA EMPHASIZES THE NEED FOR FEDERAL AGENCIES TO WORK COLLABORATIVELY WITH LOCAL COMMUNITIES IN DEVELOPING HAZARDOUS FUEL REDUCTION PROJECTS, PLACING PRIORITY ON TREATMENT AREAS IDENTIFIED BY THE LOCAL COMMUNITIES THEMSELVES IN A CWPP. THE WILD LAND-URBAN INTERFACE AREA IS ONE OF THE IDENTIFIED PROPERTY AREAS THAT QUALIFY UNDER HFRA FOR THE USE OF THIS EXPEDITED ENVIRONMENTAL REVIEW PROCESS.

(II) THE DEVELOPMENT OF A CWPP CAN ASSIST A LOCAL COMMUNITY IN CLARIFYING AND REFINING ITS PRIORITIES FOR THE PROTECTION OF LIFE, PROPERTY, AND CRITICAL INFRASTRUCTURE IN ITS WILD LAND-URBAN INTERFACE AREA. THE CWPP BRINGS TOGETHER DIVERSE FEDERAL, STATE, AND LOCAL INTERESTS TO DISCUSS THEIR MUTUAL CONCERNS FOR PUBLIC SAFETY, COMMUNITY SUSTAINABILITY, AND NATURAL RESOURCES. THE CWPP PROCESS OFFERS A POSITIVE, SOLUTION-ORIENTED ENVIRONMENT IN WHICH TO ADDRESS CHALLENGES SUCH AS LOCAL FIRE-FIGHTING CAPABILITY, THE NEED FOR DEFENSIBLE SPACE AROUND HOMES AND HOUSING DEVELOPMENTS, AND WHERE AND HOW TO PRIORITIZE LAND MANAGEMENT ON BOTH FEDERAL AND NONFEDERAL LANDS. CWPPs CAN BE AS SIMPLE OR COMPLEX AS A LOCAL COMMUNITY DESIRES.

(III) THE ADOPTION OF A CWPP BRINGS MANY BENEFITS TO THE STATE AND ADOPTING LOCAL COMMUNITY, INCLUDING:

(A) THE OPPORTUNITY TO ESTABLISH A LOCALLY APPROPRIATE DEFINITION AND BOUNDARY FOR THE WILD LAND-URBAN INTERFACE AREA;

(B) THE OPPORTUNITY TO STUDY THE EFFECT OF FIRE RATINGS AND COMBUSTIBILITY STANDARDS FOR BUILDING MATERIALS USED IN WILD LAND-URBAN INTERFACE AREAS;

(C) THE ESTABLISHMENT OF RELATIONS WITH OTHER STATE AND

LOCAL GOVERNMENT OFFICIALS, LOCAL FIRE CHIEFS, STATE AND NATIONAL FIRE ORGANIZATIONS, FEDERAL LAND MANAGEMENT AGENCIES, PRIVATE HOMEOWNERS, ELECTRIC, GAS, AND WATER UTILITY PROVIDERS IN THE SUBJECT AREA, AND COMMUNITY GROUPS, THEREBY ENSURING COLLABORATION AMONG THESE GROUPS IN INITIATING A PLANNING DIALOGUE AND FACILITATING THE IMPLEMENTATION OF PRIORITY ACTIONS ACROSS OWNERSHIP BOUNDARIES;

(D) SPECIALIZED NATURAL RESOURCE KNOWLEDGE AND TECHNICAL EXPERTISE RELATIVE TO THE PLANNING PROCESS, PARTICULARLY IN THE AREAS OF GLOBAL POSITIONING SYSTEMS AND MAPPING, VEGETATION MANAGEMENT, ASSESSMENT OF VALUES AND RISKS, AND FUNDING STRATEGIES; AND

(E) STATEWIDE LEADERSHIP IN DEVELOPING AND MAINTAINING A LIST OR MAP OF COMMUNITIES AT RISK WITHIN THE STATE AND FACILITATING WORK AMONG FEDERAL AND LOCAL PARTNERS TO ESTABLISH PRIORITIES FOR ACTION.

(IV) CWPPs GIVE PRIORITY TO PROJECTS THAT PROVIDE FOR THE PROTECTION OF AT-RISK COMMUNITIES OR WATERSHEDS OR THAT IMPLEMENT RECOMMENDATIONS IN THE CWPP.

(V) CWPPs ASSIST LOCAL COMMUNITIES IN INFLUENCING WHERE AND HOW FEDERAL AGENCIES IMPLEMENT FUEL REDUCTION PROJECTS ON FEDERAL LANDS, HOW ADDITIONAL FEDERAL FUNDS MAY BE DISTRIBUTED FOR PROJECTS ON NONFEDERAL LANDS, AND IN DETERMINING THE TYPES AND METHODS OF TREATMENT THAT, IF COMPLETED, WOULD REDUCE THE RISK TO THE COMMUNITY.

(VI) THE DEVELOPMENT OF CWPPs PROMOTES ECONOMIC OPPORTUNITIES IN RURAL COMMUNITIES.

(b) BY ENACTING THIS SECTION, THE GENERAL ASSEMBLY INTENDS TO FACILITATE AND ENCOURAGE THE DEVELOPMENT OF CWPPs IN COUNTIES WITH FIRE HAZARD AREAS IN THEIR TERRITORIAL BOUNDARIES AND TO PROVIDE MORE STATEWIDE UNIFORMITY AND CONSISTENCY WITH RESPECT TO THE CONTENT OF CWPPs IN COUNTIES NEEDING PROTECTION AGAINST WILDFIRES.

(2) AS USED IN THIS SECTION, UNLESS THE CONTEXT OTHERWISE REQUIRES:

(a) "CWPP" MEANS A COMMUNITY WILDFIRE PROTECTION PLAN AS AUTHORIZED AND DEFINED IN SECTION 101 OF TITLE I OF THE FEDERAL "HEALTHY FORESTS RESTORATION ACT OF 2003", PUBL. L. 108-148.

(b) "FIRE HAZARD AREA" MEANS AN AREA MAPPED BY THE COLORADO STATE FOREST SERVICE, IDENTIFIED IN SECTION 23-31-302, C.R.S., AS FACING A SUBSTANTIAL AND RECURRING RISK OF EXPOSURE TO SEVERE FIRE HAZARDS.

(3) (a) NOT LATER THAN JANUARY 1, 2011, THE BOARD OF COUNTY COMMISSIONERS OF EACH COUNTY, WITH THE ASSISTANCE OF THE STATE FORESTER, SHALL DETERMINE WHETHER THERE ARE FIRE HAZARD AREAS WITHIN THE UNINCORPORATED PORTION OF THE COUNTY.

(b) NOT LATER THAN ONE HUNDRED EIGHTY DAYS AFTER DETERMINING THERE ARE FIRE HAZARD AREAS WITHIN THE UNINCORPORATED PORTION OF A COUNTY, THE BOARD OF COUNTY COMMISSIONERS, IN COLLABORATION WITH THE REPRESENTATIVES OF THE ORGANIZATIONS OR ENTITIES ENUMERATED IN SECTION 23-31-312 (3), C.R.S., THAT ESTABLISHED THE GUIDELINES AND CRITERIA, SHALL PREPARE A CWPP FOR THE PURPOSE OF ADDRESSING WILDFIRES IN FIRE HAZARD AREAS WITHIN THE UNINCORPORATED PORTION OF THE COUNTY. IN PREPARING THE CWPP, THE BOARD SHALL CONSIDER THE GUIDELINES AND CRITERIA ESTABLISHED BY THE STATE FORESTER AND SUCH REPRESENTATIVES PURSUANT TO SECTION 23-31-312 (3), C.R.S.

(c) NOTWITHSTANDING ANY OTHER PROVISION OF THIS SECTION, A COUNTY THAT HAS ALREADY PREPARED A CWPP OR AN EQUIVALENT PLAN AS OF THE EFFECTIVE DATE OF THIS SECTION AND, IN CONNECTION WITH SUCH PREPARATION, CONSIDERED THE GUIDELINES AND CRITERIA ESTABLISHED BY THE STATE FORESTER AND DESIGNATED REPRESENTATIVES PURSUANT TO SECTION 23-31-312 (3), C.R.S., SHALL NOT BE REQUIRED TO PREPARE A NEW CWPP TO SATISFY THE REQUIREMENTS OF THIS SECTION.

**SECTION 3.** 23-31-309, Colorado Revised Statutes, is amended BY THE ADDITION OF A NEW SUBSECTION to read:

**23-31-309. Wildfire emergency response fund - creation - wildfire preparedness fund - creation.** (6) PROCEDURES GOVERNING THE DEVELOPMENT, ADOPTION, OR IMPLEMENTATION OF COMMUNITY WILDFIRE PROTECTION PLANS BY COUNTY GOVERNMENTS ARE SPECIFIED IN SECTION 30-15-401.7, C.R.S. NOTHING IN THIS SECTION SHALL BE CONSTRUED TO AFFECT THE PROVISIONS OF SECTION 30-15-401.7, C.R.S.

**SECTION 4.** 30-10-512, Colorado Revised Statutes, is amended to read:

**30-10-512. Sheriff to act as fire warden.** SUBJECT TO THE PROVISIONS OF THE COMMUNITY WILDFIRE PROTECTION PLAN PREPARED BY THE COUNTY IN ACCORDANCE WITH SECTION 30-15-401.7, the sheriff of every county, in addition to other duties, shall act as fire warden of his OR HER respective county in case of prairie or forest fires OR WILDFIRES.

**SECTION 5.** 30-10-513, Colorado Revised Statutes, is amended to read:

**30-10-513. Sheriff in charge of forest or prairie fire or wildfire - expenses.** SUBJECT TO THE PROVISIONS OF THE COMMUNITY WILDFIRE PROTECTION PLAN PREPARED BY THE COUNTY IN ACCORDANCE WITH SECTION 30-15-401.7, it is the duty of the sheriff, undersheriffs, and deputies, in case of any forest or prairie fire OR WILDFIRE OCCURRING IN THE UNINCORPORATED AREA OF THE COUNTY, to assume charge thereof or to assist other governmental authorities in such emergencies for controlling or extinguishing such fires, and, for assisting in so doing, they may call to their aid such person as they may deem necessary. The state forester may assume the duty with concurrence of the sheriff. The board of county commissioners of any county may allow the sheriff, undersheriffs, deputies, municipal or county fire departments, fire protection districts, fire authorities, and such other persons as may be called to assist in controlling or extinguishing such fires such compensation and other expenses necessarily incurred as it may deem just. The board of county commissioners of any county in this state may make such appropriation as it may deem proper for the purpose of controlling fires in its county. The board of county commissioners is authorized to levy a special tax subject to approval of the voters upon every dollar of valuation of assessment of the taxable property within the county for the purpose of creating a fund that shall be appropriated, after consultation with representatives of fire

departments, fire protection districts, and fire authorities in the county, to prevent, control, or extinguish such fires anywhere in the county and to fix the rate of levy; except that the amount raised from the levy in any one year is limited to the amount raised by one mill or five hundred thousand dollars, whichever is less.

**SECTION 6.** 32-1-1002 (3) (a), Colorado Revised Statutes, is amended to read:

**32-1-1002. Fire protection districts - additional powers and duties.** (3) (a) The chief of the fire department in each fire protection district in the state of Colorado, by virtue of such office so held by him or her, shall have authority over the supervision of all fires within the district, except as otherwise provided by law, subject to the duties and obligations imposed by this subsection (3) AND SUBJECT TO THE PROVISIONS OF THE COMMUNITY WILDFIRE PROTECTION PLAN PREPARED BY THE COUNTY IN ACCORDANCE WITH SECTION 30-15-401.7, C.R.S., and shall be vested with such other express authority as is contained in this subsection (3), including commanding the fire department of such district.

**SECTION 7. Act subject to petition - effective date.** This act shall take effect at 12:01 a.m. on the day following the expiration of the ninety-day period after final adjournment of the general assembly that is allowed for submitting a referendum petition pursuant to article V, section 1 (3) of the state constitution, (August 4, 2009, if adjournment sine die is on May 6, 2009); except that, if a referendum petition is filed against this act or an item, section, or part of this act within such period, then the act, item,

section, or part, if approved by the people, shall take effect on the date of the official declaration of the vote thereon by proclamation of the governor.

\_\_\_\_\_  
Peter C. Groff  
PRESIDENT OF  
THE SENATE

\_\_\_\_\_  
Terrance D. Carroll  
SPEAKER OF THE HOUSE  
OF REPRESENTATIVES

\_\_\_\_\_  
Karen Goldman  
SECRETARY OF  
THE SENATE

\_\_\_\_\_  
Marilyn Eddins  
CHIEF CLERK OF THE HOUSE  
OF REPRESENTATIVES

APPROVED \_\_\_\_\_

\_\_\_\_\_  
Bill Ritter, Jr.  
GOVERNOR OF THE STATE OF COLORADO

**Routt County Road Clearing Analysis**

**Date: 9 September 2010**

## Table of Contents

OBJECTIVE .....	1
APPROACH .....	1
RESULTS .....	2
DISCUSSION .....	9

## List of Figures

FIGURE 1: FLOWCHART OF ANALYSIS COMPLETED .....	1
FIGURE 2: ROAD-CLEARING ANALYSIS MAP .....	2

## List of Tables

TABLE 1: ROAD SECTIONS WITH MILEAGE .....	3
---	---



## Objective

The purpose of this analysis is to provide information about the amount of coniferous trees along roads for Senator Michael Bennet. Routt County has analyzed county roads, public roads, and private/city roads using the best available data at this time.

## Approach

The data used for this analysis includes Colorado GAP vegetation data and Routt County's Road Centerline data. Colorado GAP vegetation data is the best vegetation data available for non-federal lands in Routt County. Primary coniferous vegetation in the GAP data was used to determine which roads need clearing in Routt County (Refer to Figure 1). Routt County analyzed county, public, and private/city roads within our jurisdiction for this project.



Figure 1: Flowchart of Analysis Completed



Table 1: Road Sections with Mileage

ROAD _ NAME	ROADTYPE	Miles
County Road 1	County Road	0.297
County Road 18	County Road	1.392
County Road 129	County Road	2.919
County Road 129	County Road	0.128
County Road 129	County Road	2.554
County Road 129	County Road	0.525
County Road 129	County Road	0.252
County Road 13	County Road	0.590
County Road 132	County Road	3.277
County Road 132A	County Road	0.643
County Road 13A	County Road	0.033
County Road 14	County Road	0.590
County Road 15	County Road	0.786
County Road 16	County Road	4.220
County Road 2	County Road	2.105
County Road 2	County Road	0.461
County Road 200	County Road	0.216
County Road 200A	County Road	0.896
County Road 209	County Road	1.165
County Road 209	County Road	0.350
County Road 209	County Road	0.364
County Road 209	County Road	0.699
County Road 212	County Road	0.290
County Road 212	County Road	1.236
County Road 24	County Road	1.193
County Road 25	County Road	0.768
County Road 27	County Road	1.668
County Road 29	County Road	5.605
County Road 3	County Road	3.959
County Road 3	County Road	1.630
County Road 32	County Road	0.834
County Road 36	County Road	0.641
County Road 370	County Road	3.076
County Road 38	County Road	0.139
County Road 38A	County Road	0.123
County Road 3A	County Road	3.260
County Road 3B	County Road	1.915

County Road 3C	County Road	3.046
County Road 4	County Road	3.506
County Road 41	County Road	1.215
County Road 432	County Road	0.932
County Road 46	County Road	2.031
County Road 4A	County Road	0.649
County Road 4A	County Road	0.417
County Road 52	County Road	3.499
County Road 52	County Road	2.716
County Road 52W	County Road	0.035
County Road 55	County Road	1.900
County Road 56	County Road	0.444
County Road 56	County Road	1.894
County Road 56A	County Road	1.361
County Road 56A	County Road	1.676
County Road 56C	County Road	0.610
County Road 62	County Road	1.693
County Road 62	County Road	0.195
County Road 62	County Road	0.184
County Road 62	County Road	0.744
County Road 62	County Road	0.505
County Road 64	County Road	0.759
County Road 64	County Road	0.691
County Road 67	County Road	1.271
County Road 67A	County Road	3.187
County Road 7	County Road	1.152
County Road 80	County Road	0.884
County Road 80	County Road	0.523
County Road 82	County Road	1.948
County Road R13	County Road	0.291
Agate Creek Road	Private	0.131
Aspen Hollow Lane	Private	0.901
Aspen Ridge Road	Private	0.659
Aspen Ridge Road	Private	0.757
Aspen Way	Private	0.945
Bear Paw Trail	Private	1.917
Beaver Creek Trail	Private	1.451
Beaver Dam Road	Private	0.537
Big Aspen Drive	Private	0.215
Big Aspen Drive	Private	0.107
Big Aspen Drive	Private	1.176

Big Aspen Drive	Private	0.363
Big Elk Drive	Private	0.787
Big Sky Point	Private	0.100
Blue Grouse Lane	Private	0.227
Blue Valley Lane	Private	1.239
Bradley Ranch	Private	0.321
Buck Mountain Lane	Private	1.564
Button Willow Drive	Private	0.483
Country Green Road	Private	0.690
Deer Lane	Private	0.271
Double Buck Trail	Private	0.125
Echo Valley Lane	Private	0.250
El Dorado Drive	Private	0.368
Flood Creek Road	Private	0.556
Game Trails Drive	Private	0.850
Gooseberry Lane	Private	0.200
Green Ridge Court	Private	0.336
Green Ridge Drive	Private	1.466
Grouse Creek Park Road	Private	0.409
Gunn Creek Lane	Private	0.569
Henderson Park Road	Private	0.476
Henderson Park Road West Branch	Private	0.689
Hibbert Lane	Private	0.800
Hidden Mesa Drive	Private	1.171
Highlands Road	Private	0.600
Hinton Lane	Private	0.144
Huckleberry Lane	Private	0.397
Hummingbird Way	Private	0.058
Hurd View Lane	Private	0.417
Juniper Park Trail	Private	0.411
Juniper Springs Court	Private	0.257
Katy Court	Private	0.830
Kelsie Court	Private	0.474
Lindley Lane	Private	0.358
Lone Eagle Circle	Private	0.200
Lone Eagle Circle	Private	1.510
Lone Tooth Trail	Private	0.385
Los Ranchos Road	Private	0.110
Lynx Basin Lane	Private	0.627
Meadow Creek Drive	Private	0.268
Meadow Loop	Private	0.110

Meadow Road	Private	0.465
Meadowbrook Drive	Private	0.484
Mill Creek Road	Private	0.477
Moose Track Lane	Private	0.823
Morningstar Lane	Private	0.462
Mountain Meadows Court	Private	0.543
Mountain Meadows Drive	Private	0.923
Mountain Top Drive	Private	0.628
North Long Ridge Roa	Private	0.717
Old Stage Trail	Private	0.927
Paradise Valley Lane	Private	0.555
Pearl Lake Campground Loop	Private	0.085
Pinon Crest Way	Private	0.298
Placer Place	Private	0.144
Ponderosa Trail	Private	0.246
Prickly Pear Court	Private	0.203
Quaker Mountain Circle North	Private	1.241
Quarry Ridge	Private	0.136
Red Dirt Lane	Private	1.015
Redman Turnoff	Private	0.009
Ridge Run Trail	Private	0.235
Rockledge Road	Private	0.137
Rockledge Road	Private	0.765
Servis Berry Lane	Private	0.064
Semotan Drive	Private	0.876
Silverado Road	Private	2.812
Sky Valley Lodge	Private	0.400
Skyline Drive	Private	0.775
Smith Creek Park Road	Private	0.903
Soda Creek Lane	Private	0.034
Soda Crk Rim Road	Private	0.335
Star Ridge Road	Private	0.699
Storm Canyon Trail	Private	0.439
Strawberry Lane	Private	0.089
Sunrise Vista	Private	0.562
Table Rock Road	Private	2.599
Tatanka Trail	Private	0.250
Thorpe Mountain Drive	Private	2.713
Timber Ridge Road	Private	0.993
Timbers Preserve Drive North	Private	0.199
Timbers Preserve Drive South	Private	0.263

Timbers Ridge Way	Private	0.811
Trailhead Lane	Private	1.683
Trouville Court	Private	0.024
Unknown	Private	0.300
Upper Huckleberry Lane	Private	0.206
Valley View Drive	Private	0.031
Vista Verde	Private	1.023
Wapiti Way	Private	0.205
Wentlake Drive	Private	0.454
Wiley Way	Private	0.525
Willow Creek Road	Private	0.028
Yellow Jacket Lane	Private	0.103
Zousiyama Lane	Private	0.397
	Private	1.561
	Private	0.088
	Private	0.130
	Private	0.199
Alpine Drive	Public	0.085
Bear Trail	Public	0.783
Beaver Canyon Drive	Public	0.192
Bighip Way	Public	0.053
Broken Talon Trail	Public	0.213
Broken Talon Way	Public	0.040
Buck Horn Place	Public	0.019
Bucking Way	Public	0.077
Cayuga Way	Public	0.086
Cheyenne Trail	Public	0.499
Chief Joseph	Public	0.055
Chinch Trail	Public	0.088
Clara Way	Public	0.101
Colt Trail	Public	0.830
Comanche Road	Public	0.211
Crow's Nest Drive	Public	0.280
Cutter Trail	Public	0.051
Deenclover Lane	Public	0.139
Diana Place	Public	0.200
Elk Lane	Public	0.138
Elk Park Trail	Public	0.260
Fallen Falcon Trail	Public	0.503
Filly Trail	Public	0.598
Filly Trail	Public	0.300

Golden Tide Place	Public	0.473
Halter Trail	Public	0.312
Hame Trail	Public	0.083
Hill Street	Public	0.198
Hoch Eye Way	Public	0.483
Hopes Place	Public	0.087
Jupiter Place	Public	0.326
Kickapoo Way	Public	0.222
Kikahat Way	Public	0.063
Lariat Trail	Public	0.066
Leeward Lane	Public	0.153
Linda Kay Place	Public	0.092
Little Bear Trail	Public	0.153
Longfellow Lane	Public	0.449
Morgan Way	Public	0.037
Neptune Place	Public	0.192
Neptune Place	Public	0.134
Oglala Way	Public	0.068
Pima Way	Public	0.503
Polly Court	Public	0.046
Prarie Schooner Trail	Public	0.138
Pueblo Drive	Public	0.595
Pueblo Way	Public	0.065
Ramuda Trail	Public	0.698
Red Cloud Way	Public	0.042
Rein Way	Public	0.053
Roan Way	Public	0.044
Roan Way	Public	0.035
Rock Point Trail	Public	0.304
Saturn Court	Public	0.174
Seneca Trail	Public	0.385
Shay Way	Public	0.578
Silver Bits Trail	Public	0.139
Single Tree Wy	Public	0.038
Snowbird Trail	Public	0.206
Snowbird Way	Public	0.116
Stagecoach Townhomes	Public	0.648
Stallion Way	Public	0.042
Stampede Way	Public	0.090
Stirrup Way	Public	0.054
Sunbird Way	Public	0.040



Surrey Trail	Public	0.134
Tangle Way	Public	0.326
Teton Way	Public	0.063
Tewa Way	Public	0.108
Tree Haus Drive	Public	1.078
Ute Trail	Public	0.482
West Wind Place	Public	0.084
Whistle Tree Trail	Public	0.055
Whitewood Drive	Public	1.433
Willow Gulch Road	Public	0.140
Winatchi Trail	Public	0.146
	Public	0.235
Anthony's Circle	Steamboat	0.307
Aspen Wood Drive	Steamboat	0.234
Aspen Wood Lane	Steamboat	0.022
Black Bear Lane	Steamboat	0.048
Blackmer Drive	Steamboat	1.061
Burgess Creek Road	Steamboat	0.485
Clearwater Trail	Steamboat	0.278
Forest View Drive	Steamboat	0.093
Golf Stream Court	Steamboat	0.049
Golf View Way	Steamboat	0.139
Heavenly View	Steamboat	0.515
Inverness Way	Steamboat	0.066
Meadowbrook Circle	Steamboat	0.507
Santa Fe Trail	Steamboat	0.095
Steamboat Boulevard	Steamboat	0.093
Stoneridge Drive	Steamboat	0.072
Whitewater Lane	Steamboat	0.152
Danver Trail		0.110
Harrison Trail		0.419
Lone Pine Trail		0.300
Monson Trail		0.218
Mustang Way		0.079
Thoroughbred Trail		0.167

## Discussion

This analysis has been completed using the best information available. The request from Senator Bennet asked for dead trees. Data is not available for dead trees on non-federal lands in Routt County. As an alternative, coniferous vegetation stands were used for this analysis.

Routt County's road centerline data does not include right-of-ways. After discussing this with the road and bridge department it was determined that 30 feet from the centerline is a good average to use for right-of-ways.

The results of this analysis show significant portions of roads that may need clearing. In Routt County, county roads make up the largest portion of roads in coniferous forests. City and private roads aren't far behind county roads. Public roads make up a small portion of the total 180 miles of roads in coniferous forests.

## 2010 Wildfire Data Update

A data committee consisting of Mark Cahur (Routt Zone FMO), Rob Bringuel (Routt Zone Fuels Supervisor), Nicolai Bencke (Hahns Peak/Bears Ears Ranger District GIS Analyst), and Emy Parmley (Routt County GIS) elected to utilize the wildfire risk data previously developed in 2005 to update the Routt County Wildfire Risk Map for the new Routt County-wide Community Wildfire Protection Plan. Please see the attached document for how the 2005 data was developed and how it was adjusted to portray the most recent mountain pine beetle mortality in the lodgepole pine vegetative component.

The 2005 wildfire risk data was categorized into eight categories based on fuel types and aspects. The committee decided to re-categorize this data into three groups in order for the categories to be more discernable and useable on the map. The four "High" categories were grouped into one single "High" category, the two "Moderate" categories were also grouped into just one "Moderate" category, and the "No Hazard" and "Low" categories were not adjusted.

The most significant change in the wildfire hazards for Routt County since 2005 is the mountain pine beetle epidemic. This epidemic has killed thousands of acres of lodgepole pine stands in Routt County adding a new dynamic to the fuels risk. The committee decided to show the lodgepole pine stands as a separate category to emphasize this risk. This data was derived from the GAP vegetation data. Primary stands of lodgepole pine are shown in red.

## Wildfire Data Creation Process

USFS and County wildfire data were merged, and edgematched – when data overlapped USFS data was used – this data was more current and deemed to be more accurate

### USFS Data (for original data analysis see usfwildfiremetadata.pdf)

1. Wildfire data received from USFS – UTM zone 13
2. Data re-projected to State Plane NAD 83
3. The extent of the County wildfire needed to fill in gaps in USFS data determined by unioning USFS data and county boundary and extracting that area missing data. County wildfire data would then be clipped to this extent

### Routt County Data

1. Data digitized from wildfire mylars (see figure 1) by Premier Data Services



Figure 1

2. Data clipped to the extent of County areas missing USFS data (see step 3 above)
3. Slope and aspect information derived from County wide DEM
  - o Queried for slopes greater than 30% using map calculator (made sure results were in percent and not degrees using map calculator formula [your grid.slope(1,true)])
  - o Queried for aspects of S or SW
  - o Unioned slope and aspect coverages, merged adjacent polygons
4. Created County wildfire coverage including slopes > 30% and/or S/SW aspects
  - o Unioned slope and aspect coverage with the wildfire coverage
5. Increased hazard classes if slope or aspect fields populated
  - o Low Hazard \* Moderate
  - o Moderate Hazard \* High

## Merged County and USFS Wildfire data

1. County and USFS data merged and border areas were edgematched. Discrepancies evaluated using aerial photo interpretation (Kent Foster FMO – USFS)
2. Any polygon < .25 acres were eliminated
3. A visual analysis (and trial and error) of the remaining polygons lead to the following eliminations/groupings of polygons.
  - o Low Hazard and < 10 acres eliminated
  - o Moderate/low and < 2.5 acres eliminated
  - o High/low and < 1 acre eliminatedThese eliminations generalized data without changing hazard areas and provided a more workable polygon coverage. Please note - only Low Hazard areas and areas whose hazards were increased by a high slope or S/SW aspect were included in these eliminations.
4. Attribute fields were edited to match USFS Wildfire Hazard classes
5. Draft wildfire maps were presented to Fire District Chiefs and the USFS for edits
6. Edits were completed and Wildfire Hazard map was adopted by the Wildland Fire Council on April 10, 2002

## Attribute Information

Hazclass is the data field that contains the Hazard information

No Hazard – Most likely a river, waterbody or large rock outcropping

Low – Low Fire Hazard

\*Moderate – Moderate Fire Hazard

\*Moderate/low – Moderate Fire Hazard increased from low due to slope and/or aspect

\*\*High – High Fire Hazard

\*\*High – High Fire Hazard - Timber

\*\*High/low – High Fire Hazard - Shrub

\*\*High/low – High Fire Hazard increased from moderate due to slope and/or aspect

\*Combined together

\*\*Combined together



## References/Resources

---

- *Healthy Forest Restoration Act of 2003*
- *Preparing a Community Wildfire Protection Plan, A Handbook for Wildland-Urban Interface Communities*, March 2004; Communities Committee, National Association of Counties, National Association of State Foresters, Society of American Foresters, Western Governors' Association
- *Community Wildfire Protection Plans-Guidelines for Implementation*, Colorado State Forest Service, August 2005
- *Routt County Fire Management Plan*, 2003
- *Routt County Annual Fire Operating Plan*, 2010